

GOLD BOXES

金盒

Hong Kong 25 November 2018

香港 2018 年 11 月 25 日



CHRISTIE'S 佳士得



GOLD BOXES

金盒

SUNDAY 25 NOVEMBER 2018 • 2018年11月25日 (星期日)

AUCTION CODE AND NUMBER

拍賣名稱及編號

In sending Written and Telephone bids or making enquiries, this sale should be referred to as **SAXONY-17441**
在遞交書面和電話競投表格或查詢拍賣詳情時，請註明拍賣名稱及編號為**SAXONY-17441**。

CONDITIONS OF SALE · BUYING AT CHRISTIE'S 業務規定 · 買方須知

This auction is subject to Important Notices, Conditions of Sale · Buying at Christie's and to reserves. [250]
此次拍賣受重要通知，業務規定 · 買方須知及底價所管限。[250]

ENQUIRIES · 查詢

HK 香港：+852 2760 1766
UK 英國：+44 (0)20 7627 2707
US 美國：+1 212 703 8080

AUCTION · 拍賣

Sunday 25 November · 11月25日 (星期日)
4.00pm (Lots 3701-3775) · 下午4.00 (拍賣品編號3701-3775)
Location: Grand Hall, Hong Kong Convention and Exhibition Centre,
No.1 Expo Drive, Wanchai, Hong Kong
地點：香港灣仔博覽道1號香港會議展覽中心大會堂
Tel 電話：+852 2760 1766 · Fax 傳真：+852 2760 1767

VIEWING · 預展

HONG KONG, Hong Kong Convention and Exhibition Centre

香港，香港會議展覽中心

Friday, 23 November · 11月23日 (星期五)
10.30am – 8.00pm
Saturday, 24 November · 11月24日 (星期六)
10.30am – 6.30pm
Sunday, 25 November · 11月25日 (星期日)
10.30am – 4.00pm

HIGHLIGHTS PREVIEW · 精選拍品預展

LONDON, Christie's London

倫敦，佳士得倫敦辦事處

Friday – Thursday, 19 – 25 October · 10月19至25日 (星期五至四)

GENEVA, Four Seasons Hotel Des Bergues

日內瓦，日內瓦四季酒店

Friday – Tuesday, 9 – 13 November · 11月9至13日 (星期五至二)

AUCTIONEER · 拍賣官

Tash Perrin

Please note that descriptions of Lots in this catalogue do not include references to conditions. Condition reports are available on request – please refer to the Important Notices at the back of the catalogue for further information.

敬請注意本拍賣目錄中沒有包括拍品狀況說明，若有需要，請向佳士得公司索取，本公司可以提供此報告。另外，敬請留意閱讀拍賣目錄背頁之《重要通告及目錄編列方法之說明》。

We may convert and display in our catalogues the HK\$ **estimates** in US\$. This is for the convenience of our clients only and is not binding in any way. The rate of exchange is fixed at the latest practical date prior to the printing of the catalogue and may change by the time of the sale. 我們可將港元估價轉換成美元並於目錄中顯示。這僅為方便我們的客戶而不具有任何法律約束力。該貨幣兌換率是根據最貼近日目錄印時的兌換率設定，所以可能與拍賣當日兌換率有差別。

Scan to view auctions details
掃描以瀏覽拍賣詳情



Christie's Hong Kong Autumn Auctions Microsite
佳士得香港秋季拍賣網站

CHRISTIE'S  LIVE
Bid live in Christie's salerooms worldwide

christies.com

CHRISTIE'S 佳士得



SPECIALISTS AND SERVICES FOR THIS AUCTION

SPECIALISTS



DAVID MCLACHLAN
Head of Gold Boxes
dmclachlan@christies.com
+44 (0)20 7389 2650



ISABELLE CARTIER-STONE
Specialist, Silver & Gold Boxes
icartier-stone@christies.com
+44 (0)20 7389 2898



NGAIO HITTI
Sale Coordinator
nhitti@christies.com
+44 (0)20 7752 3208



SERVICES

WRITTEN AND TELEPHONE BIDS & CHRISTIE'S LIVE

Tel: +852 2978 9910
Email: bidsasia@christies.com

PADDLE REGISTRATION

Tel: +852 2760 1766
Email: registrationasia@christies.com

AUCTION RESULTS

HK: +852 2760 1766
UK: +44 (0)20 7627 2707
US: +1 212 703 8080
Internet: www.christies.com

CATALOGUES ONLINE

Lotfinder®
Internet: www.christies.com

CLIENT SERVICES

Tel: +852 2760 1766
Email: infoasia@christies.com

POST-SALE SERVICES

Tel: +852 2760 1766
Email: postsaleasia@christies.com

www.christies.com

EMAIL

For general enquiries about this auction, emails should be addressed to the Sale Co-ordinator(s).



△ 3701

A LOUIS XV-STYLE ENAMELLED GOLD ÉTUI

19TH CENTURY, STRUCK WITH MARKS RESEMBLING THE MAKER'S MARK OF NOEL HARDIVILLIERS, THE PARISIAN DATE LETTER FOR 1768/1769 AND THE CHARGE MARK OF JEAN-JACQUES PREVOST 1762-1768

slightly tapering *étui-à-cire* of oval section, the cover and base set with translucent green enamel fluting between chased *sablé* gold foliate borders, with opaque white enamel and green enamel beading, the slightly domed cover with chased gold flowerhead within green enamel petal surround, blank matrix 4¾ in. (121 mm.) high

HK\$32,000-55,000

US\$4,200-7,100
£3,200-5,400

PROVENANCE:

Collection of Madame de Polés, Paris. Sold at Galerie Georges Petit, Paris, 22 June 1927, lot 65.

LITERATURE:

The Magic of the Silversmith's Trade, European Silver in Private Collections from 1500 to 1850, Museum voor Sierkunst en Vormgeving, Antwerp, 2000, no. 323, p. 210.

路易十五風格琺瑯黃金筒匣

十九世紀，印有類似NOEL HARDIVILLIERS的工匠標記及巴黎日期字樣



△ 3702

A GERMAN JEWELLED ENAMELLED GOLD SNUFF-BOX

PROBABLY HANAU, CIRCA 1840

rectangular box with rounded corners, the cover later applied with an oval blue lapis-lazuli plaque set with the cypher for Alexander II (1818-1881), Tsar of Russia 1855-1881, within a chased gold frame, the cover, sides and base with *taille-d'épagne* blue enamel scrolls and white enamel borders on a matted gold ground 2¾ in. (68 mm.) wide

HK\$85,000-130,000

US\$11,000-17,000
£8,400-13,000

Alexander II (1818-1881) was the Emperor of Russia from 1855 until his assassination in 1881. He was also the King of Poland and the Grand Duke of Finland. Alexander's most significant reform as emperor was the emancipation of Russia's serfs in 1861, for which he is known as Alexander the Liberator.

嵌有珠寶的德國皇室琺瑯黃金鼻煙盒

可能約1840年製於哈瑙



3703

A GERMAN ENAMELLED GOLD SNUFF-BOX

HANAU, CIRCA 1820, THE ENAMEL PLAQUE ATTRIBUTED TO JOHANN DANIEL BERNÉAUD (GERMAN, 1773-1861), SIGNED 'B. PX'

rectangular box with rounded corners, the sides and base set with *sablé* gold panels within opaque sky-blue enamel fillets with scrolling foliage parcel-enamelled in opaque dark-blue, the cover centred with an enamel plaque depicting the Madonna and Child within slightly raised chased vari-colour gold floral and foliate *sablé* border, the base and side pilasters with similar raised foliage, the later interior lining engraved with an inscription

3½ in. (88 mm.) wide

The inscription reads 'Jose Maria Fornel, / a su Ilustre amigo y Benefactor / El Gral. Santa Anna. / 1853'

HK\$220,000-320,000

US\$29,000-41,000
£22,000-32,000

Johann Daniel Bernéaud was born in Hanau and worked as an enamellist there and in Geneva. At some time, he was associated with Antoine Carteret. Both are praised in Goethe's '*Tour on the Rhine, Main, and Neckar*' of 1814-1815 in his chapter on Hanau: 'Painting in enamel is executed chiefly by Carteret and Bernéaud, and both may justly claim the title of artists.'

德國琺瑯黃金鼻煙盒

約1820年製於哈瑙，琺瑯飾板由JOHANN DANIEL BERNÉAUD (德國, 1773-1861) 製，簽名[B. PX]



3704

A GEORGE II GOLD AND HARDSTONE SNUFF-BOX
LONDON, CIRCA 1740/1750

cartouche-shaped box, the cover and base set with shaped panels of smoky honey-coloured quartz mounted *à jour* within reeded gold frames, the *sablé* borders of the cover and the sides finely chased with hunting hounds in pursuit of ducks and rabbits within foliage, slightly raised scroll foliate thumbpiece

2¾ in. (60 mm.) wide
HK\$32,000-55,000

US\$4,200-7,100
£3,200-5,400

喬治二世黃金及半寶石鼻煙盒
約1740/1750年製於倫敦



3705

A GERMAN GOLD SNUFF-BOX
POSSIBLY HANAU, CIRCA 1890, STRUCK WITH THE STANDARD GERMAN
POST-1888 MARK FOR FOURTEEN CARAT GOLD

rectangular cartouche-shaped box with baluster sides, the cover, sides and base of polished gold, chased and engraved with scrolling foliage within chevron borders, with applied scroll and *rocaille* thumbpiece

3¼ in. (82 mm.) wide
3¼ oz. (96 gr.)

HK\$65,000-85,000

US\$8,400-11,000
£6,500-8,400

德國黃金鼻煙盒
可能約1890年製於哈瑙，印有德國1888年後14K金標準金標



3706

A SWISS ENAMELLED GOLD SNUFF-BOX

BY GUIDON, RÉMOND, GIDE & CO. (FL. 1792-1801), MARKED, GENEVA, CIRCA 1800,
STRUCK WITH INVENTORY NUMBER 17K90, THE VIENNA TAX MARK FOR 1806-1807
AND THE IMPORT MARK FOR THE FORMER AUSTRO-HUNGARIAN EMPIRE 1868-1872

rectangular box with rounded corners, the sides and base set with panels of translucent mauve enamel
on a *moire*-pattern engine-turned ground, within white enamel frames and sky-blue *taille d'épargne* gold
foliate borders and pilasters, the cover centred with a shaped rectangular enamel plaque depicting a
harbour scene, with fishermen in the foreground, a ruined temple and a fountain to one side and a sailing
ship beyond

3 $\frac{5}{8}$ in. (93 mm.) wide

HK\$260,000-380,000

US\$34,000-49,000
£26,000-37,000

Guidon, Rémond, Gide & Co., had worked under that name from 1794 until January 1801, before
reforming as Rémond, Lami & Co..

瑞士琺瑯黃金鼻煙盒

GUIDON, RÉMOND, GIDE & CO. (活躍於1792-1801) 製, 附有標記, 約1800年製於日內瓦, 印有存貨
號碼17K90, 附有維也納1806至1807年間使用的稅印, 以及前奧匈帝國1868至1872年間使用的進口印



3707

A PAIR OF CONTINENTAL ENAMELLED GOLD PILL-BOXES

EACH 20TH CENTURY AND STAMPED 750

each shaped rectangular, the sides and base set with panels of engine-turning with enamel highlights, the covers set with panels of translucent red and green enamel on engine-turned star-burst grounds within chased gold borders

each 1½ in. (35 mm.) wide

(2)

HK\$22,000-32,000

US\$2,900-4,100

£2,200-3,200

歐陸珐瑯黃金藥盒一對

各製於二十世紀，附有750壓印



3708

A GERMAN GOLD-MOUNTED HARDSTONE CARD-CASE

POSSIBLY FROM IDAR-OBERSTEIN, CIRCA 1915, WITH TWO VIENNESE POST-1925 IMPORT MARKS FOR FOURTEEN CARAT GOLD

rectangular box with rounded corners, the cover and base set with panels of nephrite within polished gold mounts, ruby-mounted pinch clasp

3 in. (75 mm.) wide

HK\$32,000-55,000

US\$4,200-7,100

£3,200-5,400

德國鑲金半寶石卡片盒

可能約1915年製於伊達爾-奧伯施泰因，附有兩枚維也納1925年後14K金進口印





THE PROPERTY OF A LADY

3709

A SWISS ENAMELLED MUSICAL GOLD SCENT-BOTTLE

BY PIGUET & CAPT (FL. 1802-1811), MARKED, GENEVA, CIRCA 1805,
THE MOVEMENT SIGNED 'PIGUET & CAPT, GENEVE, 123',
THE CASE WITH MAKER'S MARK G D

baluster-shaped flask, the obverse with an oval medallion painted with a polychrome enamel vase of colourful flowers, the reverse with a musical trophy heightened with black and white enamel against an opaque sky-blue enamel ground, each side with panels of translucent red enamel on an engine-turned ground, the upper portion further set with translucent dark-blue enamel on an engine-turned ground and with a flower laden cornucopia below a quiver and arrow, the reverse similarly enamelled and with a basket of flowers, the sides engraved with a running band of foliage heightened with *champlevé* sky-blue and black enamel, threaded gold stopper, pinned barrel musical movement comprising six teeth divided between the top and bottom, music regulated by a governor, the music released by means of a lever below the front panel, with replacement key
3 3/8 in. (80 mm.) high

HK\$320,000-550,000

US\$42,000-71,000
£32,000-54,000

Made for the Chinese export market, it had long been a tradition to send objects to China in pairs, so it is highly likely that the present example is the pair to the musical scent-bottle that was sold Sotheby's, Geneva, 15 May 2011, lot 124. It too was signed '*Piguet & Capt a Geneve*' with the inventory number '124'. On this example the colours of the enamel have been inverted and the enamel on the reverse is apple-green. According to Alfred Chapuis, *Le Miroir de la Séduction, Musée Patek Philippe, Geneva, 2010*, pp. 28, "the Chinese love symmetry; all gifts to a superior, and above all the Emperor, were given in pairs." It seems certain that many pairs of Chinese Market watches and boxes were split up as a result of looting by the British and French during the raid on the Summer palace in Peking in 1860. Isaac Daniel Piguet (1775-1841) and Henri Capt (1773-1837) were partners from 1802 until 1811 in the firm bearing their name, Piguet & Capt. The pair are considered amongst the most important makers of small objects that incorporated music, automata and watches working in Geneva at the end of the 18th and beginning of the 19th centuries.

瑞士琺瑯黃金音樂香水瓶

PIGUET & CAPT (活躍於1802-1811)製, 附有標記, 約1805年製於日內瓦, 機芯附有簽名「PIGUET & CAPT, GENEVE, 123」, 外殼印有G D工匠標記



3710

A GERMAN ENAMELLED GOLD SNUFF-BOX
HANAU, CIRCA 1820

rectangular box of *sablé* gold with rounded corners, the cover applied with slightly raised scrolling gold foliage, the sides and base set with panels of geometric patterned engine-turning and set at intervals with turquoise coloured enamel beads and scrolling foliage with polished gold and dark-blue enamel borders, the cover set with a rectangular enamelled plaque depicting the Madonna and Child within a dark-blue enamel frame
3½ in. (90 mm.) wide

HK\$190,000-220,000

US\$25,000-28,000
£19,000-22,000

德國琺瑯黃金鼻煙盒
可能約1820年製於哈瑙





3711

A GERMAN JEWELLED ENAMELLED GOLD SNUFF-BOX

MAKER'S MARK M P CROWNED, HANAU, CIRCA 1785, STRUCK WITH TWO FRENCH POST-1838 RESTRICTED WARRANTY MARKS FOR GOLD

oval box, the cover, sides and base set with panels of translucent dark-blue enamel on an engine-turned ground, set at intervals with *taille d'épargne* gold stars and within gold and white enamel frames, with opalescent pearl enamel bead and green enamel foliate *sablé* borders set at intervals with diamonds, green enamel column pilasters, the cover centred with an oval enamel plaque depicting an altar to love within a diamond-set silver frame
2¾ in. (70 mm.) wide

HK\$260,000-380,000

US\$34,000-49,000
£26,000-37,000

嵌有珠寶的德國珐瑯黃金鼻煙盒

印有M P CROWNED的工匠標記，約1785年製於哈瑙，附有兩枚法國1838年後限制保證金標



3712

A LOUIS XVI ENAMELLED GOLD SNUFF-BOX

MAKER'S MARK INDISTINCT, PARIS, 1788/1789, WITH THE SECOND CHARGE AND DECHARGE MARKS OF HENRI CLAVEL 1782-1789, STRUCK WITH TWO FRENCH POST-1838 RESTRICTED WARRANTY MARKS FOR GOLD

narrow rectangular box with canted corners, the cover, sides and base set with panels of translucent dark-blue enamel on an engine-turned ground with gold and sky-blue *taille d'épargne* foliate and chevron frames, within chased translucent red berry and green enamel foliate *sablé* borders, the cover with gold *taille d'épargne* motto 'Souvenir D'amitie', the base with a gold *taille d'épargne* floral vase with trailing foliage
3¾ in. (95 mm.) wide

HK\$160,000-220,000

US\$21,000-28,000
£16,000-22,000

路易十六珐瑯黃金鼻煙盒

工匠標記難以辨認，約1788/1789年製於巴黎，附有HENRI CLAVEL 1782至1789年間使用的第二生產與流通金標，印有兩枚法國1838年後限制保證金標



3713

A GERMAN GOLD-MOUNTED HARDSTONE SNUFF-BOX

PROBABLY HANAU, CIRCA 1860

rectangular box, the cover, sides and base set with panels of rock-crystal carved with floral sprays within scrolling borders and mounted *à jour* within reeded gold mounts, slightly raised scroll thumbpiece 2¾ in. (70 mm.) wide

HK\$22,000–32,000

US\$2,900–4,100
£2,200–3,200

德國鑲金半寶石鼻煙盒
可能約1860年製於哈瑙



3714

A GERMAN GOLD SNUFF-BOX

MAKER'S MARK INDISTINCT, PROBABLY HANAU, CIRCA 1790

oval box, the cover, sides and base set with panels of horizontal reeded engine-turning and chased overall with musical trophies amidst trailing foliage and flowerheads, later raised thumbpiece engraved with initials 2¾ in. (70 mm.) wide 3 oz. (90 gr.)

HK\$42,000–65,000

US\$5,400–8,300
£4,200–6,400

德國黃金鼻煙盒
工匠標記難以辨認，可能約1790年製於哈瑙



3715

A GERMAN ENAMELED GOLD SNUFF-BOX

MAKER'S MARK MC CROWNED, HANAU, CIRCA 1840, WITH INVENTORY NUMBER 113

oval box, the cover, sides and base set with panels of translucent dark-blue enamel on an engine-turned diaper-work ground, each with chased gold trophies amidst trailing flowers and foliage, within scrolling chased gold borders and side pilasters
3 $\frac{3}{8}$ in. (85 mm.) wide

HK\$320,000-550,000

*US\$42,000-71,000
£32,000-54,000*

德國珐瑯黃金鼻煙盒

印有MC CROWNED的工匠標記，約1840年製於哈瑙，印有存貨號碼113





3716

A LOUIS XV ENAMELLED GOLD SNUFF-BOX

BY CHARLES BRISSON (FL. 1761-1793), MARKED, PARIS, 1763/1764, WITH THE CHARGE AND DECHARGE MARKS OF JEAN-JACQUES PREVOST 1762-1768, STRUCK WITH TWO FRENCH POST-1838 RESTRICTED WARRANTY MARKS FOR GOLD

rectangular box with rounded ends, the cover, sides and base set with panels of translucent salmon-pink enamel on an engine-turned ground, within translucent green *taille d'épargne* enamel chevron and chased *entrelac* and husk borders

3¼ in. (82 mm.) wide

HK\$110,000-160,000

US\$15,000-21,000

£11,000-16,000

路易十五琺瑯黃金鼻煙盒

CHARLES BRISSON (活躍於1761-1793) 製，附有標記，1763/1764年製於巴黎，印有JEAN-JACQUES PREVOST 1762至1768年間使用的生產與流通金標，印有兩枚法國1838年後限制保證金標



3717

A GERMAN ENAMELLED GOLD SNUFF-BOX

MAKER'S MARK F J CROWNED, HANAU, CIRCA 1780, STRUCK WITH THE HANAU TOWN MARK FOR NINETEEN CARAT GOLD

oval box, the cover, sides and base set with panels of translucent purple enamel on an engine-turned ground stamped at intervals with pellets, within raised foliate and rope-twist gold borders set with trailing green enamel foliage and opalescent white enamel beads, the cover set with an enamel miniature depicting an altar to love

3½ in. (80 mm.) wide

HK\$220,000-320,000

US\$29,000-41,000

£22,000-32,000

The initials F J cannot so far be matched to any known Hanau goldsmith. The crowned letter R mark appears to imitate the Parisian year date letter. The three marks of the present box correspond exactly to those on a box in the Louvre illustrated in S. Grandjean, *Catalogue des tabatières, boîtes et étuis des XVIIIe et XIXe siècles du musée du Louvre*, Paris, 1981, no. 554.

德國琺瑯黃金鼻煙盒

印有F J CROWNED的工匠標記，約1780年製於哈瑙，印有19K金哈瑙市金標

3718

A LOUIS XV GOLD AND LACQUER SNUFF-BOX
MAKER'S MARK INDISTINCT, PARIS, 1760/1761,
WITH THE CHARGE AND DECHARGE MARKS OF
ELOY BRICHARD 1756-1762

circular gold-lined box of gold-coloured lacquer with wavy flange and pierced foliate thumbpiece, the cover, sides and base with panels of lacquer decorated with *chinoiserie* scenes within chevron borders, the cover with a fisherman seated on a riverbank fishing for carp, with hills, a prunus tree and a pagoda beyond, the sides with crane birds amidst trees and foliage, the base centred with a rosette
2 in. (50 mm.) diameter

HK\$85,000-130,000

US\$11,000-17,000
£8,400-13,000

路易十五黃金及光漆鼻煙盒

工匠標記難以辨認，約1760/1761年製於巴黎，印有ELOY BRICHARD 1756至1762年間使用的生產與流通金標







3719

A FRENCH GOLD-MOUNTED WOOD AND LACQUER SNUFF-BOX

BY ADRIEN-JEAN-MAXIMILIEN VACHETTE, (FL. 1779-1839), MARKED, PARIS, 1789,
WITH THE DECHARGE MARK OF FRANÇOIS KALENDRIN 1789-1792

oval box of gold-lined thuya wood, the cover and base with Japanese lacquer decorated in coloured *takamakie* and *hiramakie* with pagodas and pine trees on rock covered hillsides, the sides set at intervals with gold-mounted mother-of-pearl ovolos
3½ in. (80 mm.) wide

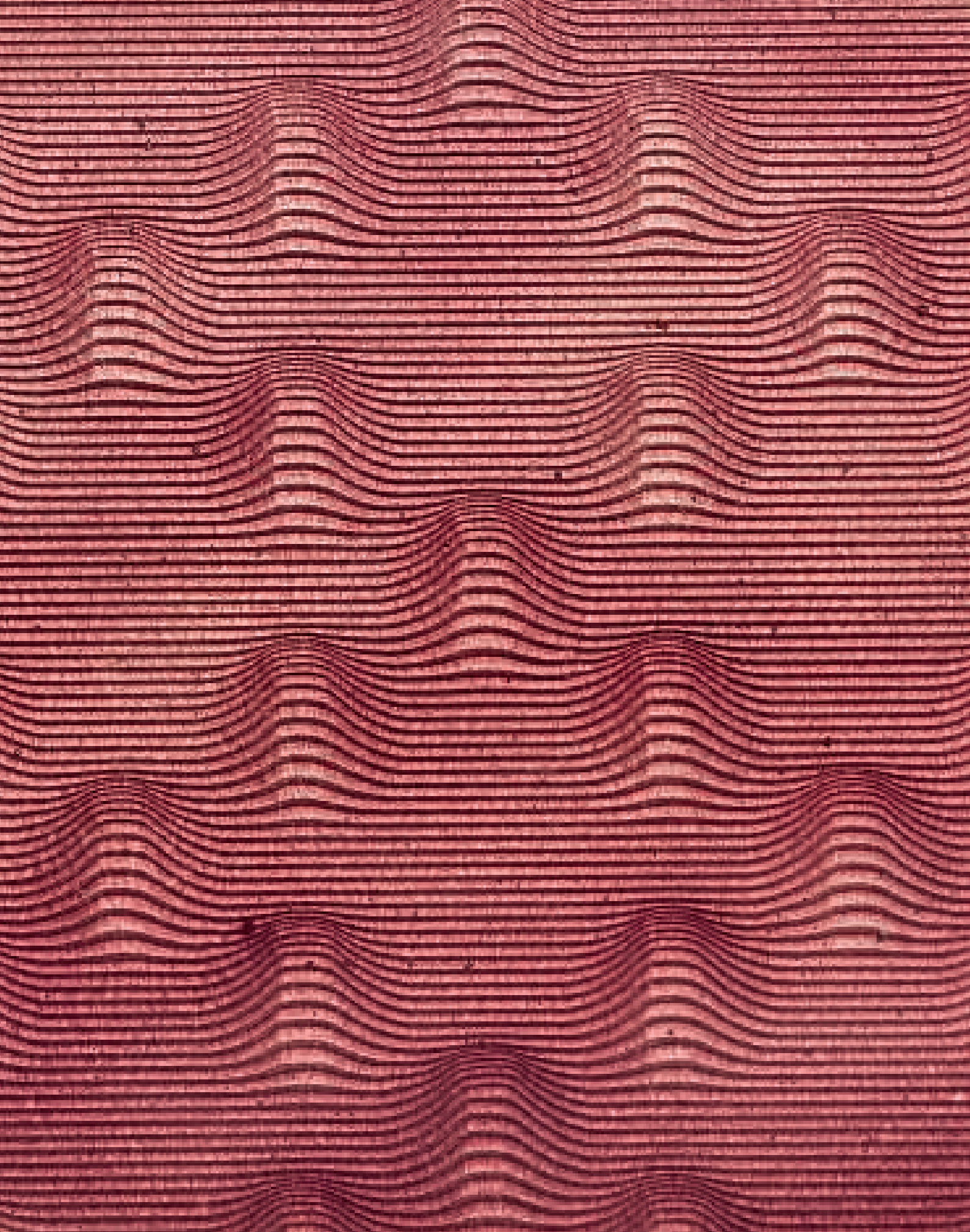
HK\$320,000-550,000

US\$42,000-71,000
£32,000-54,000

One of the best-known of the Parisian gold box makers at the turn of the 18th to the 19th century, Vachette struck his mark in 1779 and later worked together with Nitot, one of the court jewellers of Emperor Napoleon I. Henry Nocq (*Le poinçon de Paris*, Paris, 1968, [reprint], p. 76), praises Vachette: 'Avant et après la Révolution les plus belles tabatières d'or sont marquées du poinçon de Vachette.'

法國鑲金木及光漆鼻煙盒

ADRIEN-JEAN-MAXIMILIEN VACHETTE (活躍於1779-1839) 製, 附有標記, 1789年製於巴黎, 印有 FRANÇOIS KALENDRIN 1789至1792年間使用的流通金標





3720

A GERMAN JEWELLED ENAMELLED VARI-COLOUR GOLD SNUFF-BOX

HANAU, CIRCA 1780, STRUCK WITH THE HANAU TOWN MARK FOR EIGHTEEN CARAT GOLD AND TWO FRENCH POST-1838 RESTRICTED WARRANTY MARKS FOR GOLD, THE MINIATURE BY JEAN-PIERRE HUAUT (SWISS, 1655-1723) AND AMY HUAUT (SWISS, 1657-1724)

oval box, the cover, sides and base set with panels of translucent purple enamel on an engine-turned ground in lilac enamel frames, within chased vari-colour gold foliate and vine borders and side pilasters, the cover set with an enamel portrait miniature, on copper, of a gentleman, within a silver diamond-set frame with a gold *taille d'épargne* vine and leaf border

3½ in. (80 mm.) wide

HK\$260,000-380,000

US\$34,000-49,000
£26,000-37,000

嵌有珠寶的德國琺瑯變色黃金鼻煙盒

約1780年製於哈瑙，印有18K金哈瑙市金標及兩枚法國1838年後限制保證金標，袖珍肖像畫由JEAN-PIERRE HUAUT (瑞士, 1655-1723)及AMY HUAUT (瑞士, 1657-1724)製



3721

AN AUSTRIAN ENAMELLED GOLD SNUFF-BOX

PROBABLY VIENNA, CIRCA 1880

cartouche-shaped box with lobed corners, the sides and base of polished gold with bright-cut chased foliage and scrolls, the cover set with an enamel miniature of a street scene of Vienna within a dark-blue enamel frame and *taille d'épargne* white enamel chevron border
3½ in. (80 mm.) wide

HK\$85,000-130,000

US\$11,000-17,000
£8,400-13,000

奧地利磁瑯黃金鼻煙盒
可能約1880年製於維也納



3722

AN AUSTRIAN GOLD SNUFF-BOX

PROBABLY VIENNA, CIRCA 1900, STAMPED WITH INVENTORY NUMBER 3600 / 2

rectangular box with canted corners, the sides and base set with panels of peak-pattern engine-turning with polished gold sides, the cover set with an enameled *grisaille* plaque depicting ladies taking tea, within a chased foliate border
3½ in. (90 mm.) wide

HK\$32,000-55,000

US\$4,200-7,100
£3,200-5,400

奧地利黃金鼻煙盒
可能約1900年製於維也納，印有存貨號碼3600 / 2





3723

A GERMAN GOLD-MOUNTED HARDSTONE TABLE SNUFF-BOX
PROBABLY BERLIN OR DRESDEN, CIRCA 1840

oval box of smoky grey agate, the cover and sides overlaid with cast gold cagework, boldly chased with classical figures depicting on the cover the Triumph of Venus, her triumphal chariot drawn by two doves, the sides with military trophies and scrolling foliage within classical vases, with applied *rocaille* thumbpiece
4¾ in. (120 mm.) wide

HK\$260,000-380,000

US\$34,000-49,000
£26,000-37,000

德國鑲金半寶石大型鼻煙盒
可能約1840年製於柏林或德累斯頓



3724

A LOUIS XV GOLD SNUFF-BOX

MAKER'S MARK INDISTINCT, PARIS, 1769/1770,
WITH THE CHARGE AND DECHARGE MARKS OF JULIEN ALATERRE
1768-1774

rectangular box, the cover, sides and base set with panels of *moire*-pattern
engine-turning within chased fluted borders
3 1/8 in. (80 mm.) wide
4 oz. (114 gr.)

HK\$65,000-85,000

US\$8,400-11,000
£6,500-8,400

路易十五黃金鼻煙盒

工匠標記難以辨認，約1769/1770年製於巴黎，印有JULIEN ALATERRE 1768至
1774年間使用的生產與流通金標



3725

A SWISS ENAMELLED GOLD SNUFF-BOX

GENEVA, CIRCA 1820

rectangular box with rounded ends and waisted sides, the cover, sides and
base set with panels of translucent red enamel on an engine-turned ground,
the cover panel with a brightly coloured enamel floral spray, the outer borders
and sides with opaque apple-green *taille d'épargne* enamel with red and
white enamel and gold flowers and foliage, with red, pink and sky-blue enamel
scrolls and polished gold borders
3 3/4 in. (95 mm.) wide

HK\$190,000-240,000

US\$25,000-31,000
£19,000-24,000

瑞士琺瑯黃金鼻煙盒

約1820年製於日內瓦





3726

**A LOUIS XVI DOUBLE-OPENING ENAMELLED VARI-COLOUR GOLD
BOÎTE-À-MOUCHES**

BY CHARLES LE BASTIER (FL. 1754-1783), MARKED, PARIS, 1776/1777, STAMPED 870,
WITH THE CHARGE AND DECHARGE MARKS OF JEAN-BAPTISTE FOUACHE 1774-1780

rectangular box, the cover, sides and hinged base set with panels of translucent gold enamel painted with brown winter branches *en camaïeu* on an engine-turned ground, with translucent red berry enamel and foliate *sablé* borders and white enamel frames, the cover set with a mirror, the interior fitted with an oblong similarly enamelled hinged compartment and a gold-handled brush, the hinged base with a shallow compartment for patches and set with a mirror
2 in. (50 mm.) wide

HK\$220,000-320,000

US\$29,000-41,000
£22,000-32,000

Charles Le Bastier was renowned for his lavish boxes and was one of the principal goldsmiths of both the Louis XV and Louis XVI periods. For another box by this goldsmith see lot 3767.

路易十六雙開式琺瑯變色黃金假痣盒

CHARLES LE BASTIER (活躍於1754-1783) 製，附有標記，可能約1776/1777年製於巴黎，附有870
壓印，印有JEAN-BAPTISTE FOUACHE 1774至1780年間使用的生產與流通金標

**THE PROPERTY OF A GENTLEMAN
LOTS 3727-3733**



3727

A SWISS JEWELLED ENAMELLED GOLD SNUFF-BOX

GENEVA, CIRCA 1820

navette-shaped box, the cover and base set with panels of translucent dark-blue enamel on an engine-turned ground, with gold *taille d'épargne* vases and green enamel foliage and colourful enamel flowers set at intervals with pearls and precious stones, the sides and outer *sablé* gold borders with slightly raised trailing green enamel foliage set with pearls and precious stones, the cover centred with an oval enamel plaque depicting an altar of love
3½ in. (80 mm.) wide

HK\$32,000-55,000

US\$4,200-7,100

£3,200-5,400

3728

A SWISS ENAMELLED GOLD SNUFF-BOX

GENEVA, CIRCA 1830

oval box with fluted rims, the sides and base with radiating enamel floral panels within chased gold and white enamel frames, the cover centred with an opaque pink enamel cartouche painted with a colourful bouquet of flowers, within a sky-blue *taille d'épargne* foliate frame highlighted with red enamel flowers and berries and polished gold outer border, the base centred with a similar panel enamelled in sky-blue and painted with military trophies
3½ in. (90 mm.) wide

HK\$65,000-85,000

US\$8,400-11,000

£6,500-8,400

瑞士琺瑯黃金鼻煙盒

約1830年製於日內瓦

嵌有珠寶的瑞士琺瑯黃金鼻煙盒

約1820年製於日內瓦





3729

A SWISS JEWELLED MUSICAL GOLD TOOTH-PICK CASE
GENEVA, CIRCA 1820

rectangular box, the sides and base set with panels of wave-pattern engine-turning within chased gold borders, the slightly domed *sablé* cover boldly chased with flowers and foliage and set with a diamond-mounted turquoise cabochon flower and berries, the inside of the base fitted with a musical movement released by a lever on the front panel, with later key
2½ in. (63 mm.) wide

HK\$42,000-65,000

US\$5,400-8,300
£4,200-6,400

嵌有珠寶的瑞士黃金音樂牙籤盒
約1820年製於日內瓦

3730

A SWISS ENAMELLED GOLD SNUFF-BOX
GENEVA, CIRCA 1830

shaped-oval box, the cover centred by a wavy reserve enamelled *en plein* with a harbour scene depicting a sailing ship between two headlands, with a mosque and a city to the right and a fort to the left, the open sea beyond, within a wavy gold and opaque white enamel frame, with a broad opaque sky-blue enamelled band with *taille d'épargne* scrolling gold foliage and multicolour enamelled flowers and leaves, opaque mauve enamel border and plain gold mount, the sides and base centred by wavy reserves enamelled in translucent gold with bunches of flowers on engine-turned grounds, surrounded by an opaque sky-blue *taille d'épargne* band chased with gold and enamelled foliage, wavy flange
3½ in. (88 mm.) wide

HK\$42,000-65,000

US\$5,400-8,300
£4,200-6,400

瑞士琺瑯黃金鼻煙盒
約1830年製於日內瓦



**THE PROPERTY OF A GENTLEMAN
LOTS 3727-3733**



3731

A GERMAN ENAMELLED GOLD SNUFF-BOX
BY FRÈRES JORDAN (FL. 1790-1820), MARKED,
HANAU, CIRCA 1800, THE FLANGE STAMPED
WITH INVENTORY NUMBER 4213,
LATER STAMPED WITH TWO FRENCH
IMPORT MARKS FOR GOLD 1864-1893

rectangular box with canted corners, the sides and base set with panels with alternating stripes of sky-blue and white enamel on a polished gold ground, the cover centred with an oval enamel miniature depicting a lady with a child seated on her lap and feeding a playful spaniel within a wooded landscape, with sky-blue and white enamel flower-heads and diaper-work surround

3¼ in. (82 mm.) wide

HK\$42,000-65,000

US\$5,400-8,300
£4,200-6,400

3732

A GERMAN ENAMELLED GOLD SNUFF-BOX
BY LES FRÈRES SOUCHAY, MARKED, HANAU,
CIRCA 1780, STRUCK WITH THE HANAU TOWN
MARK FOR NINETEEN CARAT GOLD

oval box, the cover, sides and base set with panels of translucent red enamel over a *moiré* pattern engine-turned ground within white enamel and gold bead frames, with outer *sablé* gold borders set with trailing gold flower-heads amidst translucent green enamel foliate borders, *sablé* vase pilasters, the cover centred with an oval enamel plaque depicting a classical scene

HK\$85,000-130,000

US\$11,000-17,000
£8,400-13,000

The brothers Esay (1723-1791) and Marc André Souchay (1730-1811) came from one of Hanau's Huguenot families of *bijouteries*, French speaking Huguenot jewellers who had been attracted to Hanau by the privileges and financial incentives extended by Prince Regent William (1682-1760), later Landgrave William VIII (1730-1760), to anyone who was willing to set up in business in Hanau. Within a very short period of time, Hanau developed into an important center for luxury goods with some thirty-two *bijoutiers* involved in the production of gold boxes. By the early 1770s Etienne Flamant, an expert *guillocheur* originally from Geneva, signed a contract with the leading Hanau goldsmiths for them to supply him with around 385 to 430 gold boxes for decoration every year. Les Frères Souchay agreed to supply him with 120 boxes, which gives some indication of the scale of gold box production in Hanau at this time.

德國琺瑯黃金鼻煙盒

FRÈRES JORDAN (活躍於1790-1820)製, 附有標記, 約1800年製於哈瑙, 盒邊壓印存貨號碼4213, 後來印上兩枚法國1864至1893年間使用的進口印





3733

A SWISS ENAMELLED GOLD SNUFF-BOX

GENEVA, CIRCA 1830, THE COVER ENAMEL BY JEAN-LOUIS RICHTER (1766-1841)

rectangular box with canted corners, the sides, base and interior of cover set with panels of translucent dark-blue enamel on an engine-turned ground and hung with gold swags and trellis-work stamped with gold flower-heads, within sky-blue enamel *taille d'épargne* scrolling borders set at intervals with translucent red enamel pellets, the cover set with an enamel plaque depicting a romantic couple beside a river, with cows and sheep in the foreground and a city with mountains beyond, signed lower left 'Richter', wavy flange with translucent red enamel border, in fitted red leather case
3 $\frac{3}{8}$ in. (86 mm.) wide

HK\$160,000-220,000

US\$21,000-28,000
£16,000-22,000

Jean-Louis Richter was born in Geneva in 1766 and learned his art from Etienne and Philippe-Samuel-Théodore Roux. He is perhaps the most well known and regarded of the early 19th century enamel painters who specialised in working on gold boxes. He is most renowned for his lakeside and alpine landscapes and is credited with developing the technique of using a translucent background over rayed engine-turning to create the impression of a sun-lit sky.

瑞士琺瑯黃金鼻煙盒

約1830年製於日內瓦，盒面琺瑯由JEAN-LOUIS RICHTER (1766-1841)製作





3734

A LOUIS XVI ENAMELLED GOLD SNUFF-BOX

BY JOSEPH-ETIENNE BLERZY (FL. 1768-1808), MARKED, PARIS, 1784/1785,
WITH THE SECOND CHARGE AND DECHARGE MARKS OF HENRI CLAVEL 1782-1789,
STRUCK WITH INVENTORY NUMBER 584 AND TWO FRENCH POST-1838
RESTRICTED WARRANTY MARKS FOR GOLD

oval box, the cover, sides and base set with panels of translucent dark-blue enamel on an engine-turned ground and set at intervals with *taille d'épargne* gold stars, between opalescent pearl enamel bead and green enamel foliate *sablé* borders, the pilasters set with purple *camaieu* roundels of winter branches, the cover set with an enamel plaque depicting Apollo
3½ in. (80 mm.) wide

HK\$320,000-550,000

US\$42,000-71,000
£32,000-54,000

Joseph-Etienne Blerzy was apprenticed in 1750 to Francois-Joachim Aubert and became a master in 1768. He was still working in 1806 but was not listed among active Parisian goldsmiths three years later. A prolific goldsmith, boxes made by him can be found in the Wallace Collection, The Gilbert Collection and the Louvre.

For another box by this goldsmith see lot 3752

路易十六琺瑯黃金鼻煙盒

JOSEPH-ETIENNE BLERZY (活躍於1768-1808), 附有標記, 約1784/1785年製於巴黎, 附有HENRI CLAVEL 1782至1789年間使用的第二生產與流通金標, 印有存貨號碼584, 以及兩枚法國1838年後限制保證金標

THE PROPERTY OF A GENTLEMAN
LOTS 3735 & 3736

3735

**A GEORGE II GOLD-MOUNTED HARDSTONE
SEALING-WAX CASE**

LONDON, CIRCA 1750/1760

cylindrical slightly tapering burnt-orange agate *étui* with independent convex top and base, the cover and base overlaid with pierced gold cagework stamped, engraved and chased with c-scrolls, birds and foliate swags, interspersed by reeded gold rims
4½ in. (115 mm.) high

HK\$32,000-55,000

US\$4,200-7,100
£3,200-5,400

喬治二世鑲金半寶石封蠟筒
約1750/1760年製於倫敦



3736

**A GERMAN JEWELLED VARI-COLOUR
GOLD-MOUNTED HARDSTONE
SNUFF-BOX**

THE BOX, MAKER'S MARK CROWNED - C O, HANAU, CIRCA 1780, WITH TWO FRENCH IMPORT MARKS AND MARKS RESEMBLING THE PARISIAN SECOND CHARGE AND DECHARGE MARKS OF HENRY CLAVEL, THE DECORATION ON THE EXTERIOR OF THE BOX CIRCA 1860

oval honey-coloured agate box with vari-colour foliate gold mounts, later applied with coloured gold, silver and mother-of-pearl forming architectural features, bridges, trees and waterfalls set with diamonds and coloured stones, applied silver-mounted diamond and emerald-set thumbpiece
3½ in. (90 mm.) wide

HK\$75,000-110,000

US\$9,700-14,000
£7,400-11,000

嵌有珠寶的德國變色鑲金半寶石鼻煙盒

盒身印有CROWNED - C O的工匠標記, 約1780年製於哈瑙, 附有兩枚法國進口印, 以及類似HENRY CLAVEL的巴黎第二生產與流通金標, 盒外裝飾約1860年製





PROPERTY FORMERLY IN THE COLLECTION OF
RICHARD STERN

3737

**A CONTINENTAL GOLD-MOUNTED
HARDSTONE SCENT-BOTTLE**

CIRCA 1880, STRUCK WITH TWO POST-1838
PARISIAN SMALL GUARANTEE MARKS
FOR GOLD

slightly tapering rock-crystal flask of rectangular
section, the panels mounted *à jour* within chased
gold cagework, independent gold stopper with
scroll finial, gold push-piece
3 $\frac{1}{8}$ in. (80 mm.) high

HK\$16,000-26,000

US\$2,100-3,300
£1,600-2,600

歐洲鑲金半寶石香水瓶

約1880年製，印有兩枚1838年後巴黎小型金標

THE PROPERTY OF A LADY
LOT 3738 - 3743

3738

A LOUIS XV GOLD-MOUNTED HARDSTONE SNUFF-BOX

MAKER'S MARK AC, MARKED, PARIS, 1737/1738, WITH THE CHARGE
AND DECHARGE MARKS OF HUBERT LOUVET 1732-1738

shaped as a casket, the honey-coloured agate panels mounted *à jour* within
reeded gold mounts, with raised scroll thumbpiece, *together with* a cartouche-
shaped striated mocha-coloured agate snuff-box with polished gold mounts
2 $\frac{7}{8}$ in. (68 mm.) and 2 $\frac{1}{2}$ in. (65 mm.) wide respectively (2)

HK\$22,000-32,000

US\$2,900-4,100
£2,200-3,200

路易十五鑲金半寶石鼻煙盒

印有AC工匠標記，附有標記，1737/1738年製於巴黎，印有HUBERT LOUVET
1732至1738年間使用的生產與流通金標，
小盒形，連橢圓形條紋淺棕色瑪瑙鼻煙盒



THE PROPERTY OF A LADY LOTS 3738-3743

3739

A GEORGE III VARI-COLOUR GOLD-MOUNTED HARDSTONE SNUFF-BOX

PROBABLY LONDON, CIRCA 1770

formed as a quince, the hinged reddish-brown agate body with chased
vari-colour gold foliate mounts and white gold rosette thumbpiece
1¾ in. (45 mm.) high

HK\$16,000-26,000

US\$2,100-3,300
£1,600-2,600

PROVENANCE:

Christie's, Geneva, 19 November 1980, lot 233.

喬治三世變色鑲金半寶石鼻煙盒

可能約1770年製於倫敦



3740

A GERMAN SILVER-GILT MOUNTED HARDSTONE BONBONNIÈRE

PROBABLY BERLIN, CIRCA 1760

circular box of cream-coloured cloudy agate,
the cover and sides applied with flowers, foliage
and insects in a variety of coloured hardstones,
including bloodstone, carnelian, sodalite and
turquoise
2¾ in. (73 mm.) diam.

HK\$42,000-65,000

US\$5,400-8,300
£4,200-6,400

PROVENANCE:

Christie's, Geneva, 14 May 1980, lot 500.

Two very similar boxes to the present example
are illustrated C. Le Corbeiller, *European and
American Snuff Boxes 1730-1830*, London, 1966,
nos. 460 and 462.

德國鑲銀半寶石糖果盒

可能約1760年製於柏林

3741

**A CONTINENTAL JEWELLED
HARDSTONE HAND-SEAL**

realistically carved as an owl from amethystine quartz, with cabochon emerald gold-mounted eyes, the matrix carved with the initial C below a crown
2 in. (53 mm.) high

HK\$22,000-32,000

*US\$2,900-4,100
£2,200-3,200*

嵌有珠寶的歐陸半寶石手印



3742

**A CONTINENTAL JEWELLED GOLD-
MOUNTED AMBER SCENT-BOTTLE**
CIRCA 1880-1910

gourd-shaped amber bottle, the cover applied with three gold elephants with ruby-set eyes, the polished gold finial set with a ruby cabochon
2¾ in. (70 mm.) high

HK\$22,000-32,000

*US\$2,900-4,100
£2,200-3,200*

PROVENANCE:

Christie's, Geneva, 13 May 1980, lot 185.

嵌有珠寶的歐陸鑲金琥珀香水瓶
約1880-1910年製

THE PROPERTY OF A LADY
LOTS 3738-3743



3743

A PAIR OF SWISS JEWELLED ENAMELLED GOLD ZARFS

GENEVA, CIRCA 1830

each of typical form with scalloped rim and spreading foot, the sides set with opaque green and pink enamelled plaques painted with flowerheads and foliage with floral diamond-set surrounds and columns, the base with similar floral enamel and applied with diamond-set motifs
each 2¼ in. (58 mm.) high

(2)

HK\$65,000-85,000

US\$8,400-11,000
£6,500-8,400

The serving of coffee in Turkey was a complex, ritualised process. It was served in small cups without handles, known as *fincan*, which were placed in holders known as *zarflar*. The word zarf comes from the Arabic word meaning container or envelope, and their purpose was to protect the cup from damage and also the fingers of the drinker from the hot liquid. Cups were typically made of porcelain, but also of glass and sometimes wood, few examples of which survive. However, because it was the zarf that was more visible, it was typically more elaborated and colourfully ornamented. Swiss boxes and objects, made in Geneva and destined for the markets in Turkey and beyond, were often brightly coloured and of unusual shape with scalloped edges, pierced bodies and set with jewels.

嵌有珠寶的瑞士琺瑯黃金杯托一對

約1830年製於日內瓦



THE PROPERTY OF A EUROPEAN GENTLEMAN

3744

A EUROPEAN JEWELLED ENAMELLED GOLD BROOCH

DUTCH OR FRENCH, CIRCA 1650, WITH LATER GOLD MOUNTS

formed as a recumbent spaniel wearing a gold collar, the body of opaque white enamel with coloured details, set with a single gold-mounted table-cut ruby and similarly mounted table-cut diamond border, later gold mount
7/8 in. (23 mm.) wide

We are grateful to the jewellery historian Diana Scarisbrick for confirming the dating of the enamel and suggesting it may have originally been the cover of a small box for aromatic substances.

HK\$42,000–65,000

*US\$5,400–8,300
£4,200–6,400*

嵌有珠寶的歐洲琺瑯黃金胸針

約1650年製，後來鑲上黃金

3745 NO LOT





3746

A GERMAN ENAMELLED VARI-COLOUR GOLD SNUFF-BOX

PROBABLY ESAIAS FERNAU & COMPAGNIE, MARKED, HANAU, CIRCA 1780,
STRUCK WITH THE HANAU TOWN MARK FOR NINETEEN CARAT GOLD AND
TWO FRENCH POST-1838 RESTRICTED WARRANTY MARKS FOR GOLD

oval box, the cover, sides and base set with panels of translucent orange enamel on an engine-turned ground with white enamel frames, within raised foliate vari-colour gold borders, the cover set with an enamel miniature depicting a gallant musician serenading two ladies in an arcadian landscape within a foliate gold frame
3 $\frac{3}{4}$ in. (85 mm.) wide

HK\$320,000–550,000

US\$42,000–71,000

£32,000–54,000

For a discussion on the Hanau goldsmith Esaias Fernau and an illustration of marks comparable to the present box, see L. Seelig, *Eighteenth century Hanau gold boxes*, Silver Society of Canada Journal 2015, pp. 47-48.

德國琺瑯變色黃金鼻煙盒

可能由ESAIAS FERNAU & COMPAGNIE製，附有標記，約1780年製於哈瑙，印有19K金哈瑙市金標及兩枚法國1838年後限制保證金標



(detail)

THE PROPERTY OF A GENTLEMAN

3747

A FRENCH GOLD MOUNTED AND ENAMEL SNUFF-BOX
 THE ENAMELS, BLOIS SCHOOL AND ORIGINALLY FROM A
 WATCH-CASE, CIRCA 1640, THE MOUNTS, PARIS, CIRCA 1740

circular box, with two re-mounted watchcases enamelled on both sides and
 depicting classical and rural scenes, set within later polished gold mounts
 2¾ in. (70 mm.) diam.

HK\$220,000-320,000

US\$29,000-41,000
 £22,000-32,000

This box is an interesting example of Parisian goldsmiths reacting to
 changing fashions and re-using earlier pieces to create new designs for
 snuff-boxes. There must have been a large number of watchcases that
 became available to goldsmiths when seventeenth century watches reached
 the end of their lives and which were then able to be put to a new use.

路易十五鑲金珐瑯鼻煙盒

盒身約1730年製於巴黎，珐瑯由BLOIS SCHOOL製作，源自一個錶殼，約
 1630年製





3748

**A SWISS JEWELLED ENAMELLED
MUSICAL GOLD NECESSAIRE SET WITH
A WATCH AND AN AUTOMATON**

GENEVA, CIRCA 1830

slightly tapering *étui* of rectangular section with canted corners, the obverse and reverse cover and base set with panels of translucent red enamel and black *taille d'épargne* enamel in a zig-zag pattern over an engine-turned ground, each centred by enamel plaques painted with scenes depicting Cupid amidst a colourful spray of flowers, a romantic couple seated in a wooded landscape, a family of doves and their nest, and an arrangement of fruit, the sides of the cover and base set with *taille d'épargne* enamelled panels depicting two serpents entwined around columns hung with flowers, with vases above, within sky-blue *taille d'épargne* enamel and seed-pearl borders, with gold push-piece, the fitted gold and enamel interior containing sky-blue and white *taille d'épargne* enamel gold implements, comprising a needle-case, a scent-bottle, a knife, a burin and a winding key, the hinged top of the cover inset with a glazed watch with two dials in white enamel, one for hours and minutes, the other for seconds, a winding square with a regulation screw to the right engraved A-R, the hinged base compartment concealing a gold and enamelled musical automaton, with a lady strumming a lyre and a seated cherub beating a drum in time to the music 3 $\frac{3}{8}$ in. (86 mm.) high

HK\$650,000-850,000 *US\$84,000-110,000*
£65,000-84,000

Although unmarked the present box is an exceptional example of the high quality of objects produced by the most eminent craftsmen in Geneva. The combination of music, automata, and time piece places this in the rarest class of boxes made in Geneva during the early years of the nineteenth century. These extraordinarily complex and beautifully decorated objects were much coveted by collectors in Europe and particularly in the Far East.

**嵌有珠寶的瑞士琺瑯黃金音樂工具盒連腕錶及
自動裝置**

約1830年製於日內瓦





3749

A SWISS ENAMELLED GOLD VINAIGRETTE

BY SENÉ & DETALLA (FL. C. 1795-1805), MARKED, GENEVA, CIRCA 1805

formed as an enameled butterfly, with translucent red enamel sides and base within white enamel frames and *taille d'épargne* black and white enamel chevron borders, inside a hinged scrolling foliate grille, suspended on a long gold chain with shaped *taille d'épargne* enameled floral links and matching ring

1½ in. (40 mm.) wide excluding chain

HK\$110,000-160,000

US\$15,000-21,000
£11,000-16,000

The partnership of the Geneva goldsmiths Philippe Sené and Détalla must have existed since sometime before 1795 but seems to have split up in 1805. By October 1805, Sené had gone into partnership with his brother-in-law Henry Neisser who had come to Geneva from Hanau in 1785/1786. Sené died in November 1807 and Neisser entered a mark on his own account in 1808.

瑞士琺瑯黃金香料瓶

SENÉ & DETALLA (活躍於約1795-1805) 製, 附有標記, 約1805年製於日內瓦



3750

A SWISS ENAMELLED GOLD TOOTH-PICK CASE

BY LOUIS GALOPIN, MARKED, GENEVA, CIRCA 1820

narrow rectangular box with rounded corners, the cover, sides and base set with panels of translucent red enamel on an engine-turned ground chased with scrolling foliage, within *taille d'épargne* dark blue enamel borders, the cover centred with a shaped enamel plaque depicting two putti in a garden

3½ in. (80 mm.) wide

HK\$42,000-65,000

US\$5,400-8,300
£4,200-6,400

瑞士琺瑯黃金牙籤盒

LOUIS GALOPIN製, 附有標記, 約1820年製於日內瓦



3751

**A LOUIS XV VARI-COLOUR GOLD-MOUNTED
HARDSTONE SNUFF-BOX**

BY LOUIS COUSIN (FL. 1766-1781), MARKED, PARIS, 1772/1773,
WITH THE CHARGE AND DECHARGE MARKS OF
JULIEN ALATERRE 1768-1774

oval box of rock-crystal, mounted *à jour* within chased and stamped
flowerhead, foliate and *entrelac* vari-colour gold mounts
2½ in. (55 mm.) wide

HK\$22,000–32,000

US\$2,900–4,100
£2,200–3,200

路易十五變色鑲金半寶石鼻煙盒

LOUIS COUSIN (活躍於1766–1781) 製，附有標記，約1772/1773年製於巴黎，印有JULIEN ALATERRE 1768至1774年間使用的生產與流通金標



3752

A LOUIS XVI ENAMELLED GOLD TOOTHPICK-CASE
BY JOSEPH ETIENNE BLERZY (FL. 1768-1808), MARKED,
PARIS, 1780/1781, WITH THE CHARGE AND DECHARGE
MARKS OF HENRI CLAVEL 1780-1782, THE FLANGE
ENGRAVED 'DU PETIT DUNKERKE', STRUCK WITH
INVENTORY NUMBER 974

rectangular narrow box with rounded ends, the cover, sides and
base set with panels of translucent lime-green enamel on an
engine-turned ground stamped at intervals with pellets, within
white enamel bead and chevron borders, the interior of the cover
set with a mirror
3¼ in. (80 mm.) wide

HK\$22,000–32,000

US\$2,900–4,100
£2,200–3,200

For another box by this goldsmith see lot 3734

路易十六琺瑯黃金牙籤盒

JOSEPH ETIENNE BLERZY (活躍於1768–1808) 製，附有標記，約1780/1781年製於巴黎，印有HENRI CLAVEL 1780至1782年間使用的生產與流通金標，盒邊刻有「DU PETIT DUNKERKE」，印有存貨號碼974

3753

**A LOUIS XVI VARI-COLOUR GOLD
AND HARDSTONE SNUFF-BOX**

MAKER'S MARK INCOMPLETE - C, PARIS, 1777/1778, WITH THE
CHARGE AND DECHARGE MARKS OF JEAN-BAPTISTE FOUACHE
1774-1780

oval box of rock-crystal, with chased vari-colour fruiting vines and *entrelac*
gold mounts
2½ in. (65 mm.) wide

HK\$32,000–55,000

US\$4,200–7,100
£3,200–5,400

路易十六變色黃金及半寶石鼻煙盒

印有不完整的-C工匠標記，約1777/1778年製於巴黎，印有JEAN-BAPTISTE FOUACHE 1774至1780年間使用的生產與流通金標





3754

A GERMAN GOLD AND PORCELAIN SNUFF-BOX

MAKER'S MARK F(-) CROWNED, HANAU, CIRCA 1780, STRUCK WITH THE HANAU TOWN MARK FOR EIGHTEEN CARAT GOLD AND A MARK RESEMBLING THE PARISIAN CHARGE MARK OF JULIEN ALATERRE, THE PORCELAIN PLAQUE, CONTINENTAL, CIRCA 1880

oval box, the sides and base set with panels of reeded engine-turning within chased gold mounts, the cover later set with a porcelain plaque depicting the story of Sampson and Delilah and overlaid with foliate gold mounts 2¾ in. (70 mm.) wide

HK\$32,000-55,000

US\$4,200-7,100
£3,200-5,400

Samson was a Nazirite, who was given immense strength to aid him against his enemies and allow him to perform superhuman feats including slaying a lion with his bare hands and massacring an entire army of Philistines using only the jawbone of a donkey. However, if Samson's long hair was cut, then his Nazirite vow would be violated and he would lose his strength. Samson was betrayed by his lover Delilah, who ordered a servant to cut his hair whilst he was sleeping and turned him over to his Philistine enemies who bound him and gouged out his eyes.

德國黃金及陶瓷鼻煙盒

印有F(-) CROWNED的工匠標記，約1780年製於哈瑙，印有18K金哈瑙市金標及類似JULIEN ALATERRE的巴黎生產金標，陶瓷飾板約1880年製於歐洲



3755

A GERMAN ENAMELLED GOLD SNUFF-BOX

PROBABLY HANAU, CIRCA 1840, STRUCK WITH TWO FRENCH POST-1838 RESTRICTED WARRANTY MARKS FOR GOLD

oval box, the cover, sides and base set with enameled painted scenes of domestic interiors, within chased and enameled foliate, berry and bead *sablé* borders and side pilasters 3¾ in. (85 mm.) wide

HK\$160,000-220,000

US\$21,000-28,000
£16,000-22,000

德國琺瑯黃金鼻煙盒

可能約1840年製於哈瑙，印有兩枚法國1838年後限制保證金標



3756

A GERMAN VARI-COLOUR GOLD BOÎTE-À-MINIATURES

THE BOX, POSSIBLY BERLIN, CIRCA 1840, THE MINIATURES, FRENCH SCHOOL, CIRCA 1770

rectangular gold-lined box, each side set with a glazed watercolour miniature depicting rural and riverside landscapes, within chased vari-colour gold foliate and scroll borders with slightly raised scroll thumbpiece 3 $\frac{3}{8}$ in. (85 mm.) wide

HK\$320,000-550,000

US\$42,000-71,000
£32,000-54,000

嵌有袖珍肖像畫的德國變色黃金盒

盒身可能約1840年製於柏林，袖珍肖像畫約1770年由法國派製

3757

**A GERMAN GOLD-MOUNTED
HARDSTONE SNUFF-BOX**

HANAU, CIRCA 1830

rectangular red agate box mounted *à jour* within chased gold mounts, the cover centred with an oval hardstone intaglio plaque possibly of Antonio Canova, signed 'A. LALONDRE'
3 in. (75 mm.) wide

HK\$85,000-130,000

US\$11,000-17,000

£8,400-13,000

德國鑲金半寶石鼻煙盒

可能約1830年製於哈瑙



3758

**AN AUSTRIAN VARI-COLOUR GOLD
AND PORCELAIN SNUFF-BOX**

THE BOX, POSSIBLY VIENNA, CIRCA 1780,
THE PORCELAIN PLAQUES CIRCA 1800

rectangular box, the cover, inside cover and base set with porcelain plaques depicting scenes from a village inn, the sides of chased diaper-work gold within scroll borders and applied with vari-colour gold birds, reeds and ponds

3 in. (75 mm.) wide

HK\$55,000-85,000

US\$7,100-11,000

£5,500-8,400

奧地利變色黃金陶瓷鼻煙盒

盒身可能約1780年製於維也納，陶瓷飾板約1800年製



3759

**A LOUIS XVI VARI-COLOUR
GOLD SNUFF-BOX**

BY JEAN-JOSEPH BARRIÈRE (FL. 1763-1793),
MARKED, PARIS, 1788/1789, WITH THE SECOND
CHARGE AND DECHARGE MARKS OF
HENRI CLAVEL 1782-1789

oval box, the cover, sides and base set with panels of
reeded engine-turning stamped at intervals with stars,
with slightly raised chased vari-colour gold foliate *sablé*
borders, the cover centred with a *sablé* cartouche
depicting doves and musical trophies in a landscape
3 3/8 in. (85 mm.) wide
4 oz. (154 gr.)

HK\$220,000-320,000

US\$29,000-41,000
£22,000-32,000

Jean-Joseph Barrière became master in 1763,
sponsored by Henri Delobel. He worked on the
pont-Notre-Dame until 1786 when his shop and
dwelling were pulled down during the reconstruction
of the bridge. He then moved to the rue Coq Saint-
Honoré where he is recorded until the Terror in
1793. Barrière was one of the more productive of
Parisian goldsmiths: the Louvre owns ten examples
of his work; Fürst Carl Anselm von Thurn und Taxis
collection, Regensburg, Lorenz Seelig, *Golddosen
des 18. Jahrhunderts aus dem Besitz der Fürsten von
Thurn und Taxis*. Die Sammlung des Bayerischen
Nationalmuseums im Thurn und Taxis-Museum
Regensburg, Hirmer Verlag, Munich 2007, largely
bought at the time of manufacture, has eight.

路易十六變色黃金鼻煙盒

JEAN-JOSEPH BARRIÈRE (活躍於1763-1793)
製，附有標記，約1788/1789年製於巴黎，印有HENRI
CLAVEL 1782至1789年間使用的第二生產與流通金標





3760

**A GERMAN GOLD-MOUNTED
HARDSTONE SNUFF-BOX**
POSSIBLY DRESDEN, CIRCA 1840

rectangular box, the cover, sides and base set with faceted panels of mocha-coloured striated agate mounted *à jour* within chased gold borders, slightly raised scroll thumbpiece
3½ in. (85 mm.) wide

HK\$42,000-65,000

US\$5,400-8,300

£4,200-6,400

德國鑲金半寶石鼻煙盒
可能約1840年製於德累斯頓

3761

**A CONTINENTAL JEWELLED
HARDSTONE AND ENAMEL
GOLD SNUFF-BOX**

POSSIBLY ITALIAN, CIRCA 1880

oval mottled green and red agate box with matching enamelled sides inlaid with oval polished gold medallions chased with musical trophies, the cover later set with a silver and gold-mounted diamond-set floral spray within a diamond-set outer border
3½ in. (90 mm.) wide

HK\$220,000-320,000

US\$29,000-41,000

£22,000-32,000

嵌有珠寶的歐陸半寶石及琺瑯黃金鼻煙盒
可能約1880年製於意大利





3762

**A GERMAN ENAMELLED
GOLD SNUFF-BOX**

HANAU, CIRCA 1810, STRUCK WITH THE HANAU TOWN MARK FOR EIGHTEEN CARAT GOLD AND A DUTCH IMPORT MARK FOR 1906-1953

rectangular box with canted corners, the cover, sides and base set with panels of sky-blue foliate and diaper-work *taille d'épargne* opaque enamel within white enamel frames and borders, the cover centred with an enamel miniature depicting the story of Joseph from the Book of Genesis, when a silver cup is discovered in the sack of grain belonging to Joseph's youngest brother Benjamin 3½ in. (90 mm.) wide

HK\$130,000-190,000

US\$17,000-24,000
£13,000-19,000

德國琺瑯黃金鼻煙盒

可能約1810年製於哈瑙，印有18K金哈瑙市金標及荷蘭1906至1953年間使用的進口印

3763

**A GERMAN JEWELLED GOLD-MOUNTED
HARDSTONE SNUFF-BOX**

POSSIBLY BERLIN, CIRCA 1750

cartouche-shaped box of amethyst quartz with carved baluster sides, with reeded gold mounts and scalloped flange, the raised scroll thumbpiece set with silver-mounted rubies and diamonds 3½ in. (80 mm.) wide

HK\$110,000-160,000

US\$15,000-21,000
£11,000-16,000

嵌有珠寶的德國鑲金半寶石鼻煙盒

可能約1750年製於柏林



PROPERTY FROM A EUROPEAN
PRIVATE COLLECTION
LOTS 3764-3767

3764

A FRENCH JEWELLED ENAMELLED
GOLD SNUFF-BOX

BY EDOUARD PICARD, MARKED, PARIS,
CIRCA 1870, WITH THE FRENCH THIRD
STANDARD MARK FOR GOLD 1838-1919

oval box, the cover, sides and base set with panels
of horizontal engine-turning stamped with pellets
and enamelled in translucent orangey-red, within
sablé gold green enamel foliate and white enamel
bead borders set at intervals with seed pearls,
the cover centred with an oval bloodstone plaque
set with a carved chalcedony profile of a lady,
sablé gold pilasters with chased vases containing
enamelled flowers
3 3/8 in. (80 mm.) wide

HK\$110,000-160,000

US\$15,000-21,000
£11,000-16,000

嵌有珠寶的法國磁瑯黃金鼻煙盒

EDOUARD PICARD製，附有標記，約1870年製
於巴黎，印有法國1838至1919年間使用的第三標
準金標





3765

**A GERMAN JEWELLED ENAMELLED
GOLD PRESENTATION SNUFF-BOX**
PROBABLY HANAU, CIRCA 1850/1860

cartouche-shaped box with wavy baluster sides, the cover set with an oval plaque enamelled in translucent dark-blue on a *guilloché* ground in a polished gold frame, with applied silver-mounted old and rose-cut diamond initial W, a European Royal crown above, possibly for Wilhelm I (1797-1888), King of Prussia (1861-1888), flanked by four cast gold rosettes surrounded by scrolling foliage, the sides cast with strapwork and applied scrolling foliage between polished gold borders, the base similarly engraved with foliage and scrolls on a *sablé* ground

3¼ in. (95 mm.) wide

HK\$85,000-130,000

US\$11,000-17,000

£8,400-13,000

嵌有珠寶的德國琺瑯黃金鼻煙盒
可能約1850/1860年製於哈瑙



3766

**A LOUIS XV JEWELLED ENAMELLED
GOLD SNUFF-BOX**

BY JEAN-JOSEPH BARRIÈRE (FL. 1763-1793),
MARKED, PARIS, 1767/1768, THE FLANGE
STAMPED 493, WITH THE CHARGE AND
DECHARGE MARKS OF JEAN-JACQUES
PREVOST 1762-1768

oval box, the cover, sides and base set with panels of
peak-pattern engine turning within borders chased
with *fleur-de-lys* and set at intervals with circles, ovals
and rectangles of enamel simulating lapis lazuli, the
cover later centred with an enamel portrait miniature of
King Louis XIV within a gold and diamond frame with
further scattered diamonds
3¼ in. (82 mm.) wide

HK\$220,000-320,000

US\$29,000-41,000
£22,000-32,000

PROVENANCE:

Formerly in the collection of Baron Henri de Rothschild.

嵌有珠寶的路易十五珙瑯黃金鼻煙盒

JEAN-JOSEPH BARRIÈRE (活躍於1763-1793)
製，附有標記，1767/1768年製於巴黎，盒邊壓印493標
記，印有JEAN-JACQUES PREVOST 1762至1768
年間使用的生產與流通金標





3767

A LOUIS XVI ENAMELLED VARI-COLOUR GOLD SNUFF-BOX

BY CHARLES LE BASTIER (FL. 1754-1783), MARKED, PARIS, 1777/1778, STAMPED 844, WITH THE CHARGE AND DECHARGE MARKS OF JEAN-BAPTISTE FOUACHE 1774-1780

oval box, the cover, sides and base set with panels of horizontal engine-turning enamelled in translucent gold, painted *en camaïeu* with brown winter branches within white enamel frames, chased vari-colour gold foliate outer borders with raised flowerheads and vase pilasters
3½ in. (89 mm.) wide

HK\$160,000-220,000

US\$21,000-28,000
£16,000-22,000

Charles Le Bastier was renowned for his lavish boxes and was one of the principal goldsmiths of both the Louis XV and Louis XVI periods. Le Bastier attained the *maîtrise* in 1754, when he was sponsored by Jean Moynat. He worked for Garand and Granchez of the Petit Dunkerque and established his own shop on the rue Thévenot where he worked until his death in 1783. By 1774 Le Bastier had risen to the prominent rank of ninth in his guild (S. Grandjean *et al.*, *Gold Boxes and Miniatures of the Eighteenth Century, The James A. de Rothschild Collection at Waddesdon Manor*, London, 1975, p. 330). The international appeal of Le Bastier's work is evinced by his trade card which was printed in both French and English with the words 'Le Bastier "Makes and Sells Alls [*sic*] sorts of Golden Boxes and others - toys in the Newest fashion"' (H. and S. Berry-Hill, *Antique Gold Boxes: Their Lore and Their Lure*, London, 1960, p. 202). For a discussion on Le Bastier's mark, see S. Grandjean *et al.*, *op. cit.*, pp. 146-147. The Louvre owns thirteen boxes by this maker (see S. Grandjean, *Les tabatières du musée du Louvre*, Paris, 1981, pp. 121-128, nos. 138-150). Further examples of his work can be found in The Gilbert Collection on loan to the Victoria and Albert Museum and The Metropolitan Museum of Art.

路易十六琺瑯變色黃金鼻煙盒

CHARLES LE BASTIER (活躍於1754-1783) 製，附有標記，1777/1778年製於巴黎，附有844壓印，印有JEAN-BAPTISTE FOUACHE 1774至1780年間使用的生產與流通金標





3768

A FRENCH VARI-COLOUR GOLD BOÎTE-À-MINIATURES

BY ALEXANDRE-JEAN-MARIE LEFERRE (FL. 1837 - AFTER 1860), MARKED, PARIS, CIRCA 1840, THE MINIATURES BY PIERRE VICTOR NICOLAS DE MALLIÉE (FL. 1748-1774), STRUCK WITH TWO FRENCH POST-1838 RESTRICTED WARRANTY MARKS FOR GOLD

oval box, the cover, side panels and base set with six *fixé-sous-verre* miniatures depicting rural, riverside and harbour landscapes within raised vari-colour gold foliate borders and pilasters 3 in. (75 mm.) wide

HK\$420,000-650,000

US\$54,000-83,000
£42,000-64,000

Painting under glass, or "fixed under glass", consists of painting the desired scene onto the back of a glass plate using oil or *gouache* colours mixed with a special glue. Glass pictures called "*églomisé*" differ in that the technique uses gold or silver sheets welded between two glass films. The origins of *fixé sous verre* goes back to the early days of Christianity, but the technique was refined in Murano, in Venice, one of the great centers of the art of glass production, before spreading throughout Europe.

嵌有袖珍肖像畫的法國變色黃金盒

ALEXANDRE-JEAN-MARIE LEFERRE (活躍於1837-1860後)製, 附有標記, 約1840年製於巴黎, 袖珍肖像畫由PIERRE VICTOR NICOLAS DE MALLIÉE (活躍於1748-1774)製, 印有兩枚法國1838年後限制保證金標





3769

**A SWISS JEWELLED ENAMELLED
GOLD VINAIGRETTE**

POSSIBLY BY JEAN-GEORGES REMOND,
GENEVA, CIRCA 1780

rectangular box, the cover set with an enamel
miniature depicting a putto within a pearl border
1¼ in. (32 mm.) wide

HK\$22,000-32,000

US\$2,900-4,100
£2,200-3,200

嵌有珠寶的瑞士琺瑯黃金香料瓶

可能由JEAN-GEORGES REMOND製，約1780
年製於日內瓦

3770

**A SWISS JEWELLED ENAMELLED
GOLD PENDANT LOCKET**

PROBABLY GENEVA, CIRCA 1870

cartouche-shaped double-sided gold locket, the
cover centred with an enamel miniature of a lady
within a sky-blue *taille d'épargne* enamel frame,
with seed pearl border and mount
2¾ in. (70 mm.) wide

HK\$32,000-55,000

US\$4,200-7,100
£3,200-5,400

嵌有珠寶的瑞士琺瑯黃金吊墜小盒

可能約1870年製於日內瓦



THE PROPERTY OF A LADY

3771

**A GERMAN JEWELLED ENAMELLED GOLD SNUFF-BOX
SET WITH AN ENAMEL MINIATURE**

BY LES FRÈRES TOUSSAINT (FL. 1752-1803),
MARKED, HANAU, CIRCA 1790/1800, THE MINIATURE
ATTRIBUTED TO THE SEAMAN BROTHERS, CIRCA 1740

oval box, the cover, sides and base with panels of translucent dark blue enamel on a wavy reeded engine-turned ground, with borders and garlands of rich gold *paillon* fruiting vines, within opaque white enamel *taille d'épargne* borders, the cover centred by an earlier oval portrait miniature of a gentleman in gold-bordered breast plate with red lining, blue velvet coat, lace cravat, long powdered curling hair, within a diamond-set openwork scroll frame, the base centred with gold *paillon* floral spray

3 $\frac{3}{8}$ in. (85 mm.) wide

HK\$85,000-130,000

US\$11,000-17,000

£8,400-13,000

PROVENANCE:

Christie's, London, 30-31 May 2012, lot 63.

Charles (1720-1790) and his brother Pierre-Etienne Toussaint (1726-1806) were Berlin *bijoutiers* of Huguenot descent who arrived in Hanau in 1752. Such was their influence amongst the Hanau goldsmiths that by 1762 they were employing several German craftsmen and chasers. In 1773 Etienne Flamant, an expert *guillocheur* originally from Geneva, signed a contract with the leading Hanau goldsmiths for them to supply him with around 385 to 430 gold boxes for decoration every year. Les Frères Toussaint agreed to supply him with 160 gold boxes a year, an extraordinarily high number that they were unable to fulfil. The marks on the current box were used by the company after the signing of the agreement with Flamant in 1773.

嵌有珉瑯袖珍肖像畫及珠寶的德國珉瑯黃金鼻煙盒

LES FRÈRES TOUSSAINT (活躍於1752-1803) 製，附有標記，約1790/1800年製於哈瑙，袖珍肖像畫由SEAMAN兄弟約1740年製





PROPERTY FROM A EUROPEAN PRIVATE COLLECTION

3772

A SWISS JEWELLED ENAMELLED MUSICAL GOLD SNUFF-BOX WITH AUTOMATON, THE MUSIC LESSON

THE BOX BY GUIDON, GIDE & BLONDET FILS (FL. 1801-1804), MARKED, GENEVA, CIRCA 1804, THE MOVEMENT WITH SCRATCHED SIGNATURE 'ANT. ROJARD À GENÈVE, INVINIT ET FECIT, NO 2170', FOR ANTOINE ROJARD, GENEVA

rectangular box with canted corners, the cover, sides and base set with panels of dark-blue translucent enamel on an engine-turned ground, the cover centred with a square enamel plaque depicting the Muse of Music with two cherubs in attendance, within a chased foliate gold and opaque sky-blue enamel frame, with seed-pearl outer border, the sides, base and pilasters with black and white *taille d'épargne* enamel foliate and pellet sprays and borders, the cover opening to reveal a painted polychrome enamel interior with applied vari-coloured gold automaton scene depicting a lady playing the tympanon, accompanied by a standing gentleman beating time and a monkey playing the triangle, two figures to the left clapping their hands when the lady and the music stop, the scene activated by a lever in the band, the base opening to reveal a small compartment that contains the original winding key, with gilt-finished movement with *fusée* and chain, musical pin drum with stacked tuned teeth
3 3/8 in. (88 mm.)

A musical automaton snuff-box marked for Guidon, Rémond, Gide & Cie. with an identical case but with a differing interior animation and signed 'Ante Rojard Genève No 2174' can be seen in the Patek Philippe Museum Collection (Inv. S-770). The present box is scratched with the inventory No. 2170 which suggests that it was made earlier than the box in the Patek Philippe Museum and that the two boxes may originally have been made as a pair. The trade with the Far East flourished in Geneva at this time and it had long been traditional to send objects to China in pairs. According to Alfred Chapuis, 'the Chinese love symmetry; all gifts to a superior, and above all to the Emperor, were given in pairs.' By the 18th and 19th centuries, this passion extended beyond the Imperial court to include aristocratic and wealthy families in China. Thus began a lucrative commerce dominated by the English and Swiss watchmakers - 'Sing Song' merchants as they were called - whose sole aim was to invent increasingly luxurious and whimsical timepieces, specifically to the taste of this new market of choice.

HK\$850,000-1,300,000

US\$110,000-170,000
£84,000-130,000

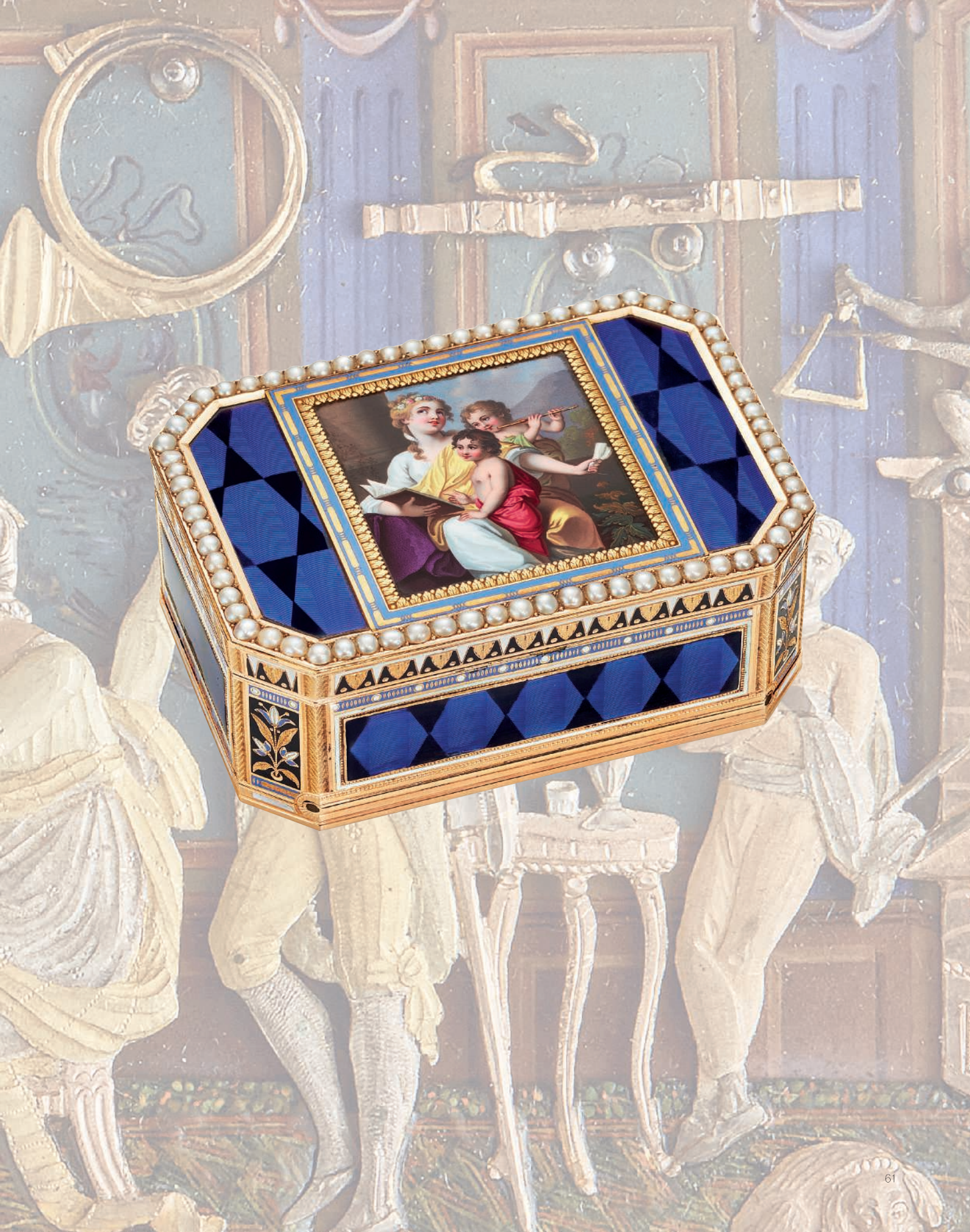
This wonderful musical automaton box is an exceptional example of the high quality of objects produced by the most eminent craftsmen in Geneva. It is extraordinary for the complexity of the musical and mechanisms which drive the five automatons. The first automatons appeared in Geneva in the late 18th century. They were small technical marvels imitating the movements of living creatures or beings, ranging from simpler "Bras en l'Air" figures whose arms would indicate the time, to incredibly complex works of pastoral, theatrical or other scenes such as those of the present box. Some of these automata were fitted with repeating or musical mechanisms and were highly appreciated works of art, not only in Europe, but also by Chinese and Ottoman dignitaries. Jean-Georges Rémond (or Reymond), was active in Geneva from 1783 until approximately 1820. He became Master Goldsmith on 22 December 1783 and founded Georges Rémond & Cie. in 1790. The company specialised in the production of snuff-boxes, snuff-boxes with watches, singing bird-boxes, form watches and musical boxes. Their work was of excellent quality and often with sumptuous decoration.

Rémond established an impressive international enterprise, with offices and production facilities in Geneva and Hanau. He assembled around him a group of very talented artisans, all working to create items of the very highest quality. During the course of his career he registered at least five companies; when the term of one expired, he simply created another, often with the same partners. The snuff box bears the stamp of the firm Guidon, Gide & Blondet fils of Geneva. They conducted business from 1801 until 1804; the company was founded when the company Guidon, Rémond, Gide & Co. closed down on 1 January 1801 and the two partners henceforth traded as Rémond, Lamy & Co. and Guidon Gide & Blondet, respectively. A great number of the finest gold and enamel snuff boxes that were produced in Geneva at the time are signed with marks from either of the three companies. The companies each produced a variety of magnificent objects of vertu, from small *étuis* to elaborate gold and enamel snuff-boxes, boxes in fanciful shapes such as butterflies or roses, and boxes for the most spectacular singing bird mechanisms and automatons.

Antoine Rojard was probably the son of the horologist Jean-Daniel Rojard, and worked in Geneva at the end of the 18th and early 19th century. He is known to have produced complex automatons and watches, including some set with thermometers. The Rojard firm continued until the end of the 19th century and was known for producing repeating watches in the English style.

嵌有珠寶的瑞士磁瑯黃金自動音樂鼻煙盒《音樂課堂》

盒身由GUIDON, GIDE & BLONDET FILS (活躍於1801-1804)製作, 附有標記, 約1804年製於日內瓦, 機芯刻有簽名「ANT. ROJARD À GENÈVE, INVINIT ET FECIT, NO 2170」, 為ANTOINE ROJARD製作。日內瓦



THE PROPERTY OF A EUROPEAN LADY

3773

A SWISS ENAMELLED GOLD VINAIGRETTE

GENEVA, CIRCA 1850

vase-shaped gold flask, the base enamelled in sky-blue and engraved with *taille d'épargne* coloured enamelled flowerheads and trailing foliage, the hinged cover and lower end with translucent red enamelled leaves within *taille d'épargne* gold borders and attached with a gold chain to a gold enamelled suspension ring, the polished gold matrix engraved with the initial 'M' below a coronet

1½ in. (30 mm.) high without the chain

HK\$22,000-32,000

US\$2,900-4,100
£2,200-3,200

瑞士琺瑯黃金香料瓶

約1850年製於日內瓦



3774

A LOUIS XVI ENAMELLED VARI-COLOUR GOLD SNUFF-BOX

BY MELCHOIR-RENÉ BARRE (FL. 1768-1791), MARKED, PARIS, 1779/1780, WITH THE CHARGE AND DECHARGE MARKS OF JEAN-BAPTISTE FOUACHE 1774-1780, STAMPED WITH A FRENCH POST-1838 RESTRICTED WARRANTY MARK FOR GOLD

oval box, the cover, sides and base set with panels of translucent dark-blue enamel on an engine-turned ground stamped at intervals with pellets, within *entrelac* vari-colour gold *sablé* borders and pilasters hung with foliate swags, the cover set with an oval enamel plaque depicting a scene from the classics within a raised beaded gold frame

3½ in. (80 mm.) wide

HK\$320,000-550,000

US\$42,000-71,000
£32,000-54,000

Melchior-René Barre was apprenticed to the master goldsmith Jean Frémin in 1751. He became master on 11 June 1768, sponsored by Jean-Louis Bouillierot. He was then living in the place Dauphine, where he is recorded in 1772 in the *Almanach d'Indication* for *le bijou d'or*. By 1774 he had moved to the quai des Orfèvres, advertising the loss of 'une tabatière marbrée avec un portrait de femme'. Barre retired in 1791.

路易十六琺瑯變色黃金鼻煙盒

MELCHOIR-RENÉ BARRE (活躍於1768-1791) 製，附有標記，約1779/1780年製於巴黎，附有JEAN-BAPTISTE FOUACHE 1774至1780年間使用的生產與流通金標，印有法國1838年後限制保證金標



Neuber à Dresde



3775

AN IMPORTANT SAXON GOLD AND HARDSTONE BONBONNIÈRE

BY JOHANN-CHRISTIAN NEUBER (1736-1808), SIGNED ON THE FLANGE 'NEUBER À DRESDE.', DRESDEN, CIRCA 1780

circular gold-lined box, the cover, sides and base inlaid with radiating red and mocha-coloured striated agate ribbons heightened with carnelian mounts, the sides with alternating ovolos of striated agate and polished gold set with sky-blue coloured glass forget-me-nots with green jasper leaves and inlaid with carnelian, the cover centred with an oval medallion of dendritic agate within a gold-mounted carnelian border, the base with a carnelian rosette within a laurel border of green jasper and centred by a sky-blue coloured-glass forget-me-not, within simulated pearl borders, the flange engraved 'Neuber à Dresde'
2½ in. (64 mm.) diam.

HK\$3,200,000-5,200,000

US\$420,000-670,000

£320,000-510,000

PROVENANCE:

S. J. Phillips, London, circa 1950.
Collection of Félix Kramarsky.
Sotheby's, London, 3 November 1958, lot 18.

LITERATURE:

W. Holzhausen, 'Johann Christian Neuber', *Apollo*, October 1950, p. 106, fig. VI., ill.
A. Kugel, *Gold, Jasper and Carnelian Johann Christian Neuber at the Saxon Court*, London, 2012, no. 67, ill. no. 67, p. 345.

Born in Neuwunsdorf in 1736, Johann Christian Neuber was apprenticed at the age of seventeen to Johann Friedrich Trechaon. He became a master of the goldsmith's guild in Dresden in July 1762 and in 1769, became director of the Green Vaults succeeding Taddel. Following his appointment as court jeweller in 1775, he applied to Friedrich Augustus III for the concession of an amethyst and jasper mine near Schlottwitz, south of Dresden. Saxony's geology was renowned for the quality and diversity of its gemstones which had been exploited

by Dresden court jewellers since the late 16th century. The mines yielded jasper, carnelian, garnet, amethyst, smoky quartz, citrine, bloodstone, rock crystal, petrified wood as well as a huge variety of agate including the striated agate used for this box and that Neuber favored for his geometric pattern boxes, justly described by Sacheverell Sitwell as the 'the epitome of elegant smartness' (see K. Snowman, *Eighteenth Century Gold Boxes of Europe*, London, 1990 p. 442).

This box, one of only fourteen signed 'Neuber à Dresde' known to this day, dates from 1780-1785 when Neuber's production intensified as his popularity grew; the design is simplified but the chromatic palette which is more vivid in order to enhance the central medallion of moss agate, a stone much sought after in Europe by collectors of natural history specimens and for incorporating into snuffboxes and jewellery.

撒克遜黃金及半寶石糖果盒

JOHANN-CHRISTIAN NEUBER (1736-1808)製，盒邊簽名「NEUBER À DRESDE.」，約1780年製於德累斯頓





GLOSSARY

Glossary of objects

金盒詞彙表

Bodkin case

A container designed to hold bodkins, long, thick needles with a large, elongated eye, generally used for threading ribbon or tape through lace. Smaller designs were used to hold needles.

長針盒

用於存放長粗針的容器，長粗針的針眼長而大，一般用於將緞帶或帶子穿過蕾絲，較小的金盒用作存放縫紉針。

Boîte-à-fard, Boîte-a-mouches or Patch-box

A box with one or more compartments to house beauty spots worn on the face, and another for the brush used to apply the patch. The interior cover is usually set with a mirror.

美妝盒、假痣盒或小布頭盒

盒內設有一個或多個間隔，用於存放貼於臉上的假痣，另一格則存放用來貼上假痣的刷。盒蓋內通常裝有鏡子。

Bonbonnière

A box for confectionery such as dried fruits, nuts, seeds, sometimes coated with sugar. Stylistically, the main distinction between a snuff-box and a bonbonnière is that the latter is typically circular and with a detachable cover.

糖果盒

用於盛放乾果、堅果和瓜子等甜食，糖果的表面有時包有糖衣。鼻煙盒與糖果盒的主要分別在於後者一般為圓形，而且盒蓋可以拿下。

Carnet-de-bal

A container designed to hold an ivory tablet and pencil. Carried by ladies at dances, the name of her dance partners would be inscribed on the ivory tablet. They are often decorated with portrait miniatures and the initials of the owner and the word 'Souvenir'

舞會笏筒

專門存放一片象牙笏筒和一支鉛筆的容器，女士會帶著笏筒參加舞會，並將舞伴的姓名刻在象牙笏筒上。舞會笏筒上通常飾有袖珍肖像畫，以及笏筒主人姓名的縮寫和「紀念品」一字。

Cheroot case

Typically of upright form with a hinged cover, designed to hold cheroots, a type of cigar clipped at both ends.

方頭雪茄煙盒

通常為直立容器，附較鏈盒蓋，專門存放方頭雪茄（兩端皆切平的雪茄）。

Étui

A general term used to describe a container which was designed to hold a specific object or objects.

簡匣

泛指用作存放特定物品或小物的容器。

Fob-seal

A small seal often worn on a chain or ribbon and kept in the fob, a small pocket in the waistband of a gentleman's breeches. A fob-seal is usually gold or gilt-metal mounted and set with a glass or hardstone matrix carved with a coat-of-arms or initials to impress wax used to seal a letter.

鍊袋印章

指掛在長鏈或緞帶的小印章，並收藏在男士腰帶的懷錶袋內。印章多為鑲金或鍍金屬，嵌有玻璃或半寶石，並刻有紋章或名字縮寫，用於蓋在信件的封蠟上。

Freedom Box

A box presented with the Freedom of a town, corporation or institution to an individual in recognition of their position or achievements. The document recording the award was often folded and contained within the box.

榮譽盒

由城市、企業或機構授予個人的榮譽金盒，以認可其身份及成就，而記載獎項的文件一般也摺疊放在金盒內。

Nécessaire

A container designed to hold implements relating to sewing or grooming, such as small scissors, needles, flick knives, ear spoons, tweezers, and toothpicks.

工具盒

用於存放縫紉或整理儀容工具的容器，例如小剪刀、針、彈簧刀、挖耳棒、鑷子和牙籤。

Sealing-wax case

Typically a gold cylindrical object with a detachable cover to house sealing wax. The matrices of the cases are often engraved with a coat-of-arms for the owner to impress his or her arms into the wax used to seal a letter.

封蠟筒

封蠟筒多為圓柱形，配以活動筒蓋，用於存放封蠟。封蠟筒的底部一般刻有物主的紋章，用於將個人紋章壓印在信件的封蠟上。

Vinaigrette

A small box with hinged lid opening to reveal a pierced grill under which would be a sponge soaked in an oily, sweet-smelling substance. Used by men and women usually when travelling to carry around a pleasant aroma.

香料瓶

附有較鏈瓶蓋的小瓶，瓶內有一塊穿孔格柵，底部有一塊浸泡在芬芳香油的海綿。男士和女士會隨身攜帶香料瓶，令渾身散發芳香。

Glossary of techniques

工藝詞彙表

À-jour

A term used to describe the application of precious stones or coloured glass where daylight can penetrate through the stone from behind, or panels of a box which are mounted in way that the reverse is visible from behind.

空窗

指鑲嵌寶石或彩色玻璃的工藝，使陽光能從寶石背後透入，又或盒身的鑲嵌裝飾，從背面也可看到精巧設計。

Chasing

The technique of re-shaping a gold or silver surface by hammering from above.

凹雕

利用錘子從上方敲打黃金或銀的表面塑造形狀。

Composition Tortoiseshell

Tortoiseshell which has been ground down and reconstituted and then bound together, as opposed to having been carved directly from the shell. Composition boxes therefore do not have the typical markings seen in tortoiseshell, with lighter and darker patches.

合成玳瑁

將玳瑁磨碎和重組，然後再次結合，而非直接雕刻玳瑁。因此，合成玳瑁盒沒有玳瑁殼常見的深淺色塊紋理。

En basse-taille

A term used to describe the technique of firing translucent enamel onto a shallow carved surface.

透底琺瑯

在淺雕表面上燒製透明琺瑯的工藝。

En cage

A term used to describe the way in which a gold box, whose sides are made of independent panels, such as hardstone plaques, portrait miniatures or wood, are held in place by a frame of precious metal.

金框工藝

此工藝以貴金屬框架固定金盒的獨立盒邊，例如半寶石飾板、袖珍肖像畫或木板。

En plein

A term used to describe the technique of applying enamel directly onto the surface of a box, rather than on panels which are then mounted into the box.

琺瑯飾面工藝

指直接在金盒表面塗上琺瑯的工藝，而非先塗上飾板，再鑲嵌於盒上。

Engine-turning or guilloché

The technique of engraving a pattern into a flat surface with the use of a lathe.

機鏤

利用車床在平面上雕刻花紋的工藝。

Repoussé

Similar to chasing, the technique of hammering the gold surface from the underside.

浮雕

類似凹雕的工藝，但從底部錘打黃金的表面。

Paillons

Shaped pieces of thin gold placed between layers of translucent enamel. Typical designs include circles and stars and they became fashionable towards the end of the 18th century in Paris, Geneva and Hanau.

薄片鑲嵌

將已成型的薄片置於透明琺瑯之間，設計多為圓形及星形，於十八世紀末在巴黎、日內瓦和哈瑙非常盛行。

Piqué-point

Pinpoints of gold embedded within a soft material, such as ivory and tortoiseshell.

金點鑲嵌

將細小的黃金顆粒鑲嵌在象牙和玳瑁等柔軟物料內。

Piqué-posé

Strips of gold embedded within a soft material, such as ivory and tortoiseshell.

金條鑲嵌

將金條鑲嵌在象牙和玳瑁等柔軟物料內。

Sabl, Matted, and Frosted

Used to describe a surface which is unpolished and granulated in appearance, created by hammering the gold with tiny chisel hammers which had a pattern of grains on the striking end.

絨面、啞面及磨砂

形容未拋光、呈粒狀的表面，利用錘頭帶有顆粒的小錘子錘打而成。

Vari-colour gold

A term used to describe gold of different tints, typically rose, green and white. This is achieved by mixing various other metals with the gold.

變色黃金

形容不同顏色的黃金，多為玫瑰色、綠色和白色，透過將不同金屬混合黃金而成。

CONDITIONS OF SALE • BUYING AT CHRISTIE'S

CONDITIONS OF SALE

These Conditions of Sale and the Important Notices and Explanation of Cataloguing Practice set out the terms on which we offer the **lots** listed in this catalogue for sale. By registering to bid and/or by bidding at auction you agree to these terms, so you should read them carefully before doing so. You will find a glossary at the end explaining the meaning of the words and expressions coloured in **bold**.

Unless we own a **lot** (Δ symbol), Christie's acts as agent for the seller.

A BEFORE THE SALE

1 DESCRIPTION OF LOTS

(a) Certain words used in the catalogue description have special meanings. You can find details of these on the page headed "Important Notices and Explanation of Cataloguing Practice" which forms part of these terms. You can find a key to the Symbols found next to certain catalogue entries under the section of the catalogue called "Symbols Used in this Catalogue".

(b) Our description of any **lot** in the catalogue, any **condition** report and any other statement made by us (whether orally or in writing) about any **lot**, including about its nature or **condition**, artist, period, materials, approximate dimensions or **provenance** are our opinion and not to be relied upon as a statement of fact. We do not carry out in-depth research of the sort carried out by professional historians and scholars. All dimensions and weights are approximate only.

2 OUR RESPONSIBILITY FOR OUR DESCRIPTION OF LOTS

We do not provide any guarantee in relation to the nature of a **lot** apart from our **authenticity warranty** contained in paragraph E2 and to the extent provided in paragraph I below.

3 CONDITION

(a) The **condition** of **lots** sold in our auctions can vary widely due to factors such as age, previous damage, restoration, repair and wear and tear. Their nature means that they will rarely be in perfect **condition**. **Lots** are sold "as is" in the **condition** they are in at the time of the sale, without any representation or warranty or assumption of liability of any kind as to **condition** by Christie's or by the seller.

(b) Any reference to **condition** in a catalogue entry or in a **condition** report will not amount to a full description of **condition**, and images may not show a **lot** clearly. Colours and shades may look different in print or on screen to how they look on physical inspection. **Condition** reports may be available to help you evaluate the **condition** of a **lot**. **Condition** reports are provided free of charge as a convenience to our buyers and are for guidance only. They offer our opinion but they may not refer to all faults, inherent defects, restoration, alteration or adaptation because our staff are not professional restorers or conservators. For that reason they are not an alternative to examining a **lot** in person or taking your own professional advice. It is your responsibility to ensure that you have requested, received and considered any **condition** report.

4 VIEWING LOTS PRE-AUCTION

(a) If you are planning to bid on a **lot**, you should inspect it personally or through a knowledgeable representative before you make a bid to make sure that you accept the description and its **condition**. We recommend you get your own advice from a restorer or other professional adviser.

(b) Pre-auction viewings are open to the public free of charge. Our specialists may be available to answer questions at pre-auction viewings or by appointment.

5 ESTIMATES

Estimates are based on the **condition**, rarity, quality and **provenance** of the **lots** and on prices recently paid at auction for similar property. **Estimates** can change. Neither you, nor anyone else, may rely on any **estimates** as a prediction or guarantee of the

actual selling price of a **lot** or its value for any other purpose. **Estimates** do not include the **buyer's premium** or any applicable taxes. **Estimates** may be shown in different currencies from that of the saleroom for guidance only. The rate of exchange used in our printed catalogues is fixed at the latest practical date prior to the printing of the catalogue and may have changed by the time of our sale.

6 WITHDRAWAL

Christie's may, at its option, withdraw any **lot** at any time prior to or during the sale of the **lot**. Christie's has no liability to you for any decision to withdraw.

7 JEWELLERY

(a) Coloured gemstones (such as rubies, sapphires and emeralds) may have been treated to improve their look, through methods such as heating and oiling. These methods are accepted by the international jewellery trade but may make the gemstone less strong and/or require special care over time.

(b) All types of gemstones may have been improved by some method. You may request a gemmological report for any item which does not have a report if the request is made to us at least three weeks before the date of the auction and you pay the fee for the report.

(c) We do not obtain a gemmological report for every gemstone sold in our auctions. Where we do get gemmological reports from internationally accepted gemmological laboratories, such reports will be described in the catalogue. Reports from American gemmological laboratories will describe any improvement or treatment to the gemstone. Reports from European gemmological laboratories will describe any improvement or treatment only if we request that they do so, but will confirm when no improvement or treatment has been made. Because of differences in approach and technology, laboratories may not agree whether a particular gemstone has been treated, the amount of treatment or whether treatment is permanent. The gemmological laboratories will only report on the improvements or treatments known to the laboratories at the date of the report.

(d) For jewellery sales, **estimates** are based on the information in any gemmological report or, if no report is available, assume that the gemstones may have been treated or enhanced.

8 WATCHES & CLOCKS

(a) Almost all clocks and watches are repaired in their lifetime and may include parts which are not original. We do not give a **warranty** that any individual component part of any watch or clock is **authentic**. Watchbands described as "associated" are not part of the original watch and may not be **authentic**. Clocks may be sold without pendulums, weights or keys.

(b) As collectors' watches and clocks often have very fine and complex mechanisms, a general service, change of battery or further repair work may be necessary, for which you are responsible. We do not give a **warranty** that any watch or clock is in good working order. Certificates are not available unless described in the catalogue.

(c) Most watches have been opened to find out the type and quality of movement. For that reason, watches with water resistant cases may not be waterproof and we recommend you have them checked by a competent watchmaker before use. Important information about the sale, transport and shipping of watches and watchbands can be found in paragraph H2(f).

B REGISTERING TO BID

1 NEW BIDDERS

(a) If this is your first time bidding at Christie's or you are a returning bidder who has not bought anything from any of our salerooms within the last two years you must register at least 48 hours before an auction to give us enough time to process and approve your registration. We may, at our option, decline to permit you to register as a bidder. You will be asked for the following:

(i) for individuals: Photo identification (driving licence, national identity card or passport) and, if not shown on the ID document, proof of your current address (for example, a current utility bill or bank statement);

(ii) for corporate clients: Your Certificate of Incorporation or equivalent document(s) showing your name and registered address, photo ID copy of the authorized bidder, letter of authorization duly signed by legal representative and, where applicable, chopped with company stamp and together with documentary proof of directors and beneficial owners;

(iii) for trusts, partnerships, offshore companies and other business structures, please contact us in advance to discuss our requirements.

(b) We may also ask you to give us a financial reference and/or a deposit as a condition of allowing you to bid. For help, please contact our Client Services Department on +852 2760 1766.

2 RETURNING BIDDERS

We may at our option ask you for current identification as described in paragraph B1(a) above, a financial reference or a deposit as a condition of allowing you to bid. If you have not bought anything from any of our salerooms in the last two years or if you want to spend more than on previous occasions, please contact our Bids Department on +852 2978 9910 or email to bidsasia@christies.com.

3 IF YOU FAIL TO PROVIDE THE RIGHT DOCUMENTS

If in our opinion you do not satisfy our bidder identification and registration procedures including, but not limited to completing any anti-money laundering and/or anti-terrorism financing checks we may require to our satisfaction, we may refuse to register you to bid, and if you make a successful bid, we may cancel the contract for sale between you and the seller. Christie's may, at its option, specify the type of photo identification it will accept, for the purposes of bidder identification and registration procedures.

4 BIDDING ON BEHALF OF ANOTHER PERSON

(a) **As authorised bidder:** If you are bidding on behalf of another person, that person will need to complete the registration requirements above before you can bid, and supply a signed letter authorising you to bid for him/her.

(b) **As agent for an undisclosed principal:** If you are bidding as an agent for an undisclosed principal (the ultimate buyer(s)), you accept personal liability to pay the **purchase price** and all other sums due. Further, you warrant that:

(i) you have conducted appropriate customer due diligence on the ultimate buyer(s) of the **lot(s)** in accordance with any and all applicable anti-money laundering and sanctions laws, consent to us relying on this due diligence, and you will retain for a period of not less than 5 years the documentation and records evidencing the due diligence;

(ii) you will make such documentation and records evidencing your due diligence promptly available for immediate inspection by an independent third-party auditor upon our written request to do so. We will not disclose such documentation and records to any third-parties unless (1) it is already in the public domain, (2) it is required to be disclosed by law, or (3) it is in accordance with anti-money laundering laws;

(iii) the arrangements between you and the ultimate buyer(s) are not designed to facilitate tax crimes;

(iv) you do not know, and have no reason to suspect, that the funds used for settlement are connected with, the proceeds of any criminal activity or that the ultimate buyer(s) are under investigation, charged with or convicted of money laundering, terrorist activities or other money laundering predicate crimes.

A bidder accepts personal liability to pay the **purchase price** and all other sums due unless it has been agreed in writing with Christie's before commencement of the auction that the bidder is acting as an agent on behalf of a named third party acceptable to Christie's and that Christie's will only seek payment from the named third party.

5 BIDDING IN PERSON

If you wish to bid in the saleroom you must register for a numbered bidding paddle at least 30 minutes before the auction. For help, please contact the Client Services Department on +852 2760 1766.

6 BIDDING SERVICES

The bidding services described below are a free service offered as a convenience to our clients and Christie's is not responsible for any error (human or otherwise), omission or breakdown in providing these services.

(A) PHONE BIDS

Your request for this service must be made no later than 24 hours prior to the auction. We will accept bids by telephone for **lots** only if our staff are available to take the bids. Telephone bids cannot be accepted for lots estimated below HK\$30,000. If you need to bid in a language other than in English, you must arrange this well before the auction. We may record telephone bids. By bidding on the telephone, you are agreeing to us recording your conversations. You also agree that your telephone bids are governed by these Conditions of Sale.

(B) INTERNET BIDS ON CHRISTIE'S LIVE™

For certain auctions we will accept bids over the Internet. Please visit www.christies.com/livebidding and click on the 'Bid Live' icon to see details of how to watch, hear and bid at the auction from your computer. As well as these Conditions of Sale, internet bids are governed by the Christie's LIVE™ terms of use which are available on www.christies.com.

(C) WRITTEN BIDS

You can find a Written Bid Form at the back of our catalogues, at any Christie's office or by choosing the sale and viewing the **lots** online at www.christies.com. We must receive your completed Written Bid Form at least 24 hours before the auction. Bids must be placed in the currency of the saleroom. The auctioneer will take reasonable steps to carry out written bids at the lowest possible price, taking into account the **reserve**. If you make a written bid on a **lot** which does not have a **reserve** and there is no higher bid than yours, we will bid on your behalf at around 50% of the **low estimate** or, if lower, the amount of your bid. If we receive written bids on a **lot** for identical amounts, and at the auction these are the highest bids on the **lot**, we will sell the **lot** to the bidder whose written bid we received first.

C AT THE SALE

1 WHO CAN ENTER THE AUCTION

We may, at our option, refuse admission to our premises or decline to permit participation in any auction or to reject any bid.

2 RESERVES

Unless otherwise indicated, all **lots** are subject to a **reserve**. We identify **lots** that are offered without **reserve** with the symbol **•** next to the lot number. The **reserve** cannot be more than the **lot's low estimate**.

3 AUCTIONEER'S DISCRETION

The auctioneer can at his sole option:

- refuse any bid;
- move the bidding backwards or forwards in any way he or she may decide, or change the order of the **lots**;
- withdraw any **lot**;
- divide any **lot** or combine any two or more **lots**;
- reopen or continue the bidding even after the hammer has fallen; and
- in the case of error or dispute and whether during or after the auction, to continue the bidding, determine the successful bidder, cancel the sale of the **lot**, or reoffer and resell any **lot**. If any dispute relating to bidding arises during or after the auction, the auctioneer's decision in exercise of this option is final.

4 BIDDING

The auctioneer accepts bids from:

- bidders in the saleroom;
- telephone bidders, and internet bidders through 'Christie's LIVE™' (as shown above in Section B6); and
- written bids (also known as absentee bids or commission bids) left with us by a bidder before the auction.

5 BIDDING ON BEHALF OF THE SELLER

The auctioneer may, at his or her sole option, bid on behalf of the seller up to but not including the amount of the **reserve** either by making consecutive

bids or by making bids in response to other bidders. The auctioneer will not identify these as bids made on behalf of the seller and will not make any bid on behalf of the seller at or above the **reserve**. If **lots** are offered without **reserve**, the auctioneer will generally decide to open the bidding at 50% of the **low estimate** for the **lot**. If no bid is made at that level, the auctioneer may decide to go backwards at his or her sole option until a bid is made, and then continue up from that amount. In the event that there are no bids on a **lot**, the auctioneer may deem such **lot** unsold.

6 BID INCREMENTS

Bidding generally starts below the **low estimate** and increases in steps (bid increments). The auctioneer will decide at his or her sole option where the bidding should start and the bid increments. The usual bid increments are shown for guidance only on the Written Bid Form at the back of this catalogue.

7 CURRENCY CONVERTER

The saleroom video screens, Christie's LIVE™ and Christie's website may show bids in some other major currencies from that of the saleroom. Any conversion is for guidance only and we cannot be bound by any rate of exchange used by Christie's. Christie's is not responsible for any error (human or otherwise), omission or breakdown in providing these services.

8 SUCCESSFUL BIDS

Unless the auctioneer decides to use his or her discretion as set out in paragraph C3 above, when the auctioneer's hammer strikes, we have accepted the last bid. This means a contract for sale has been formed between the seller and the successful bidder. We will issue an invoice only to the registered bidder who made the successful bid. While we send out invoices by post and/or email after the auction, we do not accept responsibility for telling you whether or not your bid was successful. If you have bid by written bid, you should contact us by telephone or in person as soon as possible after the auction to get details of the outcome of your bid to avoid having to pay unnecessary storage charges.

9 LOCAL BIDDING LAWS

You agree that when bidding in any of our sales that you will strictly comply with all local laws and regulations in force at the time of the sale for the relevant sale site.

D THE BUYER'S PREMIUM, TAXES

1 THE BUYER'S PREMIUM

In addition to the **hammer price**, the successful bidder agrees to pay us a **buyer's premium** on the **hammer price** of each **lot** sold. On all **lots** we charge 25% of the **hammer price** up to and including HK\$2,000,000, 20% on that part of the **hammer price** over HK\$2,000,000 and up to and including HK\$30,000,000, and 12.5% of that part of the **hammer price** above HK\$30,000,000.

2 TAXES

The successful bidder is responsible for any applicable tax including any VAT, sales or compensating use tax or equivalent tax wherever such taxes may arise on the **hammer price** and the **buyer's premium**. It is the buyer's responsibility to ascertain and pay all taxes due. In all circumstances Hong Kong law takes precedence. Christie's recommends you obtain your own independent tax advice.

For **lots** Christie's ships to the United States, a state sales or use tax may be due on the **hammer price**, **buyer's premium** and shipping costs on the **lot**, regardless of the nationality or citizenship of the purchaser. Christie's is currently required to collect sales tax for **lots** it ships to the following states: New York. The applicable sales tax rate will be determined based upon the state, county, or locale to which the **lot** will be shipped. Successful bidders claiming an exemption from sales tax must provide appropriate documentation to Christie's prior to the release of the **lot**. For shipments to those states for which Christie's is not required to collect sales tax, a successful bidder may be required to remit use tax to that state's taxing authorities. Christie's recommends you obtain your own independent tax advice with further questions.

E WARRANTIES

1 SELLER'S WARRANTIES

For each **lot**, the seller gives a **warranty** that the seller:

(a) is the owner of the **lot** or a joint owner of the **lot** acting with the permission of the other co-owners or, if the seller is not the owner or a joint owner of the **lot**, has the permission of the owner to sell the **lot**, or the right to do so in law; and

(b) has the right to transfer ownership of the **lot** to the buyer without any restrictions or claims by anyone else.

If either of the above **warranties** are incorrect, the seller shall not have to pay more than the **purchase price** (as defined in paragraph F1(a) below) paid by you to us. The seller will not be responsible to you for any reason for loss of profits or business, expected savings, loss of opportunity or interest, costs, damages, **other damages** or expenses. The seller gives no **warranty** in relation to any **lot** other than as set out above and, as far as the seller is allowed by law, all **warranties** from the seller to you, and all other obligations upon the seller which may be added to this agreement by law, are excluded.

2 OUR AUTHENTICITY WARRANTY

We warrant, subject to the terms below, that the **lots** in our sales are **authentic** (our '**authenticity warranty**'). If, within 5 years of the date of the auction, you give notice to us that your **lot** is not **authentic**, subject to the terms below, we will refund the **purchase price** paid by you. The meaning of **authentic** can be found in the glossary at the end of these Conditions of Sale. The terms of the **authenticity warranty** are as follows:

(a) It will be honoured for claims notified within a period of 5 years from the date of the auction. After such time, we will not be obligated to honour the **authenticity warranty**.

(b) It is given only for information shown in **UPPERCASE type** in the first line of the **catalogue description** (the '**Heading**'). It does not apply to any information other than in the **Heading** even if shown in **UPPERCASE type**.

(c) The **authenticity warranty** does not apply to any **Heading** or part of a **Heading** which is **qualified**. **Qualified** means limited by a clarification in a **lot's catalogue description** or by the use in a **Heading** of one of the terms listed in the section titled **Qualified Headings** on the page of the catalogue headed 'Important Notices and Explanation of Cataloguing Practice'. For example, use of the term 'ATTRIBUTED TO...' in a **Heading** means that the **lot** is in Christie's opinion probably a work by the named artist but no **warranty** is provided that the **lot** is the work of the named artist. Please read the full list of **Qualified Headings** and a **lot's full catalogue description** before bidding.

(d) The **authenticity warranty** applies to the **Heading** as amended by any **Saleroom Notice**.

(e) The **authenticity warranty** does not apply where scholarship has developed since the auction leading to a change in generally accepted opinion. Further, it does not apply if the **Heading** either matched the generally accepted opinion of experts at the date of the sale or drew attention to any conflict of opinion.

(f) The **authenticity warranty** does not apply if the **lot** can only be shown not to be **authentic** by a scientific process which, on the date we published the catalogue, was not available or generally accepted for use, or which was unreasonably expensive or impractical, or which was likely to have damaged the **lot**.

(g) The benefit of the **authenticity warranty** is only available to the original buyer shown on the invoice for the **lot** issued at the time of the sale and only if, on the date of the notice of claim, the original buyer is the full owner of the **lot** and the **lot** is free from any claim, interest or restriction by anyone else. The benefit of this **authenticity warranty** may not be transferred to anyone else.

(h) In order to claim under the **authenticity warranty** you must:

(i) give us written notice of your claim within 5 years of the date of the auction. We may require full details and supporting evidence of any such claim;

(ii) at Christie's option, we may require you to provide the written opinions of two recognised experts in the field of the **lot** mutually agreed by you and us in advance confirming that the **lot** is not **authentic**. If we have any doubts, we reserve the right to obtain additional opinions at our expense; and

(iii) return the **lot** at your expense to the saleroom from which you bought it in the **condition** it was in at the time of sale.

(i) Your only right under this **authenticity warranty** is to cancel the sale and receive a refund of the **purchase price** paid by you to us. We will not, in any

circumstances, be required to pay you more than the **purchase price** nor will we be liable for any loss of profits or business, loss of opportunity or value, expected savings or interest, costs, damages, **other damages** or expenses.

(j) **Books.** Where the **lot** is a book, we give an additional **warranty** for 14 days from the date of the sale that if on collation any **lot** is defective in text or illustration, we will refund your **purchase price**, subject to the following terms:

- (a) This additional **warranty** does not apply to:
 - (i) the absence of blanks, half titles, tissue guards or advertisements, damage in respect of bindings, stains, spotting, marginal tears or other defects not affecting completeness of the text or illustration;
 - (ii) drawings, autographs, letters or manuscripts, signed photographs, music, atlases, maps or periodicals;
 - (iii) books not identified by title;
 - (iv) **lots** sold without a printed **estimate**;
 - (v) books which are described in the catalogue as sold not subject to return; or
 - (vi) defects stated in any **condition** report or announced at the time of sale.
- (b) To make a claim under this paragraph you must give written details of the defect and return the **lot** to the sale room at which you bought it in the same **condition** as at the time of sale, within 14 days of the date of the sale.

(k) **South East Asian Modern and Contemporary Art and Chinese Calligraphy and Painting.** In these categories, the **authenticity warranty** does not apply because current scholarship does not permit the making of definitive statements. Christie's does, however, agree to cancel a sale in either of these two categories of art where it has been proven the **lot** is a forgery. Christie's will refund to the original buyer the **purchase price** in accordance with the terms of Christie's **authenticity warranty**, provided that the original buyer notifies us with full supporting evidence documenting the forgery claim within twelve (12) months of the date of the auction. Such evidence must be satisfactory to us that the **lot** is a forgery in accordance with paragraph E2(h)(ii) above and the **lot** must be returned to us in accordance with E2h(iii) above. Paragraphs E2(b), (c), (d), (e), (f) and (g) and (i) also apply to a claim under these categories.

(l) **South East Asian Modern and Contemporary Art and Chinese Calligraphy and Painting.** In these categories, the **authenticity warranty** does not apply because current scholarship does not permit the making of definitive statements. Christie's does, however, agree to cancel a sale in either of these two categories of art where it has been proven the **lot** is a forgery. Christie's will refund to the original buyer the **purchase price** in accordance with the terms of Christie's **authenticity warranty**, provided that the original buyer notifies us with full supporting evidence documenting the forgery claim within twelve (12) months of the date of the auction. Such evidence must be satisfactory to us that the **lot** is a forgery in accordance with paragraph E2(h)(ii) above and the **lot** must be returned to us in accordance with E2h(iii) above. Paragraphs E2(b), (c), (d), (e), (f) and (g) and (i) also apply to a claim under these categories.

F PAYMENT

1 HOW TO PAY

(a) Immediately following the auction, you must pay the **purchase price** being:

- (i) the **hammer price**; and
- (ii) the **buyer's premium**; and
- (iii) any duties, goods, sales, use, compensating or service tax.

Payment is due no later than by the end of the 7th calendar day following the date of the auction (the "**due date**").

(b) We will only accept payment from the registered bidder. Once issued, we cannot change the buyer's name on an invoice or re-issue the invoice in a different name. You must pay immediately even if you want to export the **lot** and you need an export licence.

(c) You must pay for **lots** bought at Christie's in Hong Kong in the currency stated on the invoice in one of the following ways:

- (i) Christie's is pleased to offer clients the option of viewing invoices, paying and arranging shipping online through MyChristie's. To log in, or if you have yet to create an online account, please go to: www.christies.com/MyChristies. While this service is available for most lots, payment and shipping must be arranged offline for some items. Please contact Post-Sale Services directly to coordinate.
- (ii) Wire transfer

You must make payments to:

HSBC
Head Office
1 Queen's Road, Central, Hong Kong
Bank code: 004
Account No. 062-305438-001
Account Name: Christie's Hong Kong Limited
SWIFT: HSBCHKHHHKH

(iii) Credit Card.

We accept most major credit cards subject to certain conditions. We accept payments in person by credit card up to HK\$3,000,000 per auction sale although conditions and restrictions apply. China Union Pay is accepted with no limits on amounts. To make a 'cardholder not present' (CNP) payment, we accept payment up to HK\$3,000,000 per auction sale. CNP

payments cannot be accepted by all salerooms and are subject to certain restrictions. Details of the conditions and restrictions applicable to credit card payments are available from our Post-Sale Services Department, whose details are set out in paragraph (d) below.

(iv) Cash

We accept cash subject to a maximum of HKD80,000 per buyer per year at our Post-Sale Services Department only (subject to conditions).

(v) Banker's draft

You must make these payable to Christie's Hong Kong Limited and there may be conditions.

(vi) Cheque

You must make cheques payable to Christie's Hong Kong Limited. Cheques must be from accounts in Hong Kong dollar from a Hong Kong bank.

(d) You must quote the sale number, your invoice number and client number when making a payment. All payments sent by post must be sent to: Christie's, Post-Sale Services Department, 22nd Floor Alexandra House, 18 Chater Road, Central, Hong Kong.

(e) For more information please contact our Post-Sale Services Department by phone on +852 2760 1766 or email to postsaleasia@christies.com.

2 TRANSFERRING OWNERSHIP TO YOU

You will not own the **lot** and ownership of the **lot** will not pass to you until we have received full and clear payment of the **purchase price**, even in circumstances where we have released the **lot** to the buyer.

3 TRANSFERRING RISK TO YOU

The risk in and responsibility for the **lot** will transfer to you from whichever is the earlier of the following:

- (a) When you collect the **lot**; or
- (b) At the end of the 30th day following the date of the auction or, if earlier, the date the **lot** is taken into care by a third party warehouse as set out on the page headed "Storage and Collection" unless we have agreed otherwise with you in writing.

4 WHAT HAPPENS IF YOU DO NOT PAY

(a) If you fail to pay us the **purchase price** in full by the **due date**, we will be entitled to do one or more of the following (as well as enforce our rights under paragraph F5 and any other rights or remedies we have by law):

- (i) to charge interest from the **due date** at a rate of 7% a year above the 3-month HIBOR rate from time to time on the unpaid amount due;
- (ii) we can cancel the sale of the **lot**. If we do this, we may sell the **lot** again, publically or privately on such terms we shall think necessary or appropriate, in which case you must pay us any shortfall between the **purchase price** and the proceeds from the resale. You must also pay all costs, expenses, losses, damages and legal fees we have to pay or may suffer and any shortfall in the seller's commission on the resale;
- (iii) we can pay the seller an amount up to the net proceeds payable in respect of the amount bid by your default in which case you acknowledge and understand that Christie's will have all of the rights of the seller to pursue you for such amounts;
- (iv) we can hold you legally responsible for the **purchase price** and may begin legal proceedings to recover it together with other losses, interest, legal fees and costs as far as we are allowed by law;
- (v) we can take what you owe us from any amounts which we or any company in the **Christie's Group** may owe you (including any deposit or other part-payment which you have paid to us);
- (vi) we can, at our option, reveal your identity and contact details to the seller;
- (vii) we can reject at any future auction any bids made by you or on your behalf or to obtain a deposit from you before accepting any bids;
- (viii) to exercise all the rights and remedies of a person holding security over any property in our possession owned by you, whether by way of pledge, security interest or in any other way as permitted by the law of the place where such property is located. You will be deemed to have granted such security to us and we may retain such property as collateral security for your obligations to us; and
- (ix) we can take any other action we see necessary or appropriate.

(b) If you owe money to us or to another **Christie's Group** company, we can use any amount you do pay, including any deposit or other part-payment you have made to us, or which we owe you, to pay off any amount you owe to us or another **Christie's Group** company for any transaction.

(c) If you make payment in full after the **due date**, and we choose to accept such payment we may charge you storage and transport costs from the date that is 31 calendar days following the auction in accordance with paragraphs Gd(i) and (ii). In such circumstances paragraph Gd(iv) shall apply.

5 KEEPING YOUR PROPERTY

If you owe money to us or to another **Christie's Group** company, as well as the rights set out in F4 above, we can use or deal with any of your property we hold or which is held by another **Christie's Group** company in any way we are allowed to by law. We will only release your property to you after you pay us or the relevant **Christie's Group** company in full for what you owe. However, if we choose, we can also sell your property in any way we think appropriate. We will use the proceeds of the sale against any amounts you owe us and we will pay any amount left from that sale to you. If there is a shortfall, you must pay us any difference between the amount we have received from the sale and the amount you owe us.

G COLLECTION AND STORAGE

(a) We ask that you collect purchased lots promptly following the auction (**but note that you may not collect any lot until you have made full and clear payment of all amounts due to us**).

(b) For information on collecting lots, Please contact Christie's Post-Sale Services Department on +852 2760 1766 / Email: postsaleasia@christies.com

(c) If you do not collect any **lot** promptly following the auction we can, at our option, remove the **lot** to another Christie's location or an affiliate or third party warehouse.

(d) If you do not collect a **lot** by the end of the 30th day following the date of the auction, unless otherwise agreed in writing:

- (i) we will charge you storage costs from that date.
- (ii) we can, at our option, move the **lot** to or within an affiliate or third party warehouse and charge you transport costs and administrative fees for doing so.
- (iii) we may sell the **lot** in any commercially reasonable way we think appropriate.
- (iv) the storage terms which can be found at www.christies.com/storage shall apply.
- (v) nothing in this paragraph is intended to limit our rights under paragraph F4.

H TRANSPORT AND SHIPPING

1 TRANSPORT AND SHIPPING

We will enclose a transport and shipping form with each invoice sent to you. You must make all transport and shipping arrangements. However, we can arrange to pack, transport and ship your property if you ask us to and pay the costs of doing so. We recommend that you ask us for an **estimate**, especially for any large items or items of high value that need professional packing before you bid. We may also suggest other handlers, packers, transporters or experts if you ask us to do so. For more information, please contact Christie's Post-Sale Services Department on +852 2760 1766 or email to postsaleasia@christies.com. We will take reasonable care when we are handling, packing, transporting and shipping a **lot**. However, if we recommend another company for any of these purposes, we are not responsible for their acts, failure to act or neglect.

2 EXPORT AND IMPORT

Any **lot** sold at auction may be affected by laws on exports from the country in which it is sold and the import restrictions of other countries. Many countries require a declaration of export for property leaving the country and/or an import declaration on entry of property into the country. Local laws may prevent you from importing a **lot** or may prevent you selling a **lot** in the country you import it into.

We will not be obliged to cancel your purchase and refund the **purchase price** if your **lot** may not be exported, imported or it is seized for any reason by a government authority. It is your responsibility to determine and satisfy the requirements of any applicable laws or regulations relating to the export or import of any **lot** you purchase.

(a) You alone are responsible for getting advice about and meeting the requirements of any laws or regulations which apply to exporting or importing any **lot** prior to bidding. If you are refused a licence or there is a delay in getting one, you must still pay us in full for the **lot**. We may be able to help you apply for the appropriate licences if you ask us to and pay our fee for doing so. However, we cannot guarantee that you will get one. For more information, please contact Christie's Post-Sale Services Department on +852 2760 1766 or email to postsaleasia@christies.com.

(b) Lots made of protected species

Lots made of or including (regardless of the percentage) endangered and other protected species of wildlife are marked with the symbol **W** in the catalogue. This material includes, among other things, ivory, tortoiseshell, crocodile skin, rhinoceros horn, whalebone certain species of coral, and rosewood. You should check the relevant customs laws and regulations before bidding on any **lot** containing wildlife material if you plan to import the **lot** into another country. Several countries refuse to allow you to import property containing these materials, and some other countries require a licence from the relevant regulatory agencies in the countries of exportation as well as importation. In some cases, the **lot** can only be shipped with an independent scientific confirmation of species and/or age and you will need to obtain these at your own cost. If a **lot** contains elephant ivory, or any other wildlife material that could be confused with elephant ivory, (for example, mammoth ivory, walrus ivory, helmeted hornbill ivory) please see further important information in paragraph (c) if you are proposing to import the **lot** into the USA. We will not be obliged to cancel your purchase and refund the **purchase price** if your **lot** may not be exported, imported or it is seized for any reason by a government authority. It is your responsibility to determine and satisfy the requirements of any applicable laws or regulations relating to the export or import of property containing such protected or regulated material.

(c) US import ban on African elephant ivory

The USA prohibits the import of ivory from the African elephant. Any **lot** containing elephant ivory or other wildlife material that could be easily confused with elephant ivory (for example, mammoth ivory, walrus ivory, helmeted hornbill ivory) can only be imported into the US with results of a rigorous scientific test acceptable to Fish & Wildlife, which confirms that the material is not African elephant ivory. Where we have conducted such rigorous scientific testing on a **lot** prior to sale, we will make this clear in the lot description. In all other cases, we cannot confirm whether a **lot** contains African elephant ivory, and you will buy that **lot** at your own risk and be responsible for any scientific test or other reports required for import into the USA at your own cost. If such scientific test is inconclusive or confirms the material is from the African elephant, we will not be obliged to cancel your purchase and refund the **purchase price**.

(d) Lots of Iranian origin

Some countries prohibit or restrict the purchase and/or import of Iranian-origin "works of conventional craftsmanship" (works that are not by a recognized artist and/or that have a function, for example: carpets, bowls, ewers, tiles, ornamental boxes). For example, the USA prohibits the import of this type of property and its purchase by US persons (wherever located). Other countries, such as Canada, only permit the import of this property in certain circumstances. As a convenience to buyers, Christie's indicates under the title of a **lot** if the **lot** originates from Iran (Persia). It is your responsibility to ensure you do not bid on or import a **lot** in contravention of the sanctions or trade embargoes that apply to you.

(e) Gold

Gold of less than 18ct does not qualify in all countries as 'gold' and may be refused import into those countries as 'gold'.

(f) Watches

Many of the watches offered for sale in this catalogue are pictured with straps made of endangered or protected animal materials such as alligator or crocodile. These **lots** are marked with the symbol **W** in the catalogue. These endangered species straps are shown for display purposes only and are not for sale. Christie's will remove and retain the strap prior to shipment from the sale site. At some sale sites, Christie's may, at its discretion, make the displayed endangered species strap available to the buyer of the **lot** free of charge if collected in person from the sale site within 1 year of the date of the sale. Please check with the department for details on a particular **lot**.

For all symbols and other markings referred to in paragraph H2, please note that **lots** are marked as a convenience to you, but we do not accept liability for errors or for failing to mark **lots**.

I OUR LIABILITY TO YOU

(a) We give no **warranty** in relation to any statement made, or information given, by us or our representatives or employees, about any **lot** other than as set out in the **authenticity warranty** and, as far as we are allowed by law, all **warranties** and other

terms which may be added to this agreement by law are excluded. The seller's **warranties** contained in paragraph E1 are their own and we do not have any liability to you in relation to those **warranties**.

(b) (i) We are not responsible to you for any reason (whether for breaking this agreement or any other matter relating to your purchase of, or bid for, any **lot**) other than in the event of fraud or fraudulent misrepresentation by us or other than as expressly set out in these conditions of sale; and

(ii) We do not give any representation, warranty or guarantee or assume any liability of any kind in respect of any **lot** with regard to merchantability, fitness for a particular purpose, description, size, quality, condition, attribution, authenticity, rarity, importance, medium, provenance, exhibition history, literature, or historical relevance. Except as required by local law, any warranty of any kind is excluded by this paragraph.

(c) In particular, please be aware that our written and telephone bidding services, Christie's LIVE™, **condition** reports, currency converter and saleroom video screens are free services and we are not responsible to you for any error (human or otherwise), omission, breakdown, or delay, unavailability, suspension or termination of any of these services.

(d) We have no **responsibility** to any person other than a buyer in connection with the purchase of any **lot**.

(e) If, in spite of the terms in paragraphs (a) to (d) or E2(i) above, we are found to be liable to you for any reason, we shall not have to pay more than the **purchase price** paid by you to us. We will not be responsible to you for any reason for loss of profits or business, loss of opportunity or value, expected savings or interest, costs, damages, or expenses.

J OTHER TERMS

1 OUR ABILITY TO CANCEL

In addition to the other rights of cancellation contained in this agreement, we can cancel a sale of a **lot** if we reasonably believe that completing the transaction is, or may be, unlawful or that the sale places us or the seller under any liability to anyone else or may damage our reputation.

2 RECORDINGS

We may videotape and record proceedings at any auction. We will keep any personal information confidential, except to the extent disclosure is required by law. However, we may, through this process, use or share these recordings with another **Christie's Group** company and marketing partners to analyse our customers and to help us to tailor our services for buyers. If you do not want to be videotaped, you may make arrangements to make a telephone or written bid or bid on Christie's LIVE™ instead. Unless we agree otherwise in writing, you may not videotape or record proceedings at any auction.

3 COPYRIGHT

We own the copyright in all images, illustrations and written material produced by or for us relating to a **lot** (including the contents of our catalogues unless otherwise noted in the catalogue). You cannot use them without our prior written permission. We do not offer any guarantee that you will gain any copyright or other reproduction rights to the **lot**.

4 ENFORCING THIS AGREEMENT

If a court finds that any part of this agreement is not valid or is illegal or impossible to enforce, that part of the agreement will be treated as being deleted and the rest of this agreement will not be affected.

5 TRANSFERRING YOUR RIGHTS AND RESPONSIBILITIES

You may not grant a security over or transfer your rights or responsibilities under these terms on the contract of sale with the buyer unless we have given our written permission. This agreement will be binding on your successors or estate and anyone who takes over your rights and responsibilities.

6 TRANSLATIONS

If we have provided a translation of this agreement, we will use the English version in deciding any issues or disputes which arise under this agreement.

7 PERSONAL INFORMATION

We will hold and process your personal information and may pass it to another **Christie's Group** company for use as described in, and in line with, our privacy policy at www.christies.com.

8 WAIVER

No failure or delay to exercise any right or remedy provided under these Conditions of Sale shall

constitute a waiver of that or any other right or remedy, nor shall it prevent or restrict the further exercise of that or any other right or remedy. No single or partial exercise of such right or remedy shall prevent or restrict the further exercise of that or any other right or remedy.

9 LAW AND DISPUTES

The rights and obligations of the parties with respect to these Conditions of Sale, the conduct of the auction and any matters connected with any of the foregoing shall be governed and interpreted by the Hong Kong laws. By bidding at auction, whether present in person or by agent, by written bid, telephone or other means, the buyer shall be deemed to have accepted these Conditions and submitted, for the benefit of Christie's, to the exclusive jurisdiction of the Hong Kong courts, and also accepted that Christie's also has the right to pursue remedies in any other jurisdiction in order to recover any outstanding sums due from the buyer.

10 REPORTING ON WWW.CHRISTIES.COM

Details of all **lots** sold by us, including **catalogue descriptions** and prices, may be reported on www.christies.com. Sales totals are **hammer price plus buyer's premium** and do not reflect costs, financing fees, or application of buyer's or seller's credits. We regret that we cannot agree to requests to remove these details from www.christies.com.

K GLOSSARY

authentic: a genuine example, rather than a copy or forgery of;

(i) the work of a particular artist, author or manufacturer, if the **lot** is described in the **Heading** as the work of that artist, author or manufacturer;

(ii) a work created within a particular period or culture, if the **lot** is described in the **Heading** as a work created during that period or culture;

(iii) a work for a particular origin source if the **lot** is described in the **Heading** as being of that origin or source; or

(iv) in the case of gems, a work which is made of a particular material, if the **lot** is described in the **Heading** as being made of that material.

authenticity warranty: the guarantee we give in this agreement that a **lot** is **authentic** as set out in section E2 of this agreement.

buyer's premium: the charge the buyer pays us along with the **hammer price**.

catalogue description: the description of a **lot** in the catalogue for the auction, as amended by any saleroom notice.

Christie's Group: Christie's International Plc, its subsidiaries and other companies within its corporate group.

condition: the physical **condition** of a **lot**.

due date: has the meaning given to it in paragraph F1(a).

estimate: the price range included in the catalogue or any saleroom notice within which we believe a **lot** may sell. **Low estimate** means the lower figure in the range and **high estimate** means the higher figure. The **mid estimate** is the midpoint between the two.

hammer price: the amount of the highest bid the auctioneer accepts for the sale of a **lot**.

Heading: has the meaning given to it in paragraph E2.

lot: an item to be offered at auction (or two or more items to be offered at auction as a group).

other damages: any special, consequential, incidental or indirect damages of any kind or any damages which fall within the meaning of 'special', 'incidental' or 'consequential' under local law.

purchase price: has the meaning given to it in paragraph F1(a).

provenance: the ownership history of a **lot**.

qualified: has the meaning given to it in paragraph E2 and **Qualified Headings** means the section headed **Qualified Headings** on the page of the catalogue headed 'Important Notices and Explanation of Cataloguing Practice'.

reserve: the confidential amount below which we will not sell a **lot**.

saleroom notice: a written notice posted next to the **lot** in the saleroom and on www.christies.com, which is also read to prospective telephone bidders and notified to clients who have left commission bids, or an announcement made by the auctioneer either at the beginning of the sale, or before a particular **lot** is auctioned.

UPPER CASE type: means having all capital letters.

warranty: a statement or representation in which the person making it guarantees that the facts set out in it are correct.

業務規定 · 買方須知

業務規定

業務規定和重要通知及目錄編列方法之說明列明佳士得拍賣刊載在本目錄中**拍賣品**的條款。

通過登記競投和 / 或在拍賣會中競投即表示您同意接受這些條款，因此，您須在競投之前仔細閱讀這些條款。下述粗體字體詞語的解釋在尾部詞匯表列明。

除非佳士得擁有**拍賣品**所有權（以 ▲ 標示），佳士得為賣方的代理人。

A. 拍賣之前

1. 拍賣品描述

(a) 目錄描述部分使用的某些詞匯有特殊意義。詳情請見構成條款部分的重要通知及目錄編列方法之說明。對目錄內的標識的解釋，請見本目錄內“本目錄中使用的各類標識”。

(b) 本公司在本目錄中對任何**拍賣品**的描述，**拍賣品狀況**報告及其它陳述（不管是口頭還是書面），包括**拍賣品**性質或**狀況**、藝術家、時期、材料、概略尺寸或**來源**均屬我們意見之表述；而不應被作為事實之陳述。我們不像專業的歷史學家及學者那樣進行深入的專業。所有的尺寸及重量僅為粗略估計。

2. 對於**拍賣品**描述佳士得所負的責任

我們不對**拍賣品**的性質提供任何保證，除了下述第 E2 段的**真品保證**以及第 I 段另有約定。

3. 狀況

(a) 在我們拍賣會上拍賣的**拍賣品狀況**可因年代、先前損壞、修復、修理及損耗等因素而差異甚大。其性質即意味著幾乎不可能處於完美的**狀況**。**拍賣品**是按照其在拍賣之時的情況以“現狀”出售，而且不包括佳士得或賣方的任何陳述或保證或對於**狀況**的任何形式的責任承擔。

(b) 在本目錄條目或**狀況**報告中提及**狀況**不等同於對**狀況**的完整描述，圖片可能不會清晰展示出**拍賣品**。**拍賣品**的色彩和明暗度在印刷品或屏幕上看起來可能會與實體檢查時的情況不同。**狀況**報告可協助您評估**拍賣品**的**狀況**。為方便買方，**狀況**報告為免費提供，僅作為指引。**狀況**報告提供了我們的意見，但是可能未指出所有的缺陷、內在瑕疵、修復、更改及改造，因為我們的僱員不是專業修復或維護人員。出於這個原因，他們不能替代您親自檢查**拍賣品**或您自己尋求的專業意見。買方有責任確保自己已經要求提供、收悉及考慮了任何**狀況**報告。

4. 拍賣之前檢查**拍賣品**

(a) 如果您計劃競投一件**拍賣品**，應親自或通過具有專業知識之代表檢視，以確保您接受**拍賣品**描述及**狀況**。我們建議您從專業修復人員或其它專業顧問那裏索取意見。

(b) 拍賣之前的檢視免費向公眾開放。在拍賣之前的檢視或通過預約，我們的專家可在場回答問題。

5. 估價

估價是基於**拍賣品**的**狀況**、稀有程度、質量、**來源**及類似物品的近期拍價決定。**估價**可能會改變。您或任何其他人在任何情況下都不可能依賴**估價**，將其作為**拍賣品**的實際售價的預測或保證。**估價**不包括買方酬金或任何適用的稅費。**估價**可能以拍賣場當地貨幣以外的貨幣顯示並僅作指引。本目錄使用的貨幣兌換率是根據最貼近目錄付印時的兌換率設定，所以可能與拍賣當日兌換率有差別。

6. 撤回

佳士得有權單方面決定在**拍賣品**拍賣過程中或拍賣之前的任何時間將**拍賣品**撤回。佳士得無須就任何撤回決定向您承擔責任。

7. 珠寶

(a) 有色寶石（如紅寶石、藍寶石及綠寶石）可能經過處理以改良外觀，包括加熱及上油等方法。這些方法都被國際珠寶行業認可，但是經處理的寶石的硬度可能會降低及 / 或在日後需要特殊的保養。

(b) 所有類型的寶石均可能經過某些改良處理。如果某件**拍賣品**沒有報告，您可以在拍賣日之前至少提前三周向我們要求寶石鑒定報告，報告的費用由您支付。

(c) 我們不會為每件拍賣的寶石拿取鑒定報告。若我們有從國際認可的寶石鑒定實驗室取得鑒定報告，我們會在目錄中提及。從美國寶石鑒定實驗室發出的鑒定報告會描述對寶石的改良或處理。歐洲寶石鑒定實驗室的報告僅在我們要求的時候，才會提及對寶石的改良及處理，但是該報告會確認該寶石沒有被改良或處理。因各實驗室使用方法和技術的差異，對某寶石是否處理過、處理的程度或處理是否為永久性，都可能持不同意見。寶石鑒定實驗室僅對報告作出日之前實驗室所知悉的改進及處理進行報告。

(d) 對於珠寶銷售來說，**估價**是以寶石鑒定報告中的信息為基礎，如果沒有報告，就會認為寶石可能已經被處理或提升過。

8. 鐘錶

(a) 幾乎所有的鐘錶在使用期內都被修理過，可能都含有非原裝零部件。我們不能**保證**任何鐘錶的任何個別零部件都是原裝。被陳述為“關聯”字樣的錶帶不是原裝錶的部分，可能不是**真品**。拍賣的鐘可能跟隨沒有鐘擺、鐘錘或鑰匙出售。

(b) 收藏家等級的鐘錶經常有非常精細複雜的機械構造，可能需要一般保養服務、更換電池或進一步的修理工作，而這些都由買方負責。我們不**保證**每一隻鐘錶都是在良好運作狀態。除非目錄中有提及，我們不提供證書。

(c) 大多數的錶都被打開過查看機芯的型號及質量。因為這個原因，帶有防水錶殼的錶可能不能防水，在使用之前我們建議您讓專業鐘錶師事先檢驗。

手錶及錶帶的拍賣及運送方面的重要信息，請見第 H2(f) 段。

B. 登記競投

1. 新競投人

(a) 如果這是您第一次在佳士得競投，或者您曾參與我們的拍賣，但在過去兩年內未曾從任何佳士得拍賣場成功競投過任何東西，您必須在拍賣之前至少 48 個小時登記，以給我們足夠的時間來處理及批准您的登記。我們有權單方面不允許您登記成為競投人。您需提供以下資料：

(i) 個人客戶：帶有照片的身份證明（駕照執照、國民身份證或護照）及（如果身份證文件上沒有顯示現時住址資料）現時住址證明，如：用事業帳單或銀行月結單。

(ii) 公司客戶：顯示名稱及註冊地址的公司註冊證明或類似文件，公司地址證明，被授權競投者附有相片的身份證文件，由法定代表人簽署及蓋有公司章（若有）的競投授權書，以及列出所有董事和受益股東的文件證明。

(iii) 信托、合夥、離岸公司及其它業務結構，請提前聯繫我們商談要求。

(b) 我們可能要求您向我們提供財務證明及 / 或押金作為許可您競投的條件。如需幫助，請聯繫我們的客戶服務部：+852 2760 1766。

2. 再次參與競投的客人

我們可選擇要求您提供以上 B1(a) 段所提及的現時身份證明，財務證明及 / 或押金作為許可您競投的條件。如果您過去兩年中沒有從我們的拍賣會成功投得**拍賣品**，或者您本次擬出價金額高於過往，請聯繫我們的投標部：+852 2978 9910 或電郵至 bidsasia@christies.com。

3. 如果您未能提供正確的文件

如果我們認為，您未能滿足我們對競投者身份及登記手續的要求，包括但不限於完成及滿足本公司可能要求進行的所有反洗黑錢和 / 或反恐佈主義財政審查，我們可能會不允許您登記競投，而如果您成功投得**拍賣品**，我們可能撤銷您與賣方之間的買賣合約。佳士得有權單方面決定所須的身份證明文件類別，作為滿足我們對競投者身份及登記手續的要求。

4. 代表他人競投

(a) **作為授權競投人**：如果您代表他人競投，在競投前，委託人需要完成以上的登記手續及提供已簽署的授權書，授權您代表其競投。

(b) **作為隱名委托人的代理人**：如果您以代理人身份為隱名委托人（最終的買方）進行競投，您同意承擔支付購買款項和所有其他應付款項的個人責任。並且，您保證：

- (i) 您已經根據所有適用的反洗黑錢及制裁法律對**拍賣品**的最終的買方進行必要的客戶盡職調查，同意我們依賴該盡職調查。並且，您將在不少於 5 年的期間裏保存證明盡職調查的文件和記錄。
- (ii) 您在收到我們書面要求後可以將證明盡職調查的文件和記錄立即提供給獨立第三方審計人員即時查閱。我們不會向任何第三方披露上述文件和記錄，除非 (1) 它已經在公共領域存在，(2) 根據法律要求須被披露，(3) 符合反洗黑錢法律規定。
- (iii) 您和最終的買方之間的安排不是為了便於任何涉稅犯罪。
- (iv) 您不知曉並且沒有理由懷疑用於結算的資金和任何犯罪收入有關或最終的買方因洗黑錢，恐怖活動或其他基於洗黑錢的犯罪而被調查，被起訴或被定罪。

除非競投人和佳士得在拍賣開始前書面同意競投人僅作為佳士得認可並指定的第三方的代理參與競投並且佳士得只會向該指定第三方收取付款，競投人同意繳付**購買款項**和所有其他應付款項負上個人法律責任。

5. 親自出席競投

如果您希望在拍賣現場競投，必須在拍賣舉行前至少 30 分鐘辦理登記手續，並索取競投號碼牌。如需協助，請聯繫客戶服務部：+852 2760 1766。

6. 競投服務

下述的競投服務是為方便客戶而設，如果在提供該服務出現任何錯誤（人為或其它），遺漏或故障，佳士得均不負上任何責任。

(A) 電話競投

您必須在拍賣開始前至少 24 小時辦理申請電話競投。佳士得只會在能夠安排人員協助電話競投的情況下接受電話競投。估價低於港幣 30,000 元之**拍賣品**將不接受電話競投。若需要以英語外的其他語言進行競投，須儘早在拍賣之前預先安排。電話競投將可被錄音。以電話競投即代表您同意其對話被錄音。您同意電話競投受業務規定管限。

(B) 在 Christie's LIVE™ 網絡競投

在某些拍賣會，我們會接受網絡競投。請登入 www.christies.com/livebidding，點擊“現場競投”圖標，瞭解如何從電腦聆聽及觀看拍賣及參與競投。網絡競投受業務規定及 Christie's Live™ 使用條款的管限，詳情請見 www.christies.com 網站。

(C) 書面競投

您可於本目錄，任何佳士得辦公室或通過 www.christies.com 選擇拍賣並查看**拍賣品**取得書面競投表格。您必須在拍賣開始前至少 24 小時提交已經填妥的書面競投表格。投標必須是以拍賣會當地的貨幣為單位。拍賣官將在參考**底價**後，合理地履行書面競投務求以可能的最低價行使書面標。如果您以書面競投一件沒有**底價**的**拍賣品**，而且沒有其他更高叫價，我們會為您以**低端估價**的 50% 進行競投；如果您的書面標比上述更低，則以您的書面標的價格進行競投。如佳士得收到多個競投標的書面競投，而在拍賣時此等競投價乃該**拍賣品**之最高出價，則該**拍賣品**售給最先送達其書面競投書給本公司之競投人。

C. 拍賣之時

1. 進入拍賣現場
我們有權不允許任何人進入拍賣場地，參與拍賣，亦可拒絕接受任何競投。

2. 底價

除非另外列明，所有**拍賣品**均有**底價**。不**有底價**的**拍賣品**，在**拍賣品**號碼旁邊用“標記”。**底價**不會高於**拍賣品**的**低端估價**。

3. 拍賣官之酌情權

拍賣官可以酌情選擇：

(a) 拒絕接受任何競投；

(b) 以其決定方式將競投提前或拖後，或改變**拍賣品**的順序；

(c) 撤回任何**拍賣品**；

(d) 將任何**拍賣品**分開拍賣或將兩件或多件**拍賣品**合併拍賣；

(e) 重開或繼續競投，即便已經下槌；

(f) 如果有出錯或爭議，無論是在拍賣時或拍賣後，選擇繼續拍賣、決定誰是成功競投人、取消**拍賣品**的拍賣或將**拍賣品**重新拍賣或出售。在拍賣之時或後對競投有任何爭議，拍賣官有最終決定權。

4. 競投

拍賣官接受以下競投：

(a) 拍賣會場參與競投的競投人；

(b) 從電話競投人，通過 Christie's LIVE™（如第 B6 部分所示）透過網絡競投的競投人；

(c) 拍賣之前提交佳士得的書面競投（也稱為不在場競投或委托競投）。

5. 代表賣方競投

拍賣官可選擇代表賣方競投的方式連續競投或以回應其他競投者的投標而競投的方式，直至達到**底價**以下。拍賣官不會特別指明此乃代表賣方的競投。拍賣官不會代表賣方作出相等於或高於**底價**之出價。就不設**底價**的**拍賣品**，拍賣官通常會以**低端估價**的 50% 開始拍賣。如果在此價位沒有人競投，拍賣官可以自行斟酌將價格下降繼續拍賣，直至有人競投，然後從該價位向上拍賣。如果無人競投該**拍賣品**，拍賣官可視該**拍賣品**為流拍**拍賣品**。

6. 競投價遞增幅度

競投通常從低於**低端估計**開始，然後逐步增加（競投價遞增幅度）。拍賣官會自行決定競投開始價位及遞增幅度。本目錄內的書面競投表格上顯示的是一般遞增幅度，僅供閣下參考。

7. 貨幣兌換

拍賣會的顯示板，Christie's LIVE™ 和佳士得網站可能會以拍賣會當地貨幣外的主要貨幣來展示競投。任何佳士得使用的兌換率僅作指引，佳士得並不受其約束。對於在提供該服務出現的任何錯誤（人為或其它），遺漏或故障，佳士得並不負責。

8. 成功競投

除非拍賣官決定使用以上 C3 段中的酌情權，拍賣官下槌即表示對最終競投價之接受。這代表賣方和成功競投人之間的買賣合約之訂立。我們僅向已登記的成功競投人開具發票。拍賣後我們會以郵寄及/或電子郵件方式發送發票，但我們並不負責通知閣下競投是否成功。如果您以書面競投，拍賣後

您應儘快以電話聯繫我們或親臨本公司查詢競投結果，以避免產生不必要的倉儲費用。

9. 競投地法律

當您在我們的拍賣中競投時，您同意您會嚴格遵守所有在拍賣時生效並適用於相關拍賣場所的當地法律及法規。

D. 買方酬金及稅款

1. 買方酬金

成功競投人除支付**成交價**外，亦同意支付本公司以該**拍賣品成交價**計算的**買方酬金**。酬金費率按每件**拍賣品成交價**首港幣 2,000,000 元之 25%；加逾港幣 2,000,000 元以上至港幣 30,000,000 元部分之 20%；加逾港幣 30,000,000 元以上之 12.5% 計算。

2. 稅費

成功競投者將負責所有適用**拍賣品**稅費，包括增值稅，銷售或補償使用稅費或者所有基於**成交價**和**買方酬金**而產生的該等稅費。買方有責任查明並支付所有應付稅費。在任何情況下香港法律先決適用。佳士得建議您徵詢獨立稅務意見。

有關佳士得運送至美國的**拍賣品**，不論買方國籍或公民身份，均可能須支付基於**成交價**，**買方酬金**和運費而產生的州銷售稅或使用稅費。佳士得現時須就其運送至紐約州的**拍賣品**收取銷售稅。適用銷售稅率由**拍賣品**將運送到的州分，縣，地點而決定。要求豁免銷售稅的成功競投人必須在提取**拍賣品**之前向佳士得提供適當文件。佳士得不須收取稅費的州分，成功競投人可能須繳付稅費予該州分的稅務機構。佳士得建議您徵詢獨立稅務意見。

E. 保證

1. 賣方保證

對於每件**拍賣品**，賣方保證其：

- (a) 為**拍賣品**的所有人，或**拍賣品**的共有人之一並獲得其他共有人的許可；或者，如果賣方不是**拍賣品**的所有人或共有人之一，其已獲得所有人的授權出售**拍賣品**或其法律上有權這麼做；
- (b) 有權利將**拍賣品**的所有權轉讓給買方，且該權利不負擔任何限制或任何其他人之索賠權。

如果以上任何保證不確實，賣方不必支付超過您已向我們支付的**購買款項**（詳見以下第 F1(a) 段定義）的金額。賣方不會就閣下利潤上或經營的損失、預期存款、商機喪失或利息的損失、成本、賠償金、其他賠償或支出承擔責任。賣方不就任何**拍賣品**提供任何以上列舉之外的保證；只要法律許可，所有賣方對您做出的保證及法律要求加入本協議的所有其它賣方責任均被免除。

2. 真品保證

在不抵觸以下條款的情況下，本公司保證我們拍賣的**拍賣品**都是**真品**（我們的“**真品保證**”）。如果在拍賣日後的五年內，您通知我們您的**拍賣品**不是**真品**，在符合以下條款規定之下，我們將把您支付的**購買款項**退還給您。

業務規定的詞匯表裏有對“**真品**”一詞做出解釋。**真品保證**條款如下：

- (a) 我們對在拍賣日後 5 年內提供的申索通知提供**真品保證**。此期限過後，我們不再提供**真品保證**。

- (b) 我們只會對本目錄描述第一行（“標題”）以大階字體注明的資料作出**真品保證**。除了標題中顯示的資料，我們不對任何標題以外的資料（包括標題以外的大階字體注明）作出任何保證。
- (c) **真品保證**不適用於有保留標題或有保留的部分標題。有保留是指受限於拍賣品目錄描述內的解釋，或者標題中有“重要通告及目錄編列方法之說明”內有保留標題的某些字眼。例如：標題中對“認為是…之作品”的使用指佳士得認為拍賣品可能是某位藝術家的作品，但是佳士得不保證該作品一定是該藝術家的作品。在競投前，請閱畢“有保留標題”列表及拍賣品的目錄描述。
- (d) **真品保證**適用於被拍賣會通告修訂後的標題。
- (e) **真品保證**不適用於在拍賣之後，學術發展導致被普遍接受的學者或專家意見有所改變。此保證亦不適用於在拍賣日時，標題乎合被普遍接受的學者或專家的意見，或標題指出意見衝突的地方。
- (f) 如果拍賣品只有通過科學鑒定方法才能鑒定出不是**真品**，而在我們出版目錄之日，該科學方法還未存在或未被普遍接納，或價格太昂貴或不實際，或者可能損壞拍賣品，則**真品保證**不適用。
- (g) **真品保證**僅適用於拍賣品在拍賣時由佳士得發出之發票之原本買方，且僅在申索通知做出之日原本買方是拍賣品的唯一所有人，且拍賣品不受其他申索權、權利主張或任何其他制約的限制。此**真品保證**中的利益不可以轉讓。
- (h) 要申索**真品保證**下的權利，您必須：
- 在拍賣日後 5 年內，向我們提供書面的申索通知。我們可以要求您提供上述申索完整的細節及佐證證據；
 - 佳士得有權要求您提供為佳士得及您均事先同意的在此拍賣品領域被認可的兩位專家的書面意見，確認該拍賣品不是**真品**。如果我們有任何疑問，我們保留自己支付費用獲取更多意見的權利；及
 - 自費交回與拍賣時狀況相同的拍賣品給佳士得拍賣場。
- (i) 您在本**真品保證**下唯一的權利就是取消該項拍賣及取回已付的**購買款項**。在任何情況下我們不須支付您超過您已向我們支付的**購買款項**的金額，同時我們也無須對任何利潤或經營損失、商機或價值喪失、預期存款或利息、成本、賠償金或其他賠償或支出承擔責任。
- (j) **書籍**。如果拍賣品為書籍，我們提供額外自拍賣日起為期 14 天的**保證**，如經校對後，拍賣品的文本或圖標存有瑕疵，在以下條款的規限下，我們將退回已付的**購買款項**：
- 此額外**保證**不適用於：
 - 缺少空白頁、扉頁、保護頁、廣告、及書籍鑲邊的破損、污漬、邊緣磨損或其它不影響文本及圖標完整性的瑕疵；
 - 繪圖、簽名、書信或手稿；帶有簽名的照片、音樂唱片、地圖冊、地圖或期刊；
 - 沒有標題的書籍；
 - 沒有標明估價的已出售拍賣品；
 - 目錄中表明售出後不可退貨的書籍；
 - 狀況報告中或拍賣時公告的瑕疵。

- (b) 要根據本條規定申索權利，您必須在拍賣後的 14 天內就有關瑕疵提交書面通知，並交回與拍賣時狀況相同的**拍賣品**給當時進行拍賣的佳士得拍賣行。
- (k) 東南亞現代及當代藝術以及中國書畫。**真品保證**並不適用於此類別**拍賣品**。目前學術界不容許對此類別作出確實之說明，但佳士得同意取消被證實為贗品之東南亞現代及當代藝術以及中國書畫**拍賣品**之交易。已付之**購買款項**則根據佳士得**真品保證**的條款退還予原本買方，但買方必須在拍賣日起 12 個月內以書面通知本公司有關**拍賣品**為贗品並能按以上 E2(h)(ii) 的規定提供令佳士得滿意的證據，證實該**拍賣品**為贗品，及須按照以上 E2(h)(iii) 規定交回**拍賣品**給我們。E2(b), (c), (d), (e), (f), (g) 和 (i) 適用於此類別之申索。

F. 付款

1. 付款方式

- (a) 拍賣後，您必須立即支付以下**購買款項**：
- 成交價；和
 - 買方酬金；和
 - 任何關稅、有關貨物、銷售、使用、補償或服務稅項。

所有款項須於拍賣後 7 個日曆天內悉數付清（“到期付款日”）。

- (b) 我們只接受登記競投人付款。發票一旦開具，發票上買方的姓名不能更換，我們亦不能以不同姓名重新開具發票。即使您欲將**拍賣品**出口且需要出口許可證，您也必須立即支付以上款項。
- (c) 在香港佳士得購買的**拍賣品**，您必須按照發票上顯示的貨幣以下列方式支付：
- 佳士得通過“MyChristie’s”網上賬戶為客人提供查看發票、付款及運送服務。您可直接登錄查詢（如您還未註冊線上賬戶，請登錄 www.christies.com/MyChristies 進行註冊）。本服務適用於大多數**拍賣品**，但仍有少數**拍賣品**的付款和運送安排不能通過網上進行。如需協助，請與售後服務部聯絡。
 - 電匯至：

香港上海匯豐銀行總行
香港中環皇后大道中 1 號
銀行編號：004
賬號：062-305438-001
賬名：Christie’s Hong Kong Limited
收款銀行代號：HSBCHKHHHKH
 - 信用卡

在符合我們的規定下，我們接受各種主要信用卡付款。本公司每次拍賣接受總數不超過港幣 3,000,000 元之現場信用卡付款，但有關係款及限制適用。以中國銀聯支付方式沒有金額限制。如要以“持卡人不在場” (CNP) 的方式支付，本公司每次拍賣接受總數不超過港幣 3,000,000 元之付款。CNP 付款不適用於所有佳士得拍賣場，並受某些限制。適用於信用卡付款的條款和限制可從佳士得的售後服務部獲取，詳情列於以下 (d) 段：
 - 現金

本公司每年只接受每位買方總數不超過港幣 80,000 元之現金付款（須受有關條件約束）；
 - 銀行匯票

抬頭請注明「佳士得香港有限公司」（須受有關條件約束）；

(vi) 支票

- 抬頭請注明「佳士得香港有限公司」。支票必須於香港銀行承兌並以港幣支付。
- (d) 支付時請注明拍賣號碼、發票號碼及客戶號碼；以郵寄方式支付必須發送到：佳士得香港有限公司，售後服務部（地址：香港中環遮打道 18 號歷山大廈 22 樓）。
- (e) 如要瞭解更多信息，請聯繫售後服務部。電話 +852 2760 1766；或發電郵至 postsaleasia@christies.com。

2. 所有權轉移

只有我們自您處收到全額且清算**購買款項**後，您才擁有**拍賣品**及**拍賣品**的所有權，即使本公司已將**拍賣品**交給您。

3. 風險轉移

拍賣品的風險和責任自以下日期起將轉移給您（以較早者為準）：

- 買方提貨日；
- 自拍賣日起 30 日後，如較早，則**拍賣品**根據“倉儲與提取”頁由第三方倉庫保管之日起；除非另行協議。

4. 不付款之補救辦法

- (a) 如果到期付款日，您未能全數支付**購買款項**，我們將有權行使以下一項或多項（及執行我們在 F5 段的權利以及法律賦予我們的其它權利或補救辦法）：
- 自到期付款日起，按照尚欠款項，收取高於香港金融管理局不時公布的三個月銀行同業拆息加 7% 的利息；
 - 取消交易並按照我們認為合適的條件對**拍賣品**公開重新拍賣或私下重新售賣。您必須向我們支付原來您應支付的**購買款項**與再次轉賣收益之間的差額。您也必須支付我們必須支付或可能蒙受的一切成本、費用、損失、賠償、法律費用及任何賣方酬金的差額；
 - 代不履行責任的買方支付賣方應付的**拍賣淨價**金額。您承認佳士得有賣方之所有權利向您提出追討；
 - 您必須承擔尚欠之**購買款項**，我們可就取回此金額而向您提出法律訴訟程序及在法律許可下向您索回之其他損失、利息、法律費用及其他費用；
 - 將我們或佳士得集團任何公司欠下您之款項（包括您已付給我們之任何保證金或部分付款）用以抵銷您未付之款項；
 - 我們可以選擇將您的身份及聯繫方式披露給賣方；
 - 在將來任何拍賣中，不允許您或您的代表作出競投，或在接受您競投之前向您收取保證金；
 - 在**拍賣品**所處地方之法律許可之下，佳士得就您擁有並由佳士得管有的**拍賣品**作為抵押品並以抵押品持有人身份行使最高程度之權利及補救方法，不論是以典當方式、抵押方式或任何其他形式。您則被視為已授與本公司該等抵押及本公司可保留或售賣此物品作為買方對本公司及賣方的附屬抵押責任；和
 - 採取我們認為必要或適當的任何行動。

- (b) 將您已付的款項，包括保證金及其他部份付款或我們欠下您之款項用以抵銷您欠我們或其他佳士得集團公司的款項。
- (c) 如果您在到期付款日之後支付全部款項，同時，我們選擇接受該付款，我們可以自拍賣後第 31 日起根據 G(d)(i) 及 (ii) 段向您收取倉儲和運輸費用。在此情況下，G(d)(iv) 段將適用。

5. 扣押拍賣品

如果您欠我們或其他佳士得集團公司款項，除了以上 F4 段的權利，在法律許可下，我們可以以任何方式使用或處置您存於我們或其它佳士得集團公司的拍賣品。只有在您全額支付欠下我們或相關佳士得集團公司的全部款項後，您方可領取有關拍賣品。我們亦可選擇將您的拍賣品按照我們認為適當的方式出售。我們將用出售拍賣品的銷售所得來抵銷您欠下我們的任何款項，並支付您任何剩餘部分。如果銷售所得不足以抵銷，您須支付差額。

G. 提取及倉儲

- (a) 我們要求您在拍賣之後立即提取您購買的拍賣品（但請注意，在全數付清所有款項之前，您不可提取拍賣品）。
- (b) 有關提取拍賣品之詳情，請聯繫售後服務部。電話 +852 2760 1766 或發電郵至：postsaleasia@christies.com
- (c) 如果您未在拍賣完畢立即提取您購買的拍賣品，我們有權將拍賣品移送到其他佳士得所在處或其關聯公司或第三方倉庫。
- (d) 如果您未在拍賣後第三十個日曆日或之前提取您購買的拍賣品，除非另有書面約定：
- (i) 我們將自拍賣後第 31 日起向您收取倉儲費用。
- (ii) 我們有權將拍賣品移送到關聯公司或第三方倉庫，並向您收取因此產生的運輸費用和處理費用。
- (iii) 我們可以按我們認為商業上合理且恰當的方式出售拍賣品。
- (iv) 倉儲的條款適用，條款請見 www.christies.com/storage。
- (v) 本段的任何內容不限制我們在 F4 段下的權利。

H. 運送

1. 運送

運送或付運表格會與發票一同發送給您。您須自行安排拍賣品的運送和付運事宜。我們也可以依照您的要求安排包裝運送及付運事宜，但您須支付有關收費。我們建議您在競投前預先查詢有關收費的估價，尤其是需要專業包裝的大件物品或高價品。應您要求，我們也可建議處理員、包裝、運輸公司或有關專家。

詳情請聯繫佳士得售後服務部，電話：+852 2760 1766；或發郵件至 postsaleasia@christies.com。我們會合理謹慎處理、包裝、運輸拍賣品。若我們就上述目的向您推薦任何其他公司，我們不會承擔有關公司之行為，遺漏或疏忽引致的任何責任。

2. 出口 / 進口

拍賣售出的任何拍賣品都可能受拍賣品售出國家的出口法律及其他國家的進口法律限制。許多國家就拍賣品出境要求出口聲明及 / 或就拍賣品入境要求進口聲明。進口國當

地法律可能會禁止進口某些拍賣品或禁止拍賣品在進口國出售。

我們不會因您所購買的拍賣品無法出口，進口或出於任何原因遭政府機構沒收而有責任取消您的購買或向您退換購買款項。您應負責確認並滿足任何法律或法規對出口或進口您購買的拍賣品的要求。

(a) 在競投前，您應尋求專業意見並負責滿足任何法律或法規對出口或進口拍賣品的要求。如果您被拒發許可證，或申請許可證延誤，您仍須全數支付拍賣品的價款。如果您提出請求，在我們能力範圍許可內，我們可以協助您申請所需許可證，但我們會就此服務向您收取費用。我們不保證必能獲得許可證。如欲了解詳情，請聯繫佳士得售後服務部，電話：+852 2760 1766 或發郵件至 postsaleasia@christies.com。

(b) 含有受保護動植物物的拍賣品

由瀕臨絕種及其他受保護野生動植物製造或組成（不論分比率）的拍賣品在本目錄中註有 [~] 號。

這些物料包括但不限於象牙、玳瑁殼、鱷魚皮、犀牛角、鯨骨、某些珊瑚品種及玫瑰木。若您有意將含有野生動物物料的任何拍賣品進口至其他國家，您須於競投該拍賣品之前了解有關海關法例和規定。有些國家完全禁止含有這類物料的物品進口，而其他國家則規定須向出口及入口國家的有關管理機構取得許可證。在有些情況下，拍賣品必須附有獨立的物種的科學證明和 / 或年期證明，方能裝運，而您須要自行安排上述證明並負責支付有關的費用。如果一件拍賣品含有象牙或其他可能和象牙相混淆的野生動物材料（例如猛犸象牙，海象象牙和犀鳥象牙）且您計劃將上述拍賣品進口到美國，請查看 (c) 段中之重要信息。如果您無法出口，進口該拍賣品或因任何原因拍賣品被政府部門查收，我們沒有義務因此取消您的交易並退回您的購買款項。您應負責確認並滿足有關含有上述物料拍賣品進出口的法律和規例要求。

(c) 美國關於非洲象象牙的進口禁令

美國禁止非洲象象牙進口美國。如果一件拍賣品含有象牙或其他可能和象牙相混淆的野生材料（例如猛犸象牙，海象象牙和犀鳥象牙），其必須通過受美國漁業和野生動物保護局認可的嚴格科學測試確認該物料非非洲象象牙後方可進口美國。如果我們在拍賣前對拍賣品已經進行了該嚴格科學測試，我們會在拍賣品陳述中清楚表明。我們一般無法確認相關拍賣品的象牙是否來自非洲象。您凡購買有關拍賣品並計畫將有關拍賣品進口美國，必須承擔風險並負責支付任何科學測試或其他報告的費用。有關測試並無定論或確定物料乃非洲象象牙，不被視為取消拍賣和退回購買款項的依據。

(d) 源自伊朗的拍賣品

一些國家禁止或限制購買和 / 或進口源自伊朗的“傳統工藝作品”（身份不明確的藝術家作品及 / 或功能性作品。例如：地毯、碗、大口水壺、瓷磚和裝飾盒）。美國禁止進口以上物品亦禁止美國民眾（不論所在處）購買以上物品。有些國家，例如加拿大則允許在某特定

情況下可以進口上述物品。為方便買方，佳士得在源自伊朗（波期）的拍賣品下方特別注明。如您受以上制裁或貿易禁運限制，您須確保您不會競投或進口有關拍賣品，違反有關適用條例。

(e) 黃金

含量低於 18k 的黃金並不是在所有國家均被視為“黃金”，並可能被拒絕入口。

(f) 鐘錶

本目錄內有些錶帶的照片顯示該手錶配有瀕危及受保護動物（如短吻鱷或鱷魚）的物料所製成的錶帶。這些拍賣品在本目錄內的拍賣品編號旁以 Ψ 符號顯示。這些錶帶只用來展示拍賣品並不作銷售用途。在運送手錶到拍賣地以外的地點前，佳士得會把上述錶帶拆除並予以保存。買方若在拍賣後一年內親身到拍賣所在地的佳士得提取，佳士得可酌情免費提供該展示用但含有瀕危及受保護動物物料的錶帶給買方。

H2 段中的標記是佳士得為了方便閣下而在有關拍賣品附加的，附加標記時如有任何錯誤或遺漏，佳士得恕不承擔任何責任。

I. 佳士得之法律責任

- (a) 除了真品保證，佳士得、佳士得代理人或僱員，對任何拍賣品作任何陳述，或資料的提供，均不作出任何保證。在法律容許的最大程度上，所有由法律附加的保證及其他條款，均被排除在本協議外。在 E1 段中的賣方保證是由賣方提供的保證，我們對這些保證不負有任何責任。
- (b) (i) 除非我們以欺詐手段作出有欺詐成份的失實陳述或在本業務規定中另有明確說明，我們不會因任何原因對您負有任何責任（無論是因違反本協議，購買拍賣品或與競投相關的任何其它事項）；和 (ii) 本公司無就任何拍賣品的可銷售品質、是否適合其特定用途、描述、尺寸、質量、狀況、作品歸屬、真實性、稀有程度、重要性、媒介、來源、展覽歷史、文獻或歷史的關聯等作出任何陳述、保證或擔保或承擔任何責任。除非當地的法律強制要求，任何種類之任何保證，均被本段排除在外。
- (c) 請注意佳士得所提供的書面競投及電話競投服務、Christie's LIVE™、狀況報告、貨幣兌換顯示板及拍賣室錄像影像為免費服務，如有任何錯誤（人為或其它原因）、遺漏或故障或延誤、未能提供、暫停或終止，本公司不負任何責任。
- (d) 就拍賣品購買的事宜，我們僅對買方負有法律責任。
- (e) 如果儘管有 (a) 至 (d) 或 E2(i) 段的規定，我們因某些原因須對您負上法律責任，我們不須支持超過您已支付的購買款項。佳士得不須就任何利潤或經營損失、商機喪失或價值、預期存款或利息、費用、賠償或支出等原因負上任何責任。

J. 其它條款

1. 我們的撤銷權

除了本協議中的其他撤銷權利，如果我們合理地認為完成交易可能是違法行為或該銷售會令我們或賣方向任何人負上法律責任或損壞我們的名聲，我們可取消該拍賣品的拍賣。

2. 錄像

我們可以錄影及記錄拍賣過程。除非按法律要求，我們會對個人信息加以保密。該資料可能用於或提供其他佳士得集團公司和市場夥伴以作客戶分析或以便我們向買方提供合適的服務。若您不想被錄影，您可透過電話或書面競投或在 Christie's LIVE™ 競投。除非另有書面約定，您不能在拍賣現場錄像或錄音。

3. 版權

所有由佳士得或為佳士得與拍賣品有關之製作之一切圖片、插圖與書面資料（除有特別註釋外，包括我們的目錄的內容）之版權均屬於佳士得所有。沒有我們的事先書面許可不得使用以上版權作品。我們沒有保證您就投得的拍賣品會取得任何版權或其他複製的權利。

4. 效力

如本協議的任何部份遭任何法院認定為無效、不合法或無法執行，則該部分應被視為刪除，其它部分不受影響。

5. 轉讓您的權利及責任

除非我們給予書面許可，否則您不得將您在本協議下的權利或責任設立任何抵押，亦不得轉讓您的權利和責任。本協議對您的繼任人、遺產及任何承繼閣下責任的人具有約束力。

6. 翻譯

如果我們提供了本協議的翻譯件，我們將會使用英文版用於解決本協議項下產生的任何問題以及爭議。

7. 個人信息

您同意我們將持有並處理您的個人數據或信息，並將其交給其它佳士得集團公司用於我們的私隱政策所描述的，或與其相符的目

的。您可以在 www.christies.com 上找到本公司私隱政策。

8. 棄權

未能或延遲行使本業務規定下的權利或補償不應被視為免除該權利或補償，也不應阻止或限制對該權利或補償或其他權利或補償的行使。單獨或部分行使該權利或補償不應阻止或限制對其它權利或補償的行使。

9. 法律及管轄權

各方的權利及義務，就有關本業務規定，拍賣的行為及任何與上述條文的事項，均受香港法律管轄及根據香港法律解釋。在拍賣競投時，無論是親自出席或由代理人出席競投，書面、電話及其他方法競投，買方則被視為接受本業務規定，及為佳士得之利益而言，接受香港法院之排他性管轄權，並同時接納佳士得亦有權在任何其他司法管轄區提出索償，以追討買方拖欠的任何款項。

10. www.christies.com 的報告

售出的拍賣品的所有資料，包括目錄描述及價款都可在 www.christies.com 上查閱。銷售總額為成交價加上買方酬金，其不反映成本、財務費用或買方或賣方信貸申請情況。我們不能按將這些資料從 www.christies.com 網站上刪除。

K. 詞匯表

真品：以下所述的真實作品，而不是複製品或贗品：

- 拍賣品在標題被描述為某位藝術家、作者或製作者的作品**，則為該藝術家、作者或製作者的作品；
- 拍賣品在標題被描述為某時期或流派創作的作品**，則該時期或流派的作品；
- 拍賣品在標題被描述為某來源**，則為該來源的作品；

d) 以寶石為例，如**拍賣品在標題被描述為由某種材料製成**，則該作品是由該材料製成。

真品保證：我們在本協議 E 段所詳述為**拍賣品**提供的保證。

買方酬金：除了**成交價**，買方支付給我們的費用。

目錄描述：拍賣目錄內對**拍賣品**的陳述（包括於拍賣場通過對有關陳述作出的任何更改）。

佳士得集團：Christie's International Plc 及其子公司及集團的其它公司。

狀況：**拍賣品**的物理狀況。

到期付款日：如第 F1(a) 段所列出的意思。

估價：目錄中或拍賣場通告中列明的我們認為**拍賣品**可能出售的價格範圍。**低端估價**指該範圍的最低價；**高端估價**：指該範圍的最高價。**中間估值**為兩者的中間點。

成交價：拍賣官接受的**拍賣品**最高競投價。

標題：如 E2 段所列出的意思。

拍賣品：供拍賣的一件**拍賣品**（或作為一組拍賣的兩件或更多的物件）；

其他賠償：任何特殊、連帶、附帶或間接的賠償或任何符合當地法律規定的“特殊”、“附帶”或“連帶”賠償。

購買款項：如第 F1(a) 段的意思。

來源：**拍賣品**的所有權歷史。

有保留：如 E2 段中的意思；**有保留標題**則指目錄中“重要通知和目錄編制說明”頁中的“**有保留標題**”的意思。

底價：**拍賣品**不會以低於此保密底價出售。

拍賣場通告：張貼位於拍賣場內的**拍賣品**旁或 www.christies.com 的書面通知（上述通知內容會另行通知以電話或書面競投的客戶），或拍賣會舉行前或拍賣某**拍賣品**前拍賣官宣布的公告。

大階字體：指包含所有的大寫字母。

保證：陳述人或聲明人保證其所陳述或聲明的事實為正確。

SYMBOLS USED IN THIS CATALOGUE

The meaning of words coloured in **bold** in this section can be found at the end of the section of the catalogue headed 'Conditions of Sale - Buying at Christie's'

◦

Christie's has a direct financial interest in the **lot**. See Important Notices and Explanation of Cataloguing Practice.

△

Owned by Christie's or another **Christie's Group** company in whole or part. See Important Notices and Explanation of Cataloguing Practice.

◆

Christie's has a direct financial interest in the **lot** and has funded all or part of our interest with the help of someone else. See Important Notices and Explanation of Cataloguing Practice.

•

Lot offered without **reserve** which will be sold to the highest bidder regardless of the pre-sale estimate in the catalogue.

~

Lot incorporates material from endangered species which could result in export restrictions. See Section H2(b) of the Conditions of Sale - Buying at Christie's.

Ψ

Lot incorporates material from endangered species that is not for sale and is shown for display purposes only.

Please note that **lots** are marked as a convenience to you and we shall not be liable for any errors in, or failure to, mark a **lot**.

本目錄中使用的各類標識

本部份粗體字體詞語的涵義載於本目錄中題為“業務規定·買方須知”一章的最後一頁。

◦

佳士得對該**拍賣品**擁有直接經濟利益。請參閱重要通知及目錄編列方法之說明。

△

全部或部分由佳士得或其他**佳士得集團**公司持有。請參閱重要通知及目錄編列方法之說明。

◆

佳士得對該**拍賣品**擁有直接經濟利益，佳士得的全部或部分利益通過第三方融資。請參閱重要通知及目錄編列方法之說明。

•

不設**底價**的**拍賣品**，不論其在本目錄中的售前**估價**，該**拍賣品**將售賣給出價最高的競投人。

~

拍賣品含有瀕危物種的材料，可能受出口限制。請參閱業務規定·買方須知第 H2(b) 段。

Ψ

拍賣品含有瀕危物種的材料，只會作展示用途，並不作銷售。

請注意對藏品的標記僅為您提供方便，本公司不承擔任何因標示錯誤或遺漏標記的責任。

IMPORTANT NOTICES AND EXPLANATION OF CATALOGUING PRACTICE

IMPORTANT NOTICES

CHRISTIE'S INTEREST IN PROPERTY CONSIGNED FOR AUCTION

▲: Property Owned in part or in full by Christie's

From time to time, Christie's may offer a lot which it owns in whole or in part. Such property is identified in the catalogue with the symbol ▲ next to its lot number.

◦ Minimum Price Guarantees:

On occasion, Christie's has a direct financial interest in the outcome of the sale of certain lots consigned for sale. This will usually be where it has guaranteed to the Seller that whatever the outcome of the auction, the Seller will receive a minimum sale price for the work. This is known as a minimum price guarantee. Where Christie's holds such financial interest we identify such lots with the symbol ◦ next to the lot number.

◊ Third Party Guarantees/Irrevocable bids

Where Christie's has provided a Minimum Price Guarantee it is at risk of making a loss, which can be significant, if the lot fails to sell. Christie's therefore sometimes chooses to share that risk with a third party. In such cases the third party agrees prior to the auction to place an irrevocable written bid on the lot. The third party is therefore committed to bidding on the lot and, even if there are no other bids, buying the lot at the level of the written bid unless there are any higher bids. In doing so, the third party takes on all or part of the risk of the lot not being sold. If the lot is not sold, the third party may incur a loss. Lots which are subject to a third party guarantee arrangement are identified in the catalogue with the symbol ◊.

Christie's compensates the third party in exchange for accepting this risk provided that the third party is not the successful bidder. The remuneration to the third party may either be based on a fixed fee or an amount calculated against the final hammer price. The third party may also bid for the lot above the written bid. Where the third party is the successful bidder, the third party is required to pay the hammer price and the buyer's premium in full.

Third party guarantors are required by us to disclose to anyone they are advising their financial interest in any lots they are guaranteeing. However, for the avoidance of any doubt, if you are advised by or bidding through an agent on a lot identified as being subject to a third party guarantee you should always ask your agent to confirm whether or not he or she has a financial interest in relation to the lot.

Other Arrangements

Christie's may enter into other arrangements not involving bids. These include arrangements where Christie's has given the Seller an Advance on the proceeds of sale of the lot or where Christie's has shared the risk of a guarantee with a partner without the partner being required to place an irrevocable written bid or otherwise participating in the bidding on the lot. Because such arrangements are unrelated to the bidding process they are not marked with a symbol in the catalogue.

Bidding by parties with an interest

In any case where a party has a financial interest in a lot and intends to bid on it we will make a saleroom announcement to ensure that all bidders are aware of this. Such financial interests can include where beneficiaries of an Estate have reserved the right to bid on a lot consigned by the Estate or where a partner in a risk-sharing arrangement has reserved the right to bid on a lot and/or notified us of their intention to bid.

Please see <http://www.christies.com/financial-interest/> for a more detailed explanation of minimum price guarantees and third party financing arrangements.

Where Christie's has an ownership or financial interest in every lot in the catalogue, Christie's will not designate each lot with a symbol, but will state its interest in the front of the catalogue.

EXPLANATION OF CATALOGUING PRACTICE

Terms used in this catalogue have the meanings ascribed to them below. Please note that all statements in this catalogue as to Authorship are made subject to the provisions of the CONDITIONS OF SALE.

A GEORGE II SILVER CUP AND COVER
mark of Paul de Lamerie, London, 1735

In Christie's opinion either made in the workshop of the master or struck with his sponsor's mark prior to retailing and hallmarked at the London Assay Office between May 29, 1735 and May 29, 1736. The date letter has usually, but not always, changed since the early 18th century on, or around, May 29. Prior to the 18th century, the date letter changed on various dates ranging from May 8 to August 3. Since 1975, the date letter has run from January 2 to January 1 of the subsequent year.

Other countries and English, Irish and Scottish provincial offices have varying dating systems.

A GEORGE II SILVER CUP AND COVER
circa 1735

In Christie's opinion made during the specified monarch's reign and unmarked or struck with illegible marks.

A GEORGE II SILVER CUP AND COVER
bearing transposed marks for London, 1735, with the mark of Paul De Lamerie

In Christie's opinion made during the specified monarch's reign and, in all probability, in the workshop of, or sponsored by, the maker cited, but with marks transposed from a previously hallmarked object. Where applicable the catalogue will note that these transposed hallmarks have been cancelled to bring them into conformity with modern English hallmarking laws.

Please note that the ounce weights given in this catalogue are troy ounces.

重要通知及目錄編列方法之說明

重要通告

佳士得在受委託拍賣品中的權益

▲: 部分或全部歸佳士得擁有的拍賣品

佳士得可能會不時提供佳士得集團旗下公司全部或部分擁有之拍賣品。該等拍賣品在目錄中於拍賣編號旁註有 ▲ 符號以資識別。

◦ 保證最低出售價

佳士得有時就某些受委託出售的拍賣品的拍賣成果持有直接的經濟利益。通常為其向賣方保證無論拍賣的結果如何，賣方將就拍賣品的出售獲得最低出售價。這被稱為保證最低出售價。該等拍賣品在目錄中於拍賣編號旁註有 ◦ 號以資識別。

◊ 第三方保證 / 不可撤銷的競投

在佳士得已經提供最低出售價保證，如果拍賣品未能出售，佳士得將承擔遭受重大損失的風險。因此，佳士得有時選擇與第三方分擔該風險。在這種情況下，第三方同意在拍賣之前就該拍賣品提交一份不可撤銷的書面競投。第三方因此承諾競投該拍賣品，如果沒有其它競投，等三方將以書面競投價格購買該拍賣品，除非有其它更高的競價。第三方因此承擔拍賣品未能出售的所有或部分風險。如果拍賣品未能出售，第三方可能承擔損失。該等拍賣品在目錄中註以符號 ◊ 以資識別。

第三方需要承擔風險，在自身不是成功競投人的情況下，佳士得將給予酬金給第三方。第三方的酬金可以是固定金額或基於成交價計算的酬金。第三方亦可以就該拍賣品以超過書面競投的價格進行競投。如果第三方成功競投，第三方必須全額支付成交價及買方酬金。

我們要求第三方保證人向其客戶披露在給予保證的拍賣品持有的經濟利益。如果您通過顧問意見或委託代理人競投一件標示為有第三方融資的拍賣品，我們建議您應當要求您的代理人確認他 / 她是否在拍賣品持有經濟利益。

其他安排

佳士得可能訂立與競投無關的協議。這些協議包括佳士得向賣方就拍賣品銷售所得預付金額或者佳士得與第三方分擔保證風險，但並不要求第三方提供不可撤銷的書面競投或參與拍賣品的競投。因為上述協議與競投過程無關，我們不會在目錄中註以符號。

利益方的競投

如果競投人在拍賣品持有經濟利益並欲競投該拍賣品，我們將以拍賣場通知的方式知會所有競投者。該經濟利益可包括遺產受益人保留權利參與競投，遺產委託拍賣的拍賣品或者風險共擔安排下的合作方保留權利參與競投拍賣品和 / 或通知我們其競投該拍賣品的意願。

請登錄 <http://www.christies.com/financial-interest/> 瞭解更多關於最低出售價保證以及第三方融資安排的說明。

如果佳士得在目錄中每一項拍賣品中均有所有權或經濟利益，佳士得將不會於每一項拍賣品旁附註符號，但會於正文首頁聲明其權益。

目錄編列方法之說明

下列詞語於本目錄中具有以下意義。請注意本目錄中有關作者身份的所有聲明均按照《業務規定》的條款而做出。

喬治二世銀制茶杯及茶蓋

標有 Paul de Lamerie, London, 1735 標記

佳士得認為應在 1735 年 5 月 29 日至 1736 年 5 月 29 日期間在倫敦金屬化驗所 (London Assay Office) 驗證和售賣前在大師工作室中製作或刻有大師工廠的標識。自 18 世紀初期開始日期標識大概在 5 月 29 日或左右會通常，但不是必定更換。在 18 世紀以前，日期標識曾多次更換日期，為 5 月 8 日至 8 月 3 日期間的日期。自 1975 年起，該年的 1 月 2 日至次年的 1 月 1 日使用同一日期標識。其他國家如英國、愛爾蘭及蘇格蘭地區辦公室擁有不同的日期標識系統。

喬治二世銀制茶杯及茶蓋

約 1735 年製作

佳士得認為在指定君王統治時期製作但未印有標記或印有無法識別的標記。

喬治二世銀制茶杯及茶蓋

印有從別處轉移至本藏品的倫敦 1935 標記及印有 Paul De Lamerie 標記

佳士得認為在指定君王統治時期製作且很有可能由所引用的製作者或其工廠製作，但印有從一件已被驗證的物品轉移至本藏品的標記。目錄在適用的位置提示為了與當代英國金屬標記法的規定統一該標記已被取消。請注意本目錄中所示的盎司重量為金衡盎司。



MAGNIFICENT JEWELS

Hong Kong, 27 November 2018

VIEWING

23-27 November 2018

Hong Kong Convention & Exhibition Centre
No 1 Expo Drive, Wanchai, Hong Kong

CONTACT

Vickie Sek

vsek@christies.com

+852 2978 9922

"THE PEACOCK NECKLACE"

Superb Kashmir royal blue sapphire and
diamond necklace

HK\$95,000,000 - 120,000,000

US\$12,000,000 - 15,000,000

CHRISTIE'S

HISTORY OF
JEWELLERY DESIGN

1880–NOW

珠寶設計史：1880年至今



A SIX WEEK ONLINE COURSE

六週網上課程

christies.com/christies-education-online

CHRISTIE'S

EDUCATION 佳士得美術學院

DEGREE PROGRAMMES 碩士學位 • CONTINUING EDUCATION 持續進修 • ONLINE COURSES 網上課程



Property from an Important Private Collection
RARE CITRINE AND DIAMOND MYSTERY CLOCK, CARTIER,
CIRCA 1940
CHF 200.000-300.000

MAGNIFICENT JEWELS
Geneva, 13 November 2018

VIEWING
9-12 November 2018, 10am-6pm
13 November 2018, 10am-12pm

Four Seasons Hotel des Bergues
Quai des Bergues 33
1201 Geneva

CONTACT
Rahul Kadakia
rkadakia@christies.com
+41 (0)22 319 1730

CHRISTIE'S



GOLD BOXES: AN IMPORTANT PRIVATE COLLECTION

London, 5 December 2018

VIEWING

Friday 30 November, 9am-4.30pm
 Saturday 1 December, 12pm-5pm
 Sunday 2 December, 12pm-5pm
 Monday 3 December, 9am-4.30pm
 Tuesday 4 December, 9am-8pm
 Wednesday 5 December, 9am-12pm

HIGHLIGHTS ON VIEW

9-13 November 2018
 Four Seasons Hotel des Bergues
 Quai des Bergues 33
 1201 Geneva

23-25 November 2018
 Hong Kong Convention and Exhibition Centre
 No. 1 Expo Drive, Wanchai

CONTACT

David McLachlan
 dmclachlan@christies.com
 +44 (0)20 7389 2650

From left to right:

A GERMAN GOLD-MOUNTED JEWELLED
 HARDSTONE SNUFF-BOX
 PROBABLY DRESDEN/BERLIN, CIRCA 1750
 £100,000-150,000

A GERMAN GOLD-MOUNTED JEWELLED
 HARDSTONE SNUFF-BOX
 PROBABLY DRESDEN, CIRCA 1750
 £120,000-180,000

A GERMAN GOLD-MOUNTED HARDSTONE
 SNUFF-BOX
 PROBABLY DRESDEN, CIRCA 1750
 £80,000-120,000

CHRISTIE'S

GOLD BOXES

**SUNDAY 25 NOVEMBER 2018
AT 4.00 PM**

Grand Hall,
Hong Kong Convention and Exhibition Centre,
No.1 Expo Drive, Wanchai, Hong Kong

**CODE NAME: SAXONY
SALE NUMBER: 17441
LOT NUMBER: 3701-3775**

Please note that Christie's does not accept payment from third parties, including agents, and that invoice details cannot be changed after the sale.

**BID ONLINE FOR THIS SALE AT
WWW.CHRISTIES.COM**

BIDDING INCREMENTS

Bidding generally starts below the **low estimate** and increases in steps (bid increments) of up to 10 per cent. The auctioneer will decide where the bidding should start and the bid increments. Written bids that do not conform to the increments set below may be lowered to the next bidding-interval.

HK\$1,000 to HK\$2,000	by HK\$100s
HK\$2,000 to HK\$3,000	by HK\$200s
HK\$3,000 to HK\$5,000	by HK\$200, 500, 800 (ie: HK\$4,200, HK\$4,500, HK\$4,800)
HK\$5,000 to HK\$10,000	by HK\$500s
HK\$10,000 to HK\$20,000	by HK\$1,000s
HK\$20,000 to HK\$30,000	by HK\$2,000s
HK\$30,000 to HK\$50,000	by HK\$2,000, 5,000, 8,000 (ie: HK\$32,000, HK\$35,000, HK\$38,000)
HK\$50,000 to HK\$100,000	by HK\$5,000s
HK\$100,000 to HK\$200,000	by HK\$10,000s
HK\$200,000 to HK\$300,000	by HK\$20,000s
HK\$300,000 to HK\$500,000	by HK\$20,000, 50,000, 80,000 (ie: HK\$320,000, HK\$350,000, HK\$380,000)
HK\$500,000 to HK\$1,000,000	by HK\$50,000s
Above HK\$1,000,000	at auctioneer's discretion

The auctioneer may vary the increments during the course of the auction at his or her own discretion.

- I request Christie's to bid on the stated **lots** up to the maximum bid I have indicated for each **lot**.
- I understand that if my bid is successful the amount payable will be the sum of the **hammer price** and the **buyer's premium (together with any taxes chargeable on the hammer price and buyer's premium in accordance with the Conditions of Sale - Buying at Christie's)**. The **buyer's premium** rate shall be an amount equal to 25% of the **hammer price** of each **lot** up to and including HK\$ 2,000,000, 20% on any amount over HK\$ 2,000,000 up to and including HK\$ 30,000,000 and 12.5% of the amount above HK\$ 30,000,000. For wine there is a flat rate of 22.5% of the **hammer price** of each **lot** sold.
- I agree to be bound by the Conditions of Sale - Buying at Christie's printed in the catalogue.
- I understand that if Christie's receive written bids on a **lot** for identical amounts and at the auction these are the highest bids on the lot, Christie's will sell the **lot** to the bidder whose written bid it received and accepted first.
- Written bids submitted on "no **reserve**" **lots** will, in the absence of a higher bid, be executed at approximately 50% of the **low estimate** or at the amount of the bid if it is less than 50% of the **low estimate**.

I understand that Christie's written bid service is a free service provided for clients and that, while Christie's will be as careful as it reasonably can be, Christie's will not be liable for any problems with this service or loss or damage arising from circumstances beyond Christie's reasonable control.

Auction Results: +852 2760 1766.

The auctioneer will usually only accept bids for High Value Lots if a deposit has been arranged prior to the day of sale and the High Value Lot pre-registration application has been completed. High Value Lot Deposit Forms should be sent to the Bids Department by email to bidsasia@christies.com. I understand that if I have not completed the High Value Lot pre-registration before sale I will not be permitted to bid for High Value Lots.

If you are not successful in any bid and do not owe any Christie's group company any money, the deposit will be refunded to you by way of wire transfer or such other method as determined by Christie's. Please make sure that you provide your bank details in the High Value Lot Deposit Forms.

Paddle No. _____

Written Bids Form Christie's Hong Kong

**Written bids must be received at least 24 hours before the auction begins. Christie's will confirm all bids received by e-mail by return e-mail. If you have not received confirmation within one business day, please resubmit your bid(s) or contact:
Bid Department. Tel: +852 2978 9910 Email: bidsasia@christies.com**

Client Number (if applicable) _____

Client Name (please print) _____

Address _____

Contact Number (Mobile) _____

Please verify email address for post-sale communication:

Shipping Quote Required

Shipping address (Same as the above address):

Please tick if you prefer not to receive information about our upcoming sales by e-mail

I HAVE READ AND UNDERSTOOD THIS WRITTEN BID FORM AND THE CONDITIONS OF SALE - BUYING AT CHRISTIE'S

Signature _____ Date _____

If you have not previously bid or consigned with Christie's, please attach copies of the following documents. **Individuals:** government-issued photo identification (such as a photo driving licence, national identity card, or passport) and, if not shown on the ID document, proof of current address, for example a utility bill or bank statement. **Corporate clients:** certificate of incorporation, proof of company address, photo ID copy of the authorized bidder, letter of authorization duly signed by the director or the legal representative and, where applicable, chopped with company stamp and official document listing directors and shareholders. **Other business structures such as trusts, offshore companies or partnerships:** please contact the Credit Department at + 852 2978 6870 for advice on the information you should supply. If you are registering to bid on behalf of someone who has not previously bid or consigned with Christie's, please attach identification documents for yourself as well as the party on whose behalf you are bidding, together with a signed letter of authorisation from that party.

New clients, clients who have not made a purchase from any Christie's office within the last 12 months, and those wishing to spend more than on previous occasions will be asked to supply a bank reference and/or a recent bank statement and we may also require a deposit as we deem appropriate as a condition of allowing you to bid. If you are asked to provide a deposit, it may be made by calling at +852 2978 5371. Your bidder registration will not be considered complete until we receive payment of the deposit in full and cleared funds.

PLEASE PRINT CLEARLY

Lot number (in numerical order)	Maximum Bid HK\$ (excluding buyer's premium)	Lot number (in numerical order)	Maximum Bid HK\$ (excluding buyer's premium)

二〇一八年 十一月二十五日
星期日 下午四時正

香港灣仔博覽道 1 號
香港會議展覽中心大會堂

編號名稱：**SAXONY**
拍賣編號：**17441**
拍賣品編號：**3701-3775**

佳士得不接受包括代理人在內之第三方支付款；付款資料於拍賣會完結後將不能更改。

參與網絡競投可登入佳士得網站 www.christies.com

競投價遞增幅度

競投一般由低於**低價估價**開始，通常每次減價之遞增幅度（競投價遞增幅度）最高為 10%，拍賣官會自行決定競投開始價位及遞增幅度。書面競投價若與下列之遞增幅度不一致，將被調低至下一個減價金額：

競投價	每次減價之遞增金額
1,000-2,000 港元	100 港元
2,000-3,000 港元	200 港元
3,000-5,000 港元	200, 500, 800 港元 (例 4,200, 4,500, 4,800 港元)
5,000-10,000 港元	500 港元
10,000-20,000 港元	1,000 港元
20,000-30,000 港元	2,000 港元
30,000-50,000 港元	2,000, 5,000, 8,000 港元 (例 32,000, 35,000, 38,000 港元)
50,000-100,000 港元	5,000 港元
100,000-200,000 港元	10,000 港元
200,000-300,000 港元	20,000 港元
300,000-500,000 港元	20,000, 50,000, 80,000 港元 (例 320,000, 350,000, 380,000 港元)
500,000-1,000,000 港元	50,000 港元
1,000,000 港元或以上	拍賣官自行決定

在拍賣時拍賣官可酌情更改每次增加之額度。

- 茲請求佳士得就本表格所列的**拍賣品**進行競投，直至本表格所列的最高出價。
- 本人知悉如競投成功，本人應付之購買款項為**成交價及買方酬金（以及所有基於成交價和買方酬金而產生的稅費，及符合業務規定，買方須知）**。**買方酬金**費率按每件**拍賣品**成交價首港幣 2,000,000 元之 25%，加逾港幣 2,000,000 元以上至 30,000,000 元部份之 20%；加逾港幣 30,000,000 元以上之 12.5% 計算。名酒的**買方酬金**是按每件**拍賣品**成交價之 22.5%。
- 本人同意接受本目錄中所列之業務規定的管限。
- 本人理解如佳士得收到多個競投價相等的書面競投，而在拍賣時此等競投價乃該**拍賣品**之最高出價，則該**拍賣品**售給最先達其書面競投書給本公司之競投人。
- 如果您以書面競投一件**“沒有底價”**的**拍賣品**，而且沒有其他更高叫價，我們會為您以**低價估價**的 50% 進行競投；如果您的投標價低於**低價估價**的 50%，則以您的投標價進行競投。

本人亦明白，佳士得的書面競投服務為一項向客戶提供的免費服務，佳士得會合理謹慎進行，佳士得不會就任何在佳士得控制的範圍以外產生的損失或賠償負責。

拍賣結果查詢：+852 2760 1766.

拍賣官一般僅接受已於拍賣日前繳付保證金並已完成高額拍賣品預先登記人士之高額拍賣品競投。請將已填妥之高額拍賣品之登記表格電郵 bridsasia@christies.com 至投標部。本人知悉若本人未於拍賣前完成高額拍賣預先登記，本人將不獲准競投高額拍賣品。

若閣下未能成功競投任何**拍賣品**，對佳士得或佳士得集團其他公司亦無任何欠款，保證金將以電匯方式或佳士得決定之其他方式退還閣下。請確保閣下已提供有關之銀行資料詳情。

書面競投表格

香港佳士得

書面競投必須在拍賣開始前至少 24 小時收到。

佳士得公司將以電郵確認收到閣下電郵之書面競投表格。如您在一個工作日內未能收到確認，請重新遞交書面競投表格或聯繫投標部。

電話：+852 2978 9910 電郵：bridsasia@christies.com

客戶編號（若適用）_____

客戶名稱（請用正楷填寫）_____

地址 _____

聯絡電話（手提電話）_____

請確認電郵地址以作售後服務用途：

請提供運費報價

運送地址（ 同上述地址相同）：

如閣下不希望透過電郵接收本公司將舉行的拍賣、活動或其他由佳士得集團及其聯營公司提供的服務資料，請於方格內劃上「✓」號。

我本人已細閱並理解本書面競投表格及業務規定，買方須知。

簽名 _____ 日期 _____

如閣下未曾於佳士得競投或託售**拍賣品**，請附上以下文件之副本。**個人**：政府發出附有相片的身分證明文件（如國民身份證或護照），及（如身分證明文件未有顯示現時住址）現時住址證明，如公用事業帳單或銀行月結單。**公司客戶**：公司註冊證書、公司地址證明、被授權競投者附有相片的身分證明文件，由公司董事或法人按公司規定簽署及（若有）蓋有公司章的競投授權書，以及列出所有董事及股東的公司文件。**其他業務結構，如信託機構、離岸公司或合夥公司**：請與信用部聯絡，以諮詢閣下須提供何種資料，電話為 +852 2978 6870。如閣下登記代表未曾於佳士得競投或託售**拍賣品**人士競投，請附上閣下本人的身分證明文件，以及閣下所代表競投人士的身分證明文件，連同該人士簽署的授權書。

新客戶、過去十二個月內未有在佳士得投得**拍賣品**，及本次擬出價金額高於過往之客戶，須提供銀行信用證明及／或近期的銀行月結單，亦或須繳付本公司指定的有關保證金作為允許閣下競投的先決條件。如閣下被要求提供保證金，閣下可致電 +852 2978 5371 安排付款。閣下的競投申請會在我們收到保證金的全額付款後方可作實。

請用正楷填寫清楚

拍賣品編號 (按數字排序)	最高競投價 (港幣) (買方酬金不計在內)	拍賣品編號 (按數字排序)	最高競投價 (港幣) (買方酬金不計在內)



BIDDER REGISTRATION FORM

Paddle No.

We encourage new clients to register at least 48 hours in advance of a sale to allow sufficient time to process the registration.

Please complete and sign this form and send it to us by email registrationasia@christies.com.

A Bidder's Detail

The name and address given above will appear on the invoice for lots purchased with your assigned paddle for this registration. Please check that the details are correct as the invoice cannot be changed after the sale.

Account Name Account No.

Address

..... Post/Zip Code

Phone No.

Please verify email address for post-sale communication

Shipping Quote Required.

Shipping Address (Same as the above address):

.....

B Identity Documents and Financial References

If you are a new client, please provide copies of the following documents. **Individuals:** government-issued photo identification (such as a national identity card or passport) and, if not shown on the ID document, proof of current address, for example a utility bill or bank statement. **Corporate clients:** a certificate of incorporation, proof of company address, photo ID copy of the authorized bidder, letter of authorization duly signed by the director or the legal representative and, where applicable, chopped with company stamp and official document listing directors and shareholders. **Other business structures such as trusts, offshore companies or partnerships:** please contact the Credit Department at +852 2978 6870 for advice on the information you should supply.

If you are registering to bid on behalf of someone who has not previously bid or consigned with Christie's, please attach identification documents for yourself as well as the person on whose behalf you are bidding, together with a signed letter of authorisation from the person.

New clients, clients who have not made a purchase from any Christie's office within the last 12 months, and those wishing to spend more than on previous occasions will be asked to supply a bank reference and/or a recent bank statement and we may also require a deposit as we deem appropriate as a condition of allowing you to bid. Deposit can be paid by using any of the following methods: credit card(s) acceptable to Christie's; wire transfer; cashier order or cheque. We cannot accept payment from third parties and agents. If you are asked to provide a deposit, it may be made by calling at +852 2978 5371. Your bidder registration will not be considered complete until we receive payment of the deposit in full and cleared funds.

To apply for a high value lot ("HVL") paddle, you will need to pay a HVL deposit, which we will calculate for you. Generally it will be the higher of: (i) HK\$ 1,600,000 or (ii) 20 % of the aggregate low estimates of the HVLs you intend to bid on; or (iii) such other amount as we may determine from time to time. The HVL registration procedure applies even if you have already registered to bid in our sales on other lots. We reserve the right to change our HVL registration procedure and requirements from time to time without notice.

C Sale Registration

- | | |
|---|--|
| <input type="checkbox"/> 16127 Fine & Rare Wines | <input type="checkbox"/> 15956 Chinese Contemporary Ink |
| <input type="checkbox"/> 16129 Important Watches | <input type="checkbox"/> 15957 Fine Chinese Classical Paintings and Calligraphy * |
| <input type="checkbox"/> 16131 Hong Kong Magnificent Jewels * | <input type="checkbox"/> 15958 Fine Chinese Modern Paintings * |
| <input type="checkbox"/> 16133 Handbags & Accessories | <input type="checkbox"/> 17461 Beyond Compare: A Thousand Years of the Literati Aesthetic (Evening Sale) * |
| <input type="checkbox"/> 13278 Asian 20th Century & Contemporary Art (Evening Sale) * | <input type="checkbox"/> 17418 The Meiji Aesthetic:
Selected Masterpieces from a Private Asian Collection |
| <input type="checkbox"/> 13280 Asian Contemporary Art (Day Sale) | <input type="checkbox"/> 16264 Chinese Archaic Jades From The Yangdetang Collection PART II |
| <input type="checkbox"/> 13279 Asian 20th Century Art (Day Sale)
Including a Selection of Japanese Woodblock Prints from Private Collections | <input type="checkbox"/> 16266 Multifarious Colours - Three Enamelled Qianlong Masterpieces * |
| <input type="checkbox"/> 17441 Gold Boxes | <input type="checkbox"/> 15961 Important Chinese Ceramics and Works of Art * |

* If you intend to bid on: (i) any lot in the Asian 20th Century & Contemporary Art Evening Sale; or (ii) a lot the low estimate of which is HK\$ 8 million or above, i.e. a high value lot ("HVL"), please tick the box below.

I wish to apply for a HVL paddle.

If you intend to bid on the "Wood & Rock" by Su Shi, please tick the box below.

I wish to apply for a HVL paddle designated for the "Wood & Rock".

Please indicate the bidding level you require:

- | | | |
|--|---|--|
| <input type="checkbox"/> HK \$ 0 - 500,000 | <input type="checkbox"/> HK \$ 500,001 - 2,000,000 | <input type="checkbox"/> HK \$ 2,000,001 - 4,000,000 |
| <input type="checkbox"/> HK \$ 4,000,001 - 8,000,000 | <input type="checkbox"/> HK \$ 8,000,001 - 20,000,000 | <input type="checkbox"/> HK \$ 20,000,000 + |

D Declarations

- I have read the "Conditions of Sale - Buying at Christie's" and "Important Notices and Explanation of Cataloguing Practice" printed in the sale catalogue, as well as the "No Third Party Payment Notice" and agree to be bound by them.
- I have read the data collection section of the conditions of sale printed in the sale catalogue and agree to be bound by its terms.
- I understand that if I have not completed the high value lot pre-registration before the auction Christie's may refuse my bid for high value lots.
- If you are not successful in any bid and do not owe any Christie's group company any money, the deposit will be refunded to you by way of wire transfer or such other method as determined by Christie's. please make sure that you provide your bank details to us.

Please tick if you are a new client and would like to receive information about sales, events and other services offered by the Christie's group and its affiliates by e-mail. You can opt-out of receiving this information at any time.

Name Signature Date

Christie's Hong Kong Limited

22nd Floor Alexandra House, 18 Chater Road, Central, Hong Kong Tel: +852 2760 1766
www.christies.com

建議新客戶於拍賣舉行前至少 48 小時辦理登記，以便有充足時間處理登記手續。

請填妥並簽署本表格然後電郵至 registrationasia@christies.com。

A 投標者資料

客戶名稱及地址會列印在附有是次登記之競投牌編號的發票上；付款資料於拍賣會完結後將不能更改，請確定以上資料確實無誤

客戶名稱 客戶編號

客戶地址

..... 郵區編號

電話號碼

請確認電郵地址以作售後服務用途

請提供運費報價。

運送地址（ 同上述地址相同）：

B 身份證明文件及財務證明

如閣下為新客戶，請提供以下文件之副本。**個人**：政府發出附有相片之身份證明文件（如國民身份證或護照），及（如身份證明文件未有顯示現時住址）現時住址證明，如公用事業帳單或銀行月結單。**公司客戶**：公司註冊證書、公司地址證明、被授權競投者附有相片之身份證明文件，由公司董事或法人按公司規定簽署及（若有）蓋有公司章的競投授權書，以及列出所有董事及股東的公司文件。**其他業務結構，如信託機構、離岸公司或合夥公司**：請與信用部聯絡，以諮詢閣下須提供何種資料，電話為 +852 2978 6870。

如閣下登記代表未曾於佳士得競投或託售拍賣品人士競投，請附上閣下本人的身份證明文件，以及閣下所代表競投人士的身份證明文件，連同該人士簽發的授權書。

新客戶、過去十二個月內未有在佳士得投得拍賣品，及本次擬出價金額高於過往之客戶，須提供銀行信用證明及／或近期的銀行月結單，亦或須繳付本公司指定的有關保證金作為允許閣下競投的先決條件。閣下可以佳士得接受之信用卡、電匯、本票或支票繳付保證金。請注意佳士得概不接受第三方或代理人代付之款項。如閣下被要求提供保證金，閣下可致電 +852 2978 5371 安排付款。閣下的競投申請會在我們收到保證金的全額付款後方可作實。

如閣下申請高額拍品競投號碼牌，閣下需繳付適用於高額拍品的保證金——一般為 (i) 港幣 1,600,000 元；或 (ii) 閣下擬競投的全部拍賣品低估價總額之 20%；或 (iii) 其他我們不時設定的金額（以較高者為準）。即使閣下已於佳士得其他拍賣登記，閣下仍需為高額拍品按高額拍品登記程序進行登記。佳士得保留不時更改高額拍品登記程序及要求的權利而不作另行通知。

C 拍賣項目登記

- | | |
|---|---|
| <input type="checkbox"/> 16127 佳士得名釀 | <input type="checkbox"/> 15956 中國當代水墨 |
| <input type="checkbox"/> 16129 精緻名錶 | <input type="checkbox"/> 15957 中國古代書畫* |
| <input type="checkbox"/> 16131 瑰麗珠寶及翡翠首飾* | <input type="checkbox"/> 15958 中國近現代畫* |
| <input type="checkbox"/> 16133 典雅傳承：手袋及配飾 | <input type="checkbox"/> 17461 不凡——宋代美學一千年（晚間拍賣）* |
| <input type="checkbox"/> 13278 亞洲二十世紀及當代藝術（晚間拍賣）* | <input type="checkbox"/> 17418 明心匠治：亞洲私人收藏明治時代精品 |
| <input type="checkbox"/> 13280 亞洲當代藝術（日間拍賣） | <input type="checkbox"/> 16264 養德堂珍藏中國古玉器（二） |
| <input type="checkbox"/> 13279 亞洲二十世紀藝術（日間拍賣）包括日本木刻版畫私人珍藏 | <input type="checkbox"/> 16266 繁華似錦——乾隆彩瓷三絕* |
| <input type="checkbox"/> 17441 金盃 | <input type="checkbox"/> 15961 重要中國瓷器及工藝精品* |

*如閣下有意競投 (i) 佳士得亞洲二十世紀及當代藝術晚間拍賣之任何拍賣品；或 (ii) 其他類別拍賣低估價為港幣 8,000,000 元或以上的拍賣品，即高額拍品，請於以下方格劃上「✓」號。

本人有意登記高額拍品競投牌。

如閣下有意競投蘇軾之木石圖，請於以下方格劃上「✓」號。

本人有意登記有關木石圖的高額拍品競投牌。

請提供閣下之競投總額：

- | | | |
|---|--|---|
| <input type="checkbox"/> 港幣 0 - 500,000 | <input type="checkbox"/> 港幣 500,001 - 2,000,000 | <input type="checkbox"/> 港幣 2,000,001 - 4,000,000 |
| <input type="checkbox"/> 港幣 4,000,001 - 8,000,000 | <input type="checkbox"/> 港幣 8,000,001 - 20,000,000 | <input type="checkbox"/> 港幣 20,000,000 + |

D 聲明

- 本人已細閱載於目錄內之末的業務規定、買家須知、重要通告及目錄編列方法之說明及不接受第三方支付款通告，並同意遵守所有規定。
- 本人已細閱載於目錄內業務規定之資料搜集條款，並同意遵守該規定。
- 本人知悉若本人未於拍賣前完成高額拍賣預先登記，佳士得將有權不接受任何高額拍品之競投。
- 若閣下未能成功競投任何拍賣品，對佳士得或佳士得公司集團亦無任何欠款，保證金將以電匯方式或佳士得決定之其他方式退還閣下。請確保閣下已提供有關之銀行資料詳情。
- 如閣下為新客戶並希望透過電郵接收本公司將舉行的拍賣、活動或其他由佳士得集團及其聯營公司提供的服務資料，請於方格內劃上「✓」號。閣下可隨時選擇拒收此訊息。

姓名 簽署 日期



CHRISTIE'S

CHRISTIE'S INTERNATIONAL PLC

François Pinault, Chairman
Guillaume Cerutti, Chief Executive Officer
Stephen Brooks, Deputy Chief Executive Officer
Jussi Pylkkänen, Global President
François Curiel, Chairman, Europe & Asia
Jean-François Palus
Stéphanie Renault
Héloïse Temple-Boyer
Sophie Carter, Company Secretary

INTERNATIONAL CHAIRMEN

Stephen Lash, Chairman, Emeritus, Americas
The Earl of Snowdon, Honorary Chairman, EMERI
Charles Cator, Deputy Chairman, Christie's Int.

CHRISTIE'S ASIA

François Curiel, Chairman
Rebecca Wei, President

CHAIRMAN'S OFFICE

Jonathan Stone, Chairman, Asian Art
Eric Chang, Deputy Chairman
Ben Clark, Deputy Chairman
Ben Kong, Deputy Chairman
Vickie Sek, Deputy Chairwoman

CHRISTIE'S ADVISORY COUNCIL, ASIA

Rebecca Wei, Chairwoman
Jinqing Cai, Deputy Chairwoman
Pierre Chen, Raymond Ch'ien, William Fung,
Qiong Er Jiang, Handel Lee, Anthony Lin,
Mary Ma, Pan Gong Kai, Dee Poon,
Mimi Tang, Patrick Thomas, Wang Wei,
Douglas Woo

SENIOR VICE PRESIDENTS

Pola Antebi, Karen Au Yeung, Lavina Chan,
YF Cheung, Elaine Holt, Kitty Mak,
Ada Ong, Julien Pradels, Audrey Shum,
Simon Tam, Chi Fan Tsang, Katsura Yamaguchi

VICE PRESIDENTS

Carmen Shek Cerne, Joyce Chan, Janet Chang,
Liang-Lin Chen, Blanca Cheng, Fung Chiang,
Jennie Chu, Isabel Coutier, Charmie Hamami,
Dexter How, Julia Hu, Marcello Kwan,
Elaine Kwok, Stephenie Leung, Ruben Lien,
Gabrielle Mak, Sara Mao, Lillian Ng,
Jasmin Ngai, Gen Ogo, Jessie Or,
Terence Poon, Alexandra Reid, Bo Tan,
Francis Tsang, Lihua Tung, Nicole Wright,
Alan Yip, Kim Yu, Dina Zhang,
Grace Zhuang

ASSOCIATE VICE PRESIDENTS

Lee Bingle, Jeff Chan, Selina Chan,
Winifred Chan, Kelly Chang, Lesley Chen,
Amy Cheng, Joanne Cheng, Isaac Choi,
Terry Choi, Yanie Choi, Betsy Chow,
Dai Dai, Helen Fung, Phylbie Ho,
Yunah Jung, Joyce Lee, Keyvyn Leung,
Nelly Li, Rachel Li, Georgina Liu,
Vicky Liu, Yu-Shan Lu, Benson Or,
Felix Pei, Zhongwei Qin, Sheresee Tong,
Mandy Wang, Michael Xie, Maxwell Yao,
Harriet Yu, Michelle Zhang

05/10/18

HONG KONG AUCTION CALENDAR

FINE & RARE WINES

Sale number: 16127
SATURDAY 24 NOVEMBER
10.00 AM

ASIAN 20TH CENTURY & CONTEMPORARY ART (EVENING SALE)

Sale number: 13278
SATURDAY 24 NOVEMBER
6.00 PM
Viewing: 23-24 November

ASIAN CONTEMPORARY ART (DAY SALE)

Sale number: 13280
SUNDAY 25 NOVEMBER
10.30 AM
Viewing: 23-24 November

ASIAN 20TH CENTURY ART (DAY SALE) INCLUDING A SELECTION OF JAPANESE WOODBLOCK PRINTS FROM PRIVATE COLLECTIONS

Sale number: 13279
SUNDAY 25 NOVEMBER
1.30 PM
Viewing: 23-24 November

GOLD BOXES

Sale number: 17441
SUNDAY 25 NOVEMBER
4.00 PM
Viewing: 23-25 November

CHINESE CONTEMPORARY INK

Sale number: 15956
MONDAY 26 NOVEMBER
11.00 AM
Viewing: 23-25 November

IMPORTANT WATCHES

Sale number: 16129
MONDAY 26 NOVEMBER
12.00 PM
Viewing: 23-25 November

FINE CHINESE MODERN PAINTINGS

Sale number: 15958
MONDAY 26 NOVEMBER
2.30 PM
TUESDAY 27 NOVEMBER
2.30 PM
Viewing: 23-26 November

BEYOND COMPARE: A THOUSAND YEARS OF THE LITERATI AESTHETIC (EVENING SALE)

Sale number: 17461
MONDAY 26 NOVEMBER
7.00 PM
Viewing: 23-26 November

THE MEIJI AESTHETIC: SELECTED MASTERPIECES FROM A PRIVATE ASIAN COLLECTION

Sale number: 17418
TUESDAY 27 NOVEMBER
10.00 AM
Viewing: 23-26 November

FINE CHINESE CLASSICAL PAINTINGS AND CALLIGRAPHY

Sale number: 15957
TUESDAY 27 NOVEMBER
10.30 AM
Viewing: 23-26 November

HONG KONG MAGNIFICENT JEWELS

Sale number: 16131
TUESDAY 27 NOVEMBER
1.00 PM
Viewing: 23-27 November

CHINESE ARCHAIC JADES FROM THE YANGDETANG COLLECTION PART II

Sale number: 16264
WEDNESDAY 28 NOVEMBER
10.30 AM
Viewing: 23-27 November

HANDBAGS & ACCESSORIES

Sale number: 16133
WEDNESDAY 28 NOVEMBER
11.00 AM
Viewing: 23-27 November

MULTIFARIOUS COLOURS - THREE ENAMELLED QIANLONG MASTERPIECES

Sale number: 16266
WEDNESDAY 28 NOVEMBER
2.30 PM
Viewing: 23-27 November

IMPORTANT CHINESE CERAMICS AND WORKS OF ART

Sale number: 15961
WEDNESDAY 28 NOVEMBER
2.30 PM
Viewing: 23-27 November

All dates are subject to change, please phone +852 2760 1766 for confirmation

Catalogue photo credits: Jon Stokes





CHRISTIE'S 佳士得

22ND FLOOR ALEXANDRA HOUSE 18 CHATER ROAD CENTRAL HONG KONG
香港 中環 遮打道18號 歷山大廈22樓